

# Largo

from Lute Concerto in D

Antonio Vivaldi

1

$\text{♩} = 125$

This system contains measures 1 through 5. The treble clef staff features a series of eighth notes, with some notes highlighted in purple and others in green. The bass clef staff provides a harmonic accompaniment with chords, some of which are highlighted in blue. The time signature is 4/4.

6

This system contains measures 6 through 10. The treble clef staff continues the melodic line with eighth notes and a half note. The bass clef staff has chords and a whole rest in measure 8. The time signature is 4/4.

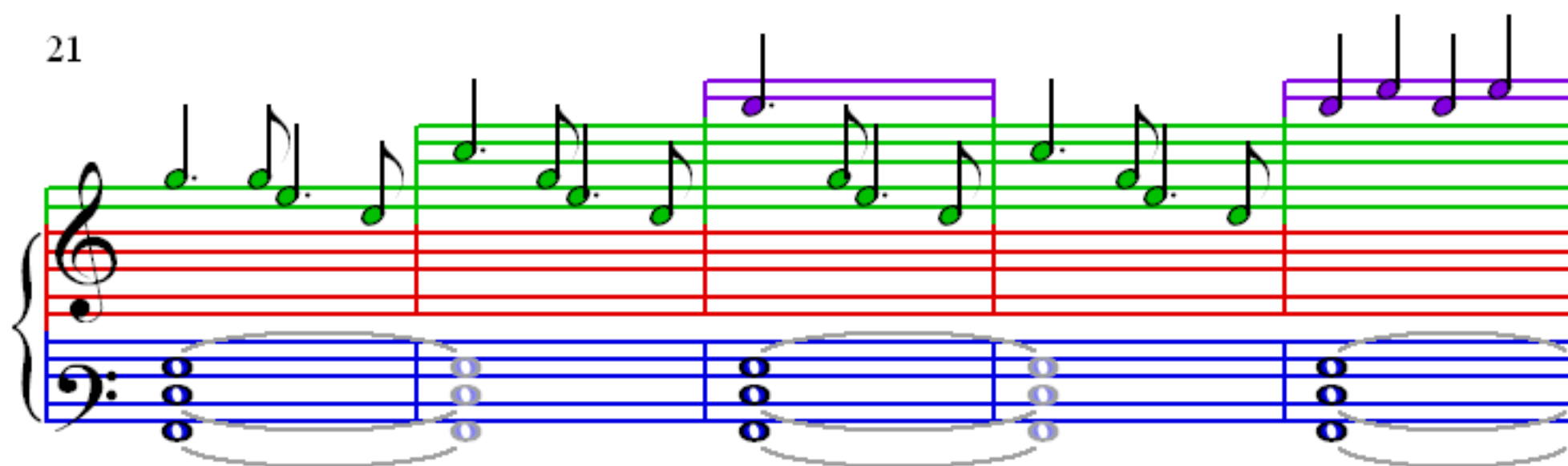
11

This system contains measures 11 through 15. The treble clef staff features a sequence of eighth notes, with some notes highlighted in purple and others in green. The bass clef staff has chords, with some notes highlighted in orange. The time signature is 4/4.

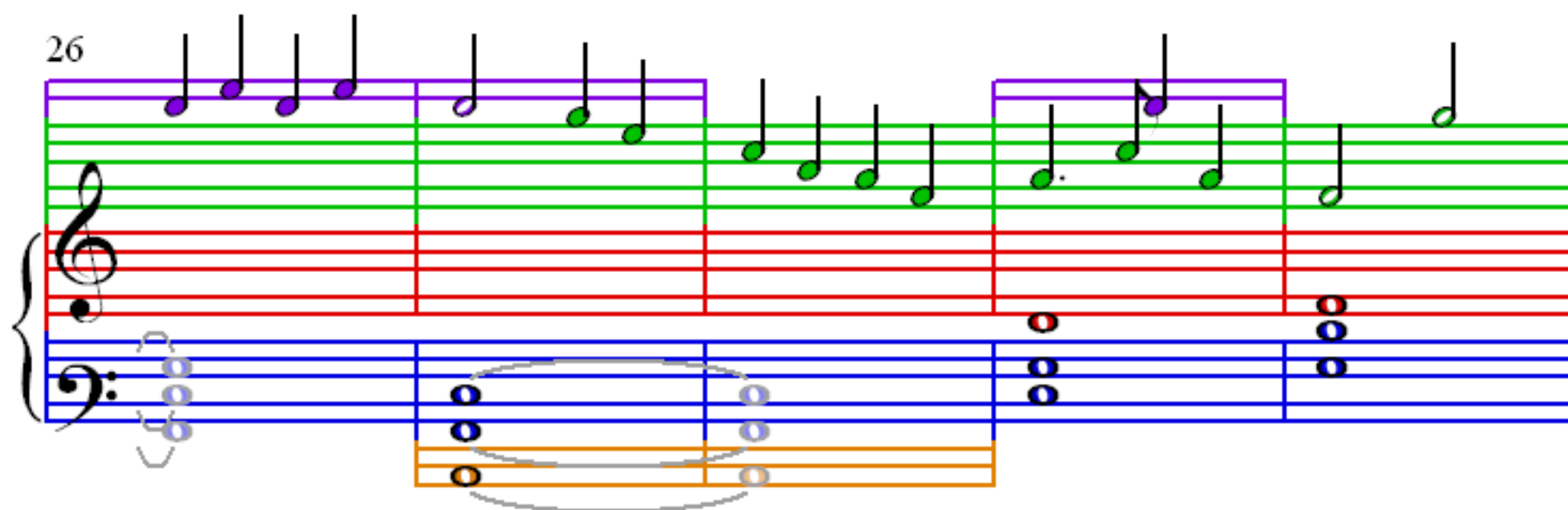
16

This system contains measures 16 through 20. The treble clef staff continues the melodic line with eighth notes. The bass clef staff has chords, with some notes highlighted in orange. The time signature is 4/4.

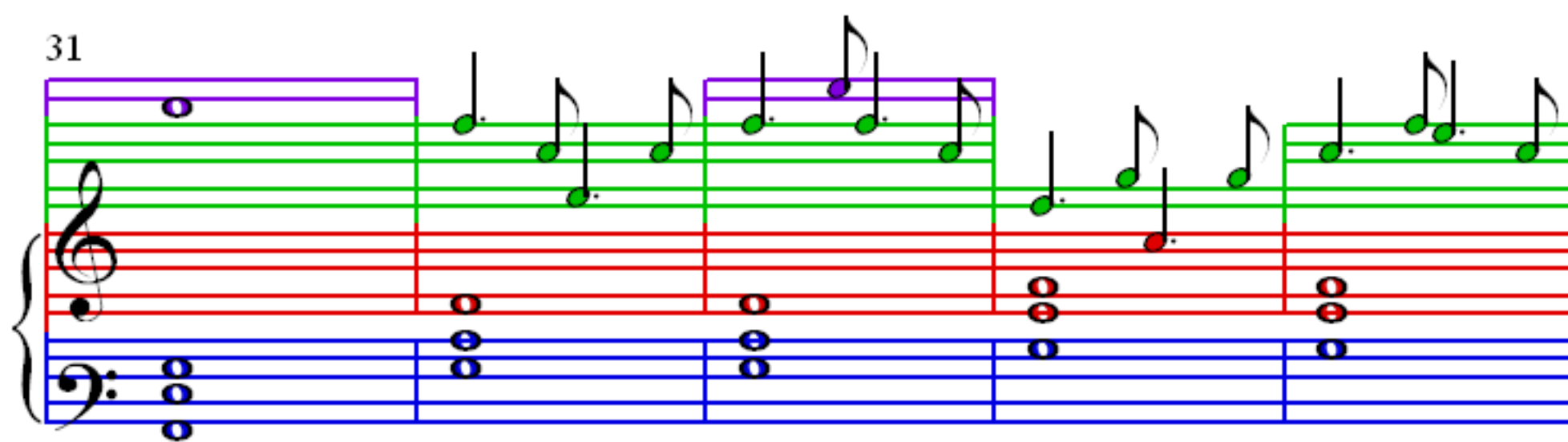
21



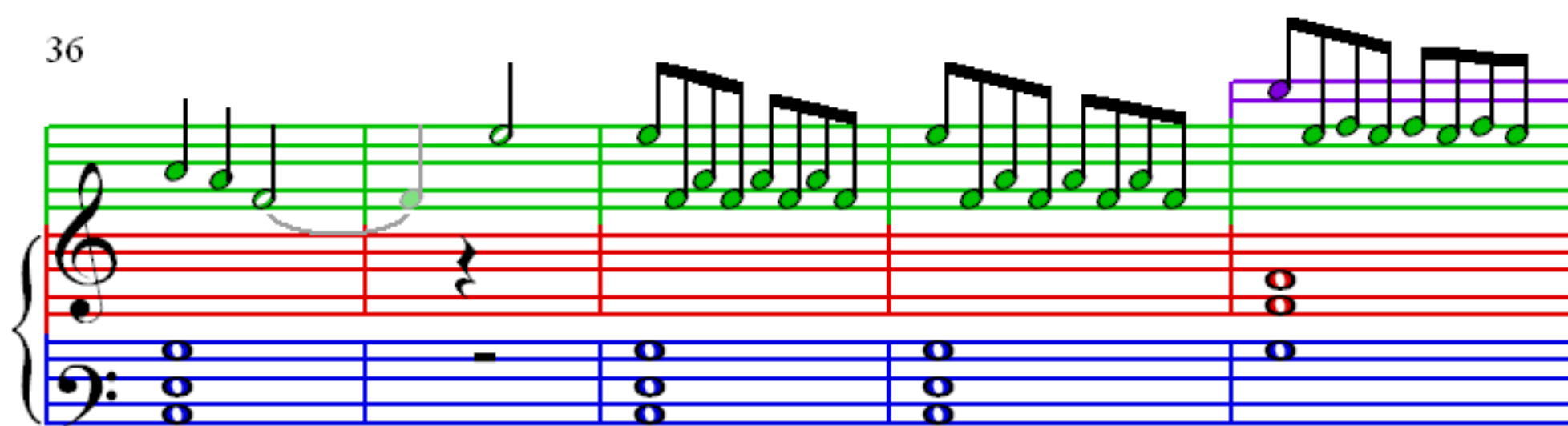
26



31



36



41

System 1 (Measures 41-46): Treble clef features a melodic line with green and purple notes, including beamed sixteenth notes. Bass clef provides a simple harmonic accompaniment with blue and orange notes. A bracket highlights measures 43-44 in the bass.

47

System 2 (Measures 47-53): Treble clef continues the melodic line. Bass clef has a steady accompaniment. A bracket highlights measures 50-51 in the bass.

54

System 3 (Measures 54-59): Treble clef has a more active melodic line. Bass clef has a steady accompaniment. A bracket highlights measures 56-57 in the bass.

61

System 4 (Measures 61-66): Treble clef features a melodic line with green and purple notes. Bass clef has a steady accompaniment. A bracket highlights measures 63-64 in the bass.