

Humoresque Op.101-7

Dvorak

$\text{♩} = 100$

The image displays a musical score for the piece "Humoresque Op. 101-7" by Antonín Dvořák. The score is written for piano (p) and violin. The tempo is marked as $\text{♩} = 100$. The key signature is one flat (B-flat major or D minor), and the time signature is 2/4. The score is divided into three systems, each with a piano part on the left and a violin part on the right. The piano part is written in treble and bass staves, while the violin part is written in a single staff. The piano part includes fingerings (1-5) and slurs. The violin part includes fingerings (1-5) and slurs. The score is color-coded: the piano part is in blue, the violin part is in red, and the bass staff of the piano part is in orange. The first system shows the piano part starting with a half note G2, followed by a quarter note A2, and then a half note Bb2. The violin part starts with a half note G4, followed by a quarter note A4, and then a half note Bb4. The second system shows the piano part with a half note C3, followed by a quarter note D3, and then a half note E3. The violin part starts with a half note C5, followed by a quarter note D5, and then a half note E5. The third system shows the piano part with a half note F3, followed by a quarter note G3, and then a half note A3. The violin part starts with a half note F5, followed by a quarter note G5, and then a half note A5.

7

1 2 5 2 3 5 1

4 1

1 5 3 4 2 3 1

10

5 3 3 1 4 2 3 1

4 2 3 1 5 2 5 1 4 1 2

5 3 4 2 2 3

p

13

1 5 3

5 3 3 1 3 2

4 2 3 1 5 3 3 1

16

3 5 1 4
1 2 1 1

18

20

32

3 1 5 2

p

34

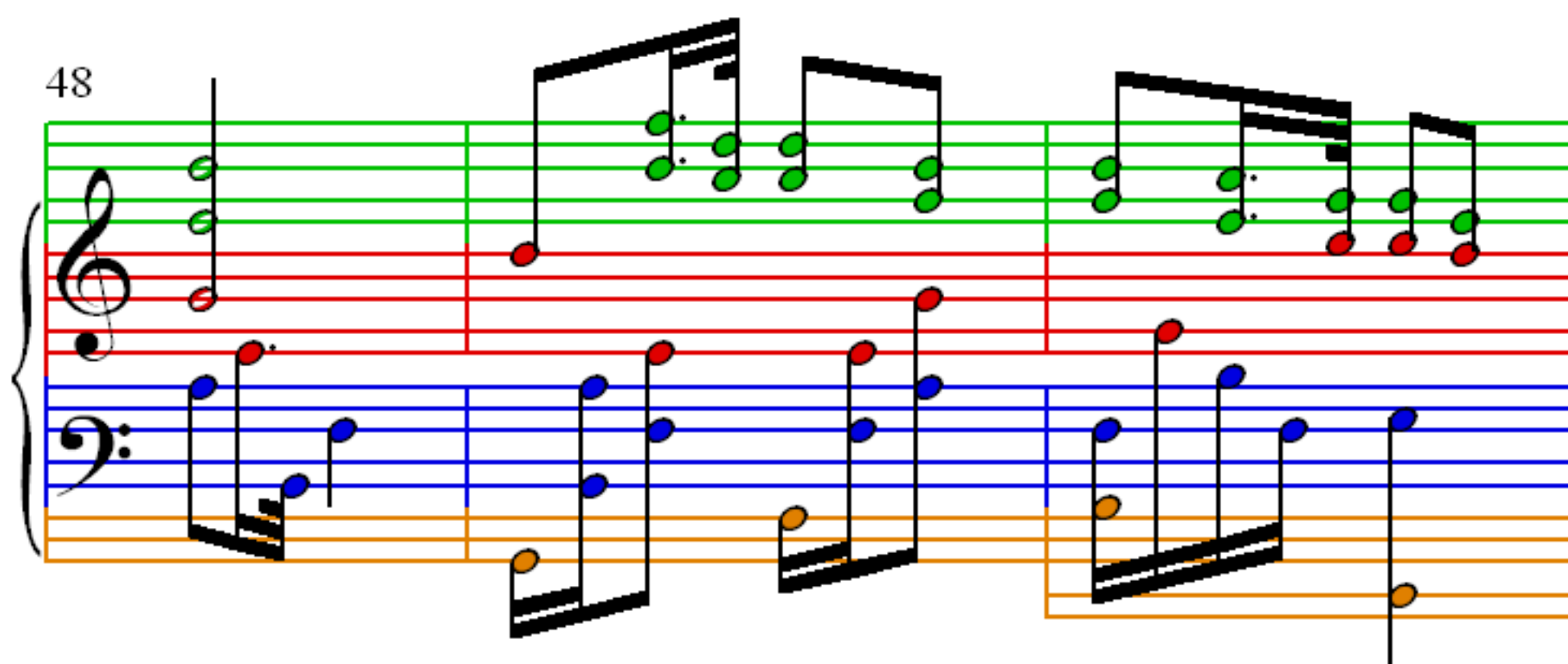
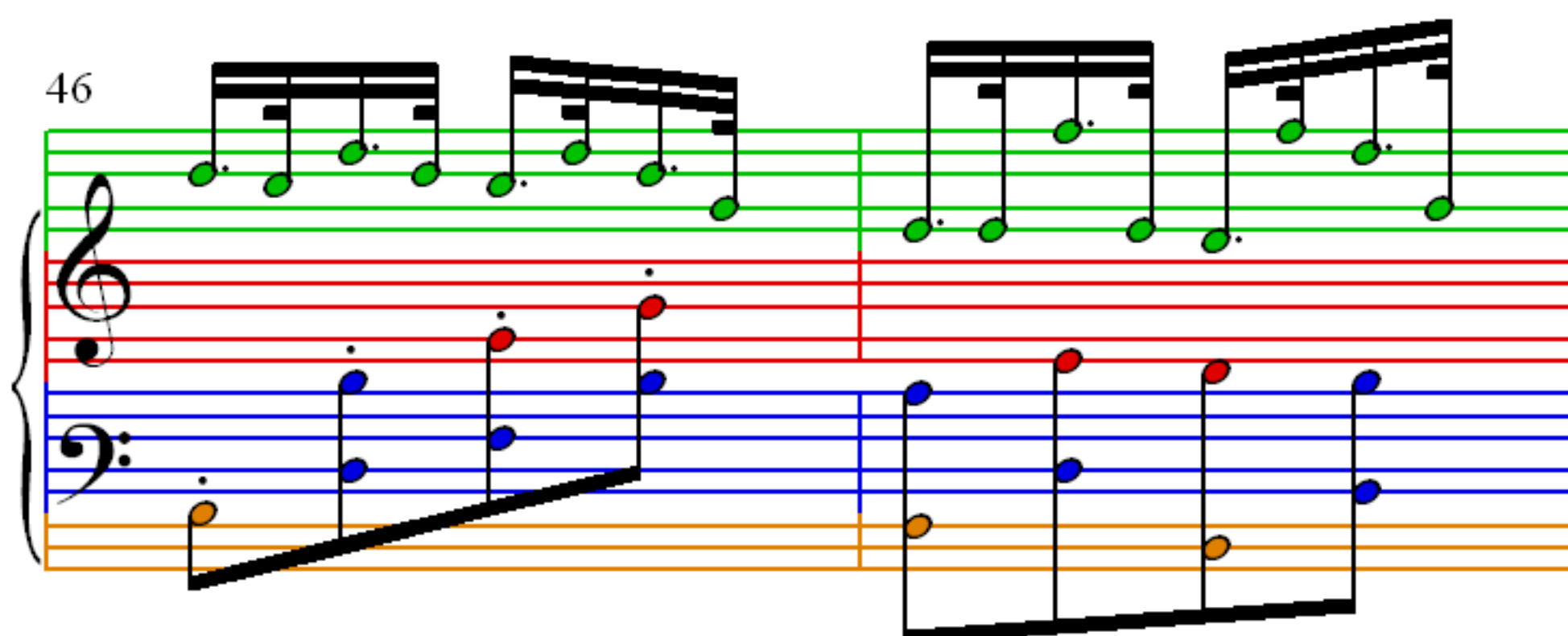
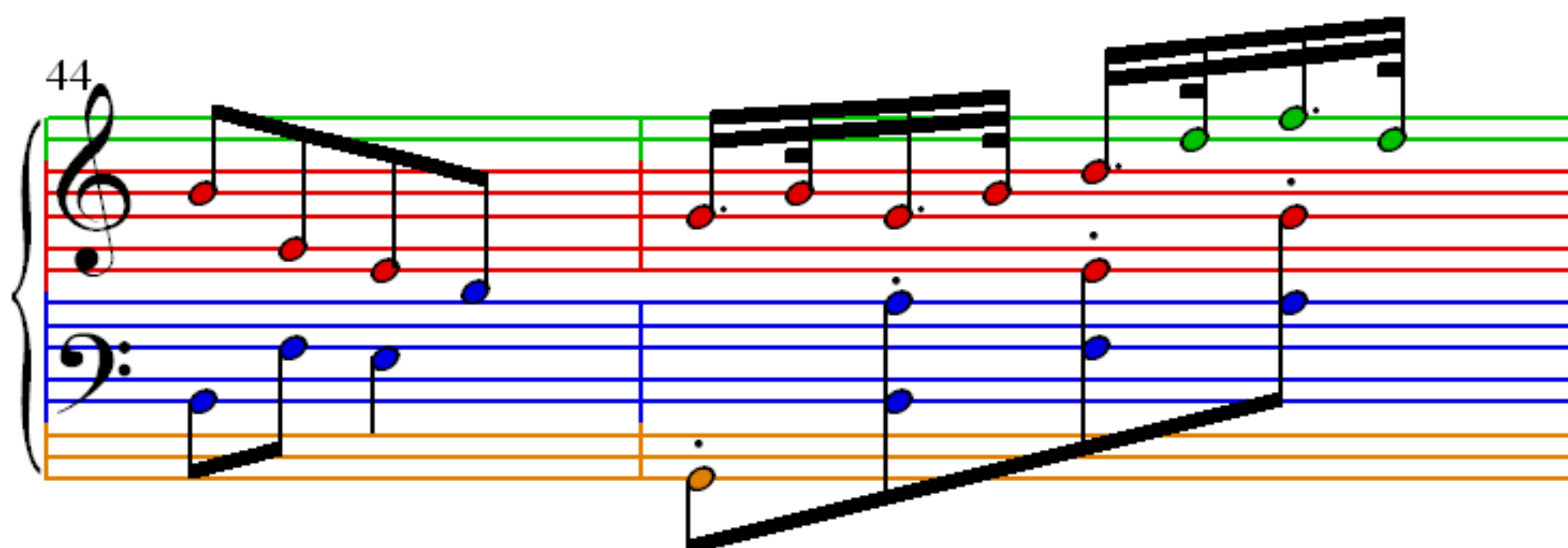
36

ff

38

40

42



51

53

p

55