

Happy Xmas

$\bullet = 100$

John Lennon

3 1 3 1

mf

5 2 1 4

Detailed description: This system contains the first two measures of the piano accompaniment. The treble clef staff has a key signature of one flat (Bb) and a 6/8 time signature. It begins with a triplet of eighth notes (Bb4, A4, G4) marked with a '3' above. The first measure is followed by a double bar line. The second measure starts with a dotted quarter note (Bb4) marked with a '1' above, followed by an eighth note (A4) marked with a '3' above, and then a quarter note (G4) marked with a '1' above. The bass clef staff has a whole rest in the first measure. In the second measure, it starts with a dotted quarter note (F3) marked with a '5' below, followed by an eighth note (E3) marked with a '2' below, and then a quarter note (D3) marked with a '1' below. The system concludes with a quarter note (C3) marked with a '4' below.

3 1 4 2

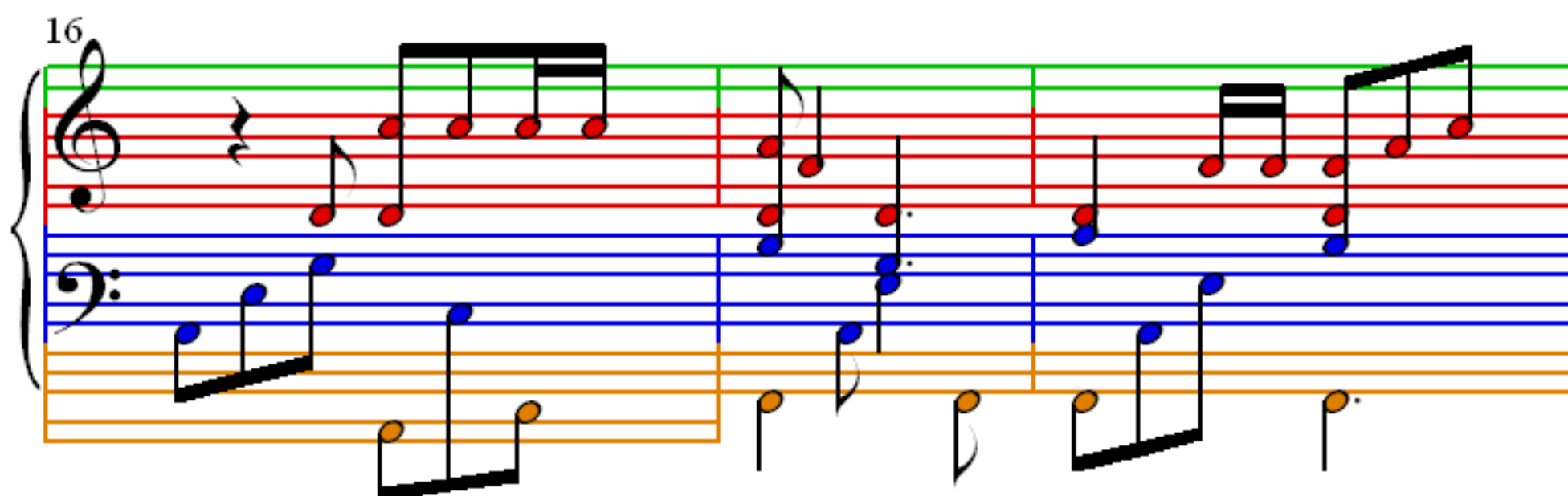
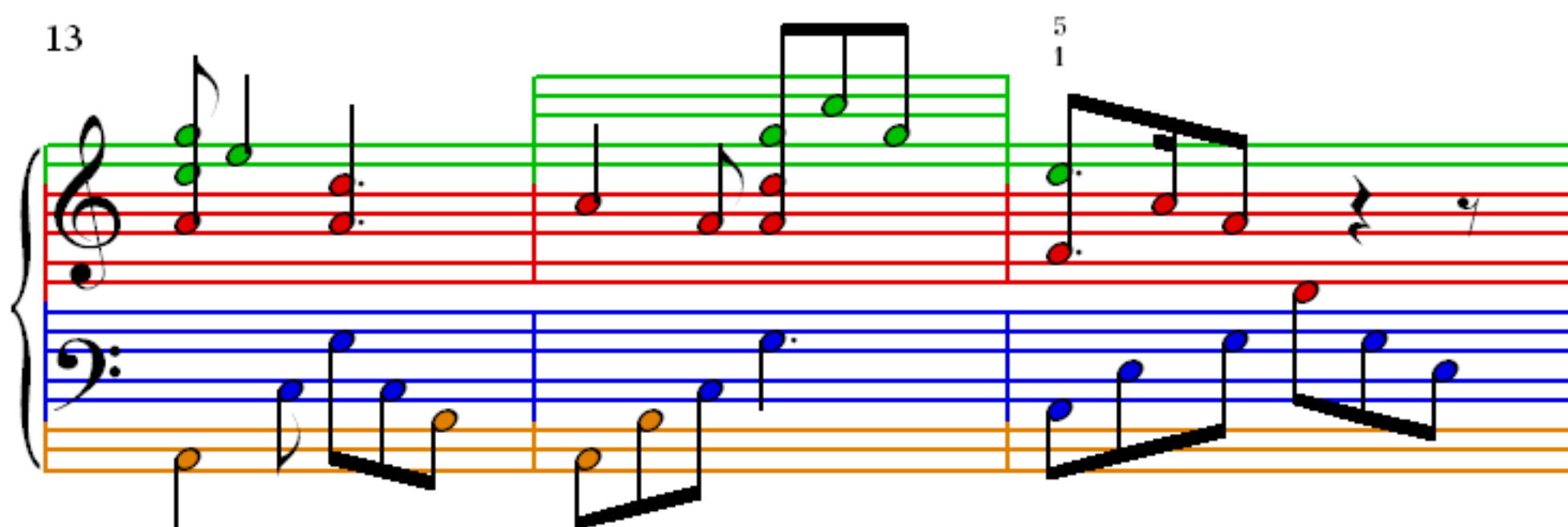
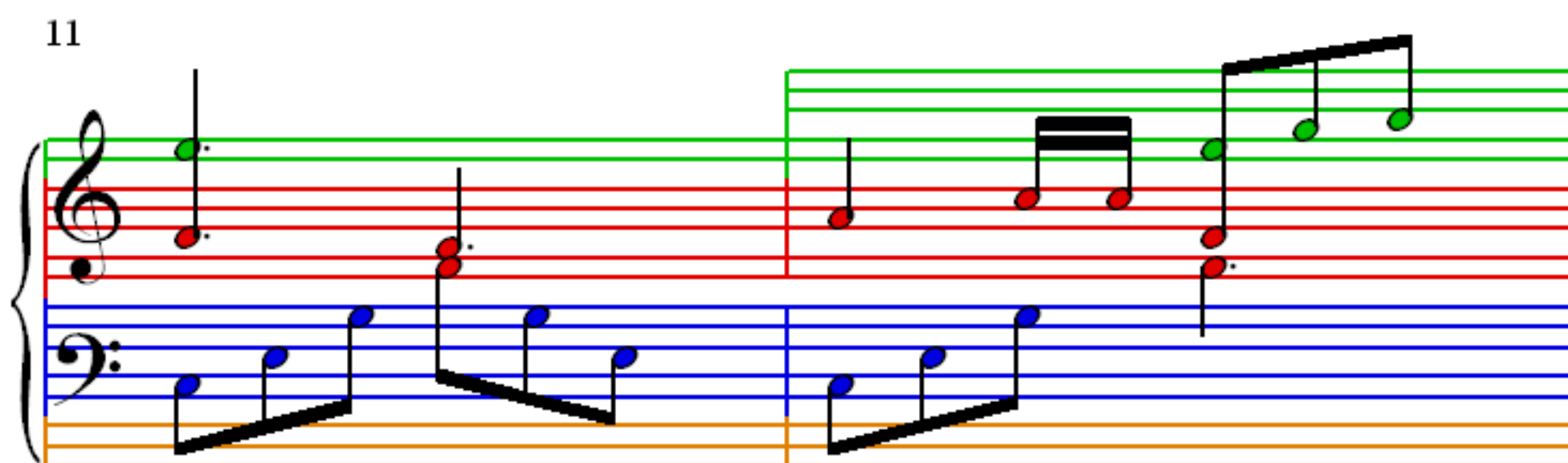
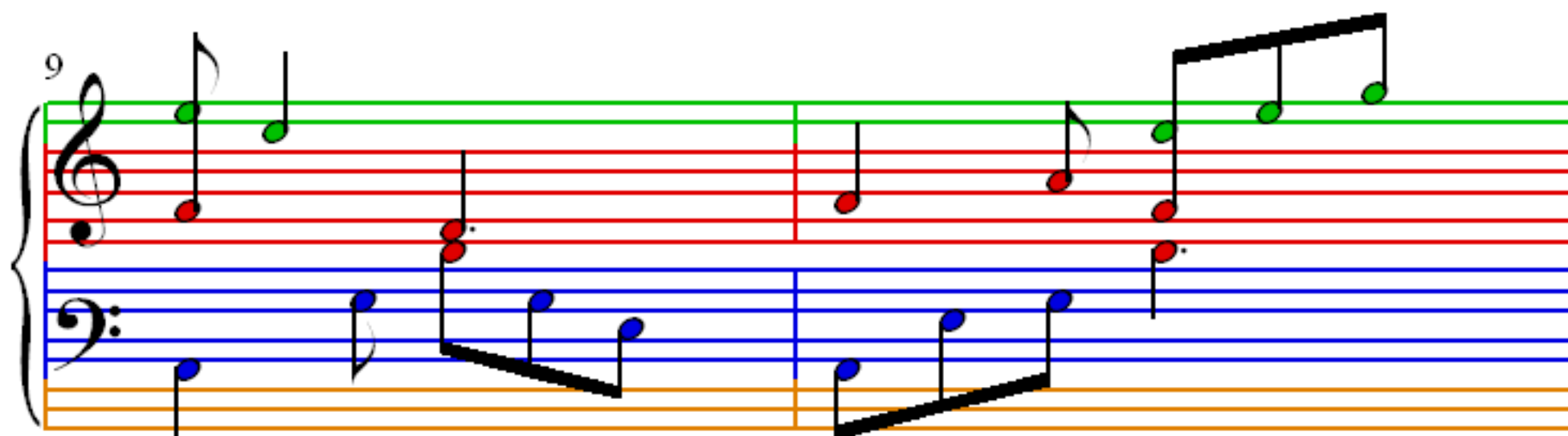
Detailed description: This system contains measures 3 and 4. The treble clef staff has a dotted quarter note (Bb4) marked with a '3' above in measure 3, followed by a quarter note (A4) marked with a '1' above in measure 4. The bass clef staff has a quarter note (D3) marked with a '5' below in measure 3, followed by a quarter note (E3) marked with a '4' below in measure 3 and a quarter note (F3) marked with a '2' below in measure 4.

5 1 4 2

Detailed description: This system contains measures 5 and 6. The treble clef staff has a quarter note (Bb4) marked with a '5' above in measure 5, followed by a quarter note (A4) marked with a '1' above in measure 6. The bass clef staff has a quarter note (D3) marked with a '5' below in measure 5, followed by a quarter note (E3) marked with a '4' below in measure 5 and a quarter note (F3) marked with a '2' below in measure 6.

7

Detailed description: This system contains measures 7 and 8. The treble clef staff has a quarter note (Bb4) marked with a '7' above in measure 7, followed by a quarter note (A4) marked with a '1' above in measure 8. The bass clef staff has a quarter note (D3) marked with a '5' below in measure 7, followed by a quarter note (E3) marked with a '4' below in measure 7 and a quarter note (F3) marked with a '2' below in measure 8.



19

22

1.2.

25

3.

28

31

1.
33

2.
35