

Etude op 10 no. 12

Frederic Chopin

1

$\bullet = 152$

4/4

4

4/4

7

4/4

10

13

16

19

Measures 19-21 of the piece. The right hand (treble clef) features a sequence of chords and single notes, with some notes highlighted in green and purple. The left hand (bass clef) plays a continuous eighth-note arpeggiated pattern, with notes highlighted in blue and orange.

22

Measures 22-24 of the piece. The right hand continues with chords and single notes, including some green and purple highlights. The left hand maintains the eighth-note arpeggiated pattern with blue and orange highlights.

25

Measures 25-27 of the piece. The right hand features a sequence of chords and single notes, with some notes highlighted in green and purple. The left hand continues the eighth-note arpeggiated pattern with blue and orange highlights.

28

Measures 28-30. Measure 28: Treble clef has a whole rest, bass clef has a descending eighth-note scale. Measure 29: Treble clef has a half note chord, bass clef has a descending eighth-note scale. Measure 30: Treble clef has a half note chord, bass clef has a descending eighth-note scale.

31

Measures 31-33. Measure 31: Treble clef has a half note chord, bass clef has a descending eighth-note scale. Measure 32: Treble clef has a half note chord, bass clef has a descending eighth-note scale. Measure 33: Treble clef has a half note chord, bass clef has a descending eighth-note scale.

34

Measures 34-36. Measure 34: Treble clef has a half note chord, bass clef has a descending eighth-note scale. Measure 35: Treble clef has a half note chord, bass clef has a descending eighth-note scale. Measure 36: Treble clef has a half note chord, bass clef has a descending eighth-note scale.

37

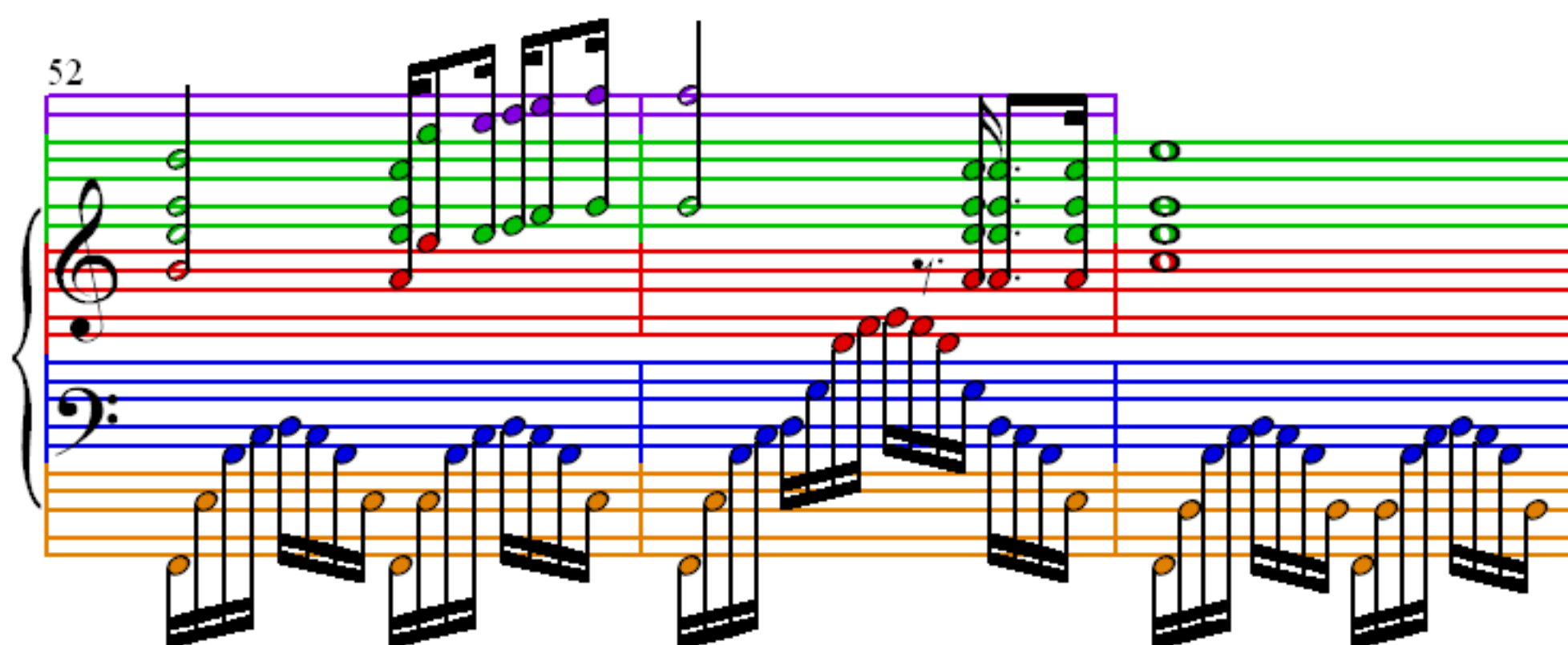
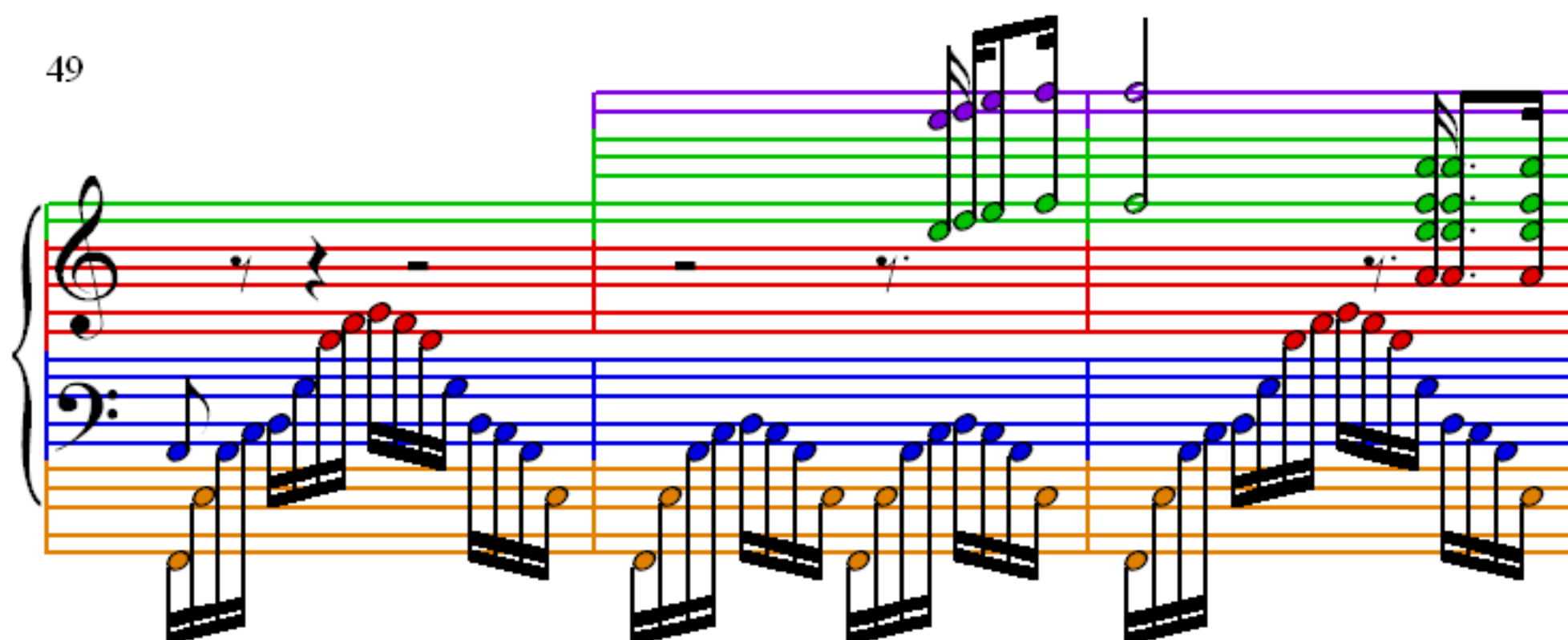
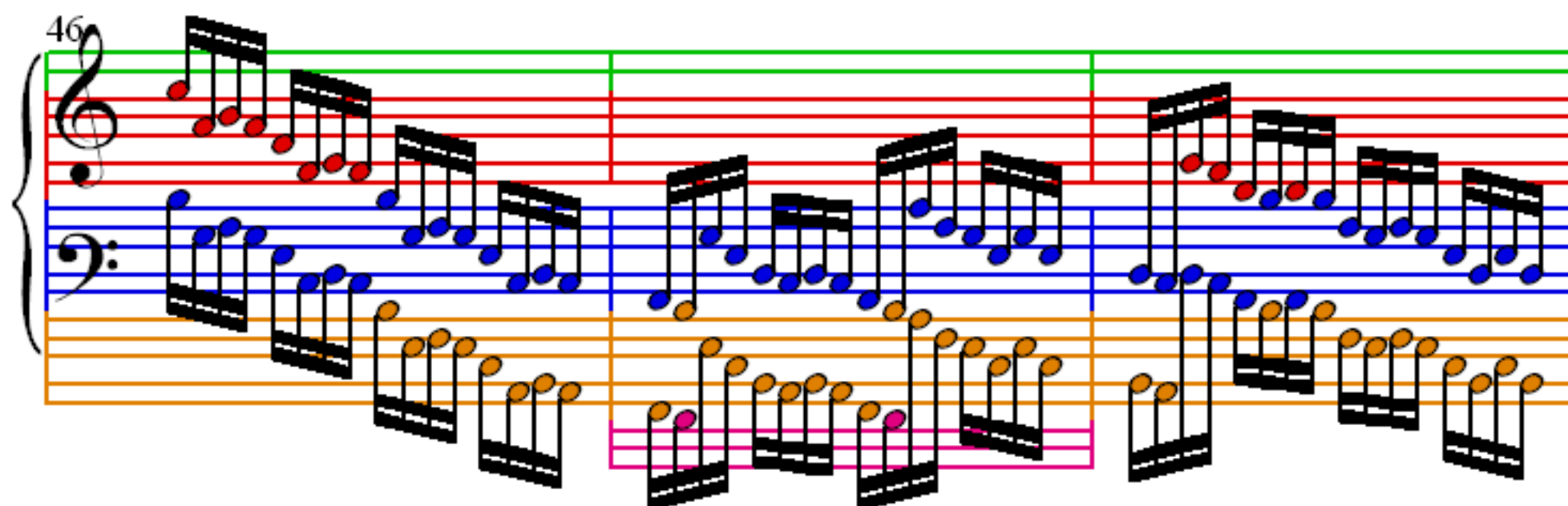
Measures 37-39 of Etude op 10 no. 12. The notation shows a grand staff with treble and bass clefs. The right hand (treble) has a purple staff with chords and a red staff with single notes. The left hand (bass) has a blue staff with chords and an orange staff with single notes. The music features complex chordal textures and melodic lines.

40

Measures 40-42 of Etude op 10 no. 12. The notation shows a grand staff with treble and bass clefs. The right hand (treble) has a purple staff with chords and a red staff with single notes. The left hand (bass) has a blue staff with chords and an orange staff with single notes. The music features complex chordal textures and melodic lines.

43

Measures 43-45 of Etude op 10 no. 12. The notation shows a grand staff with treble and bass clefs. The right hand (treble) has a purple staff with chords and a red staff with single notes. The left hand (bass) has a blue staff with chords and an orange staff with single notes. The music features complex chordal textures and melodic lines.



55

58

61

64

64

67

67

70

70

73

76

79

82