

# Minuet in G major

J S Bach

1

Measures 1-4 of the Minuet in G major. The treble clef staff (green lines) contains the melody, starting with a treble clef, a key signature of one sharp (F#), and a 3/4 time signature. The bass clef staff (blue lines) contains the accompaniment, starting with a bass clef and a key signature of one sharp (F#). The melody consists of eighth and sixteenth notes, while the accompaniment consists of quarter notes.

5

Measures 5-8 of the Minuet in G major. The treble clef staff (green lines) continues the melody with eighth and sixteenth notes. The bass clef staff (blue lines) continues the accompaniment with quarter notes. The bottom two lines of the bass staff are highlighted in orange.

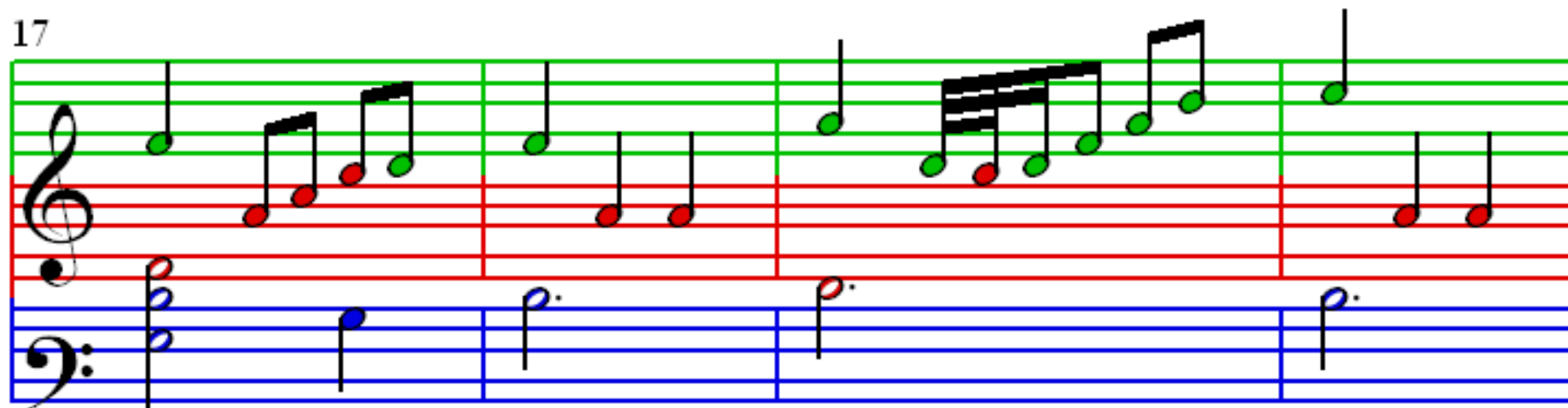
9

Measures 9-12 of the Minuet in G major. The treble clef staff (green lines) continues the melody with eighth and sixteenth notes. The bass clef staff (blue lines) continues the accompaniment with quarter notes. The bottom two lines of the bass staff are highlighted in orange.

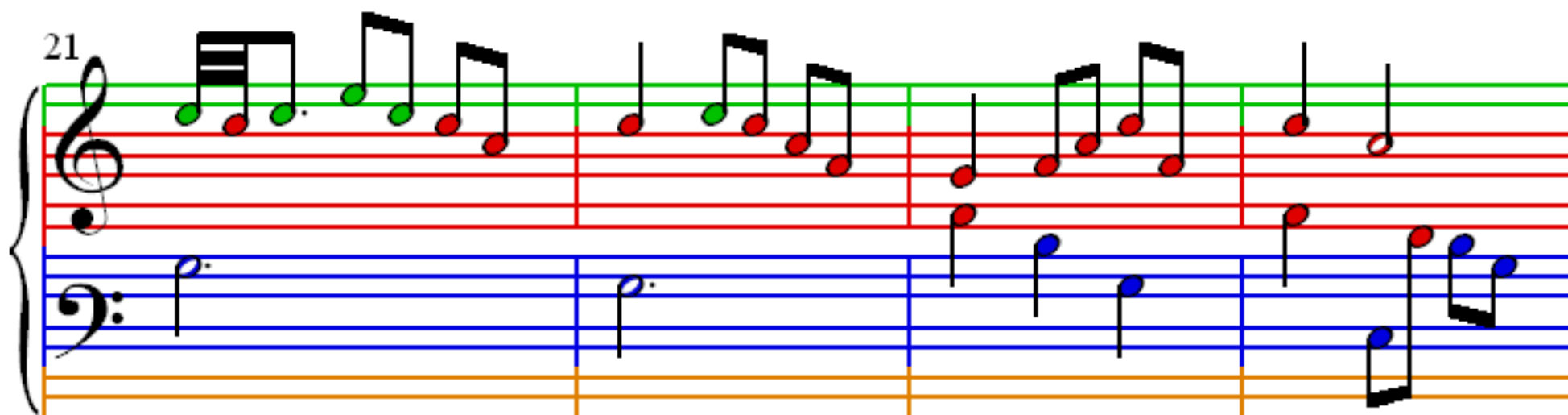
13

Measures 13-16 of the Minuet in G major. The treble clef staff (green lines) continues the melody with eighth and sixteenth notes. The bass clef staff (blue lines) continues the accompaniment with quarter notes. The bottom two lines of the bass staff are highlighted in orange.

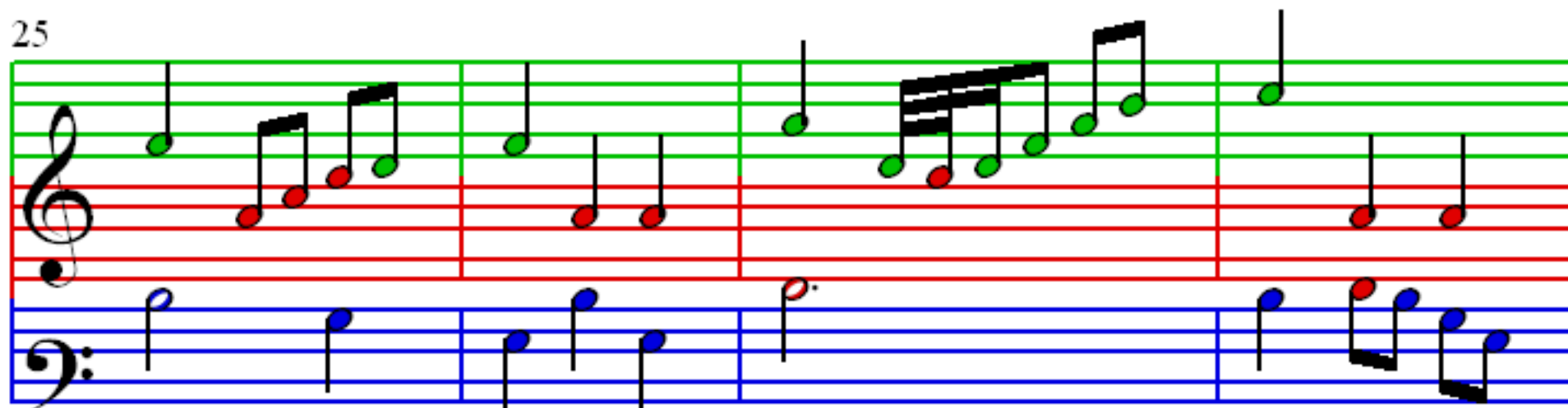
17



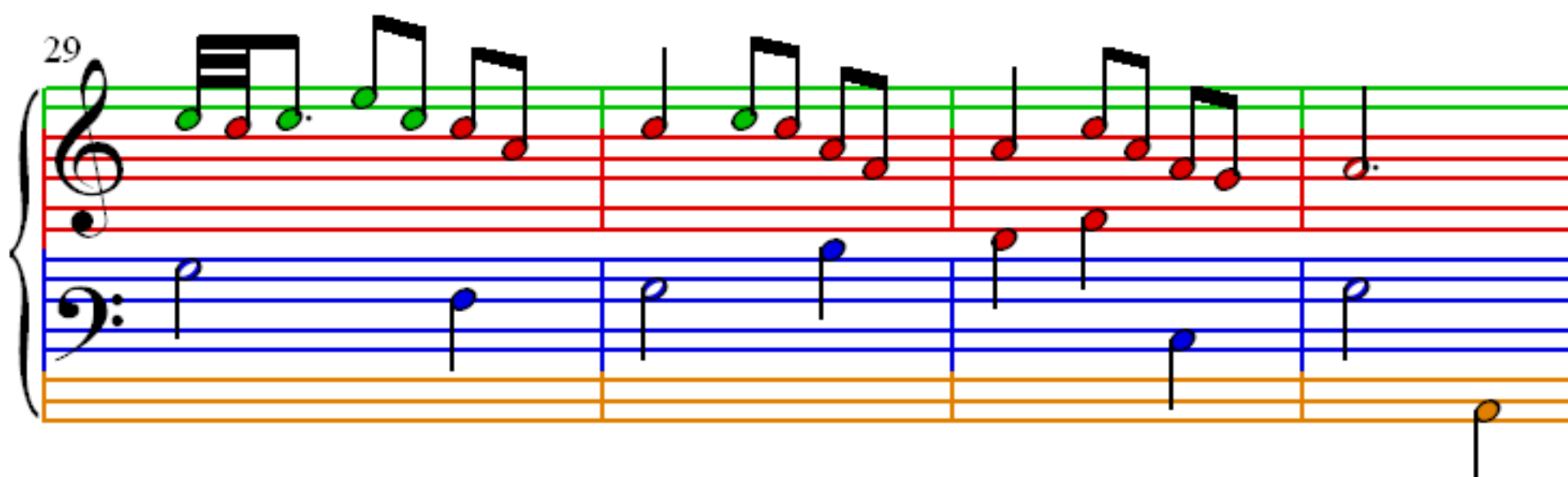
21



25



29



33

Measures 33-36: Treble clef staff (green line, red line) and Bass clef staff (blue line, orange line). The music features eighth and sixteenth notes in the treble and quarter notes in the bass.

37

Measures 37-40: Treble clef staff (green line, red line) and Bass clef staff (blue line, orange line). The music features eighth and sixteenth notes in the treble and quarter notes in the bass.

41

Measures 41-44: Treble clef staff (green line, red line) and Bass clef staff (blue line, orange line). The music features eighth and sixteenth notes in the treble and quarter notes in the bass.

45

Measures 45-48: Treble clef staff (green line, red line) and Bass clef staff (blue line, orange line). The music features eighth and sixteenth notes in the treble and quarter notes in the bass.

49

53

57

61