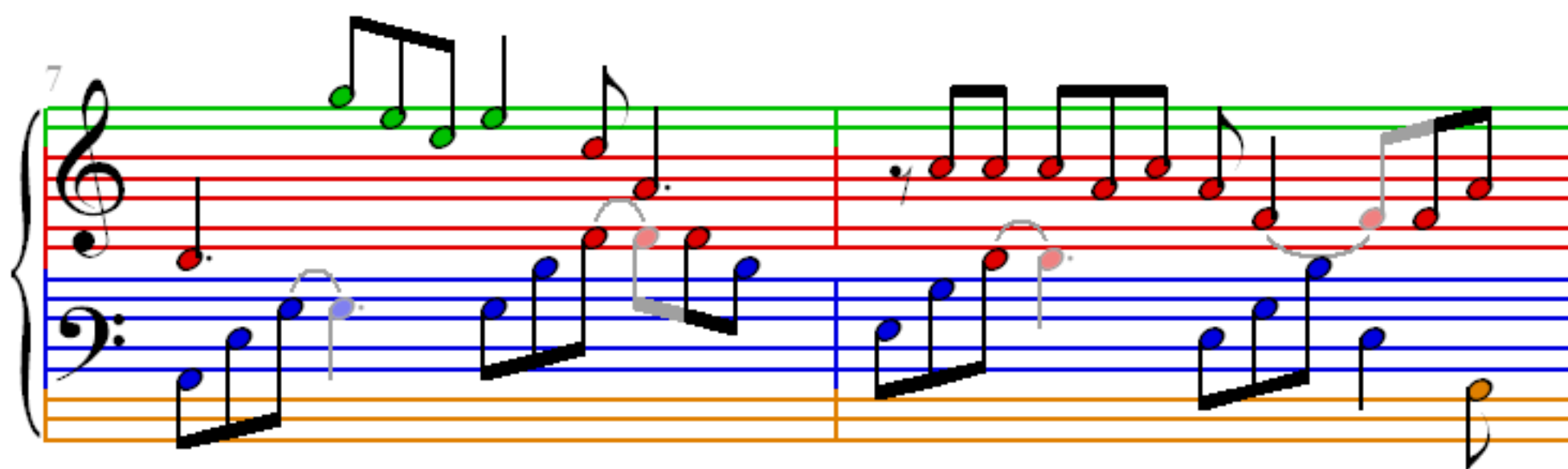
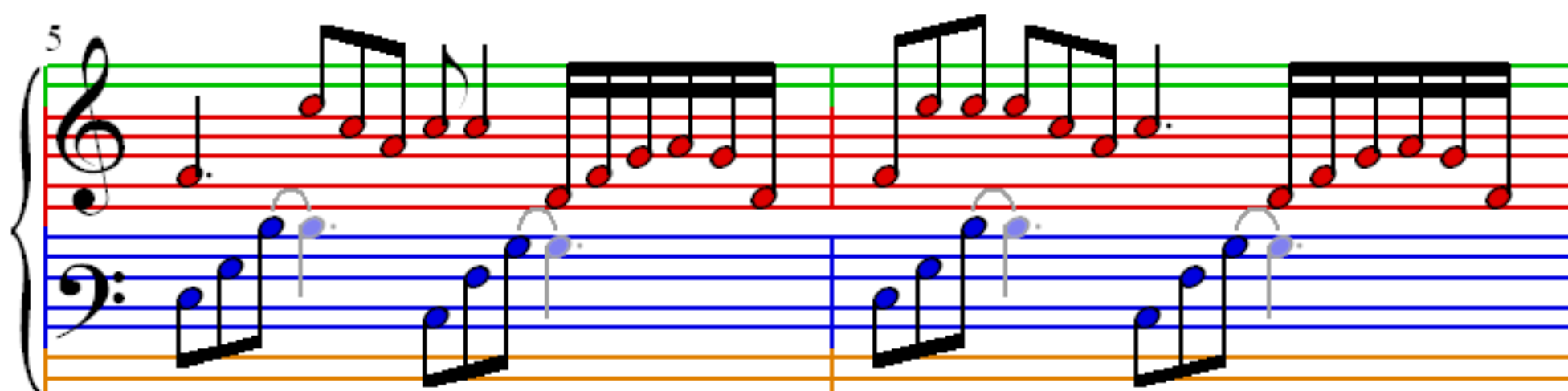
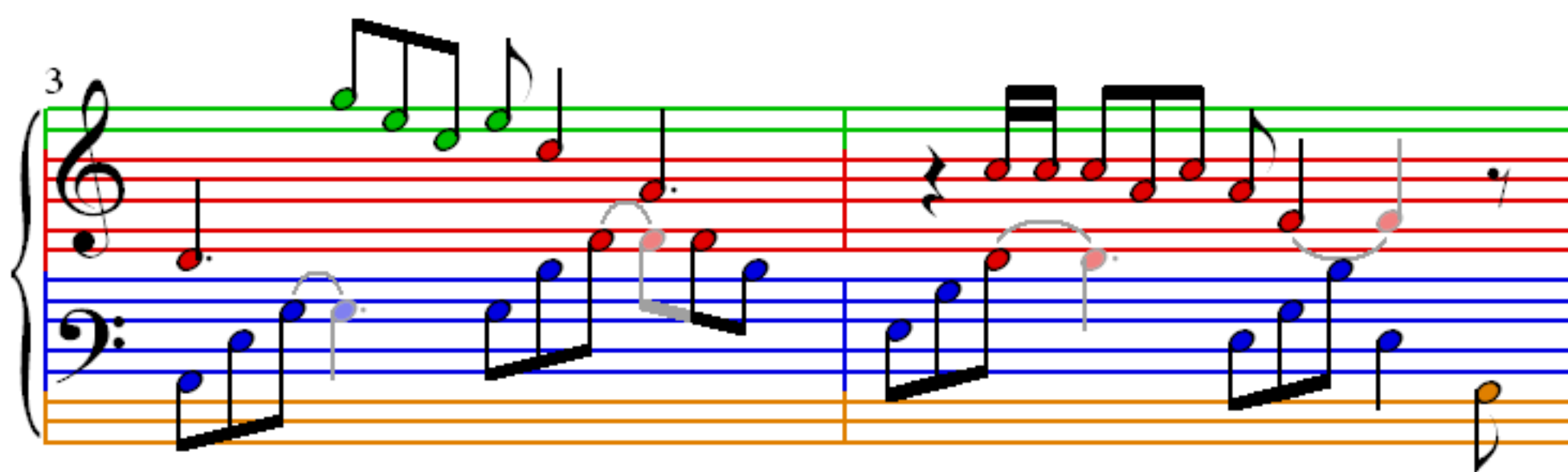
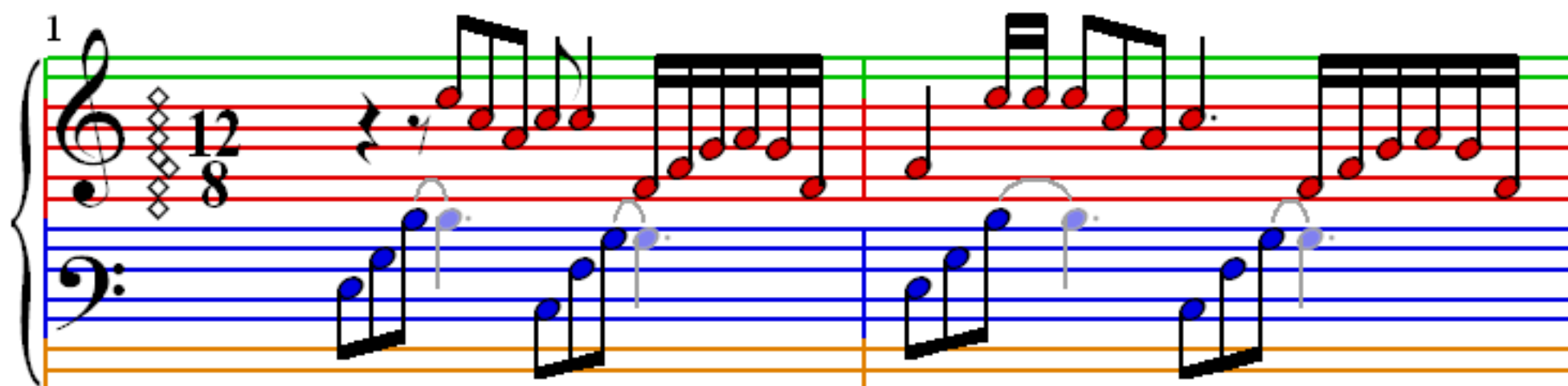


Nights In White Satin

Moody Blues



9

Measures 9 and 10 of the piece. The treble clef staff (top) features a melody with eighth and quarter notes, some beamed together. The bass clef staff (bottom) provides a harmonic accompaniment with eighth and quarter notes. The notation includes various note heads (black, red, blue, green, orange) and rests.

11

Measures 11 and 12. Measure 11 continues the melodic and harmonic patterns. Measure 12 shows a change in the bass line with a series of beamed eighth notes. The treble staff has some notes with stems pointing downwards.

13

Measures 13 and 14. The melody in the treble staff continues with eighth and quarter notes. The bass staff features a steady accompaniment of eighth notes. Measure 14 ends with a double bar line and repeat dots.

15

Measures 15 and 16. The musical patterns continue from the previous measures. Measure 16 concludes the section with a final chord in the treble staff and a double bar line with repeat dots.

