


# Maxwell's Silver Hammer

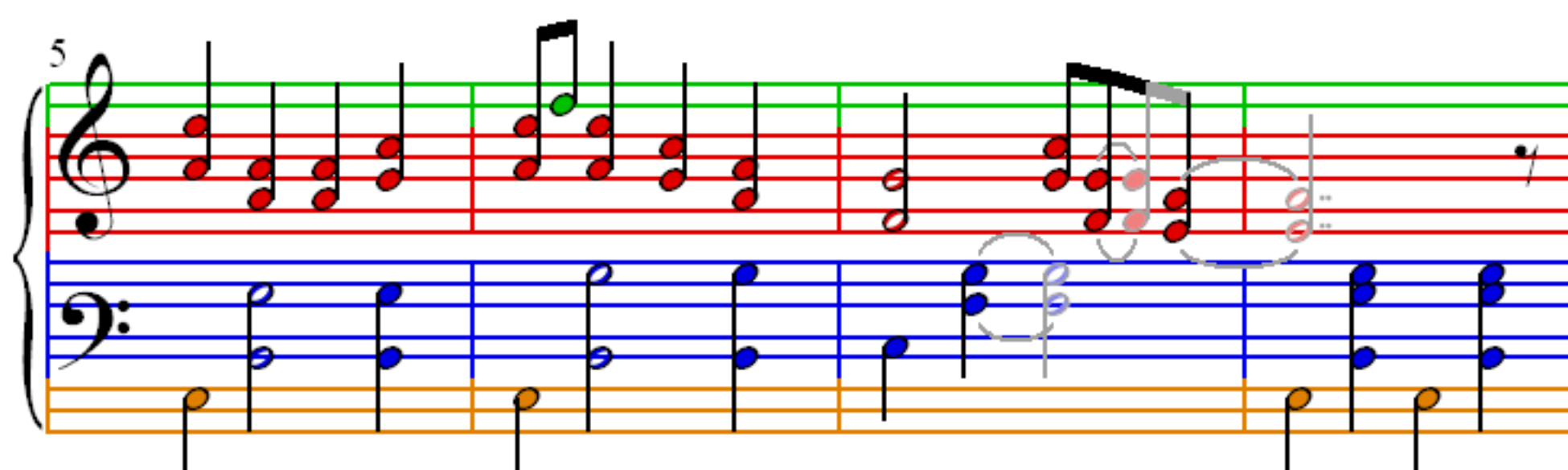
 = 140

The Beatles

1



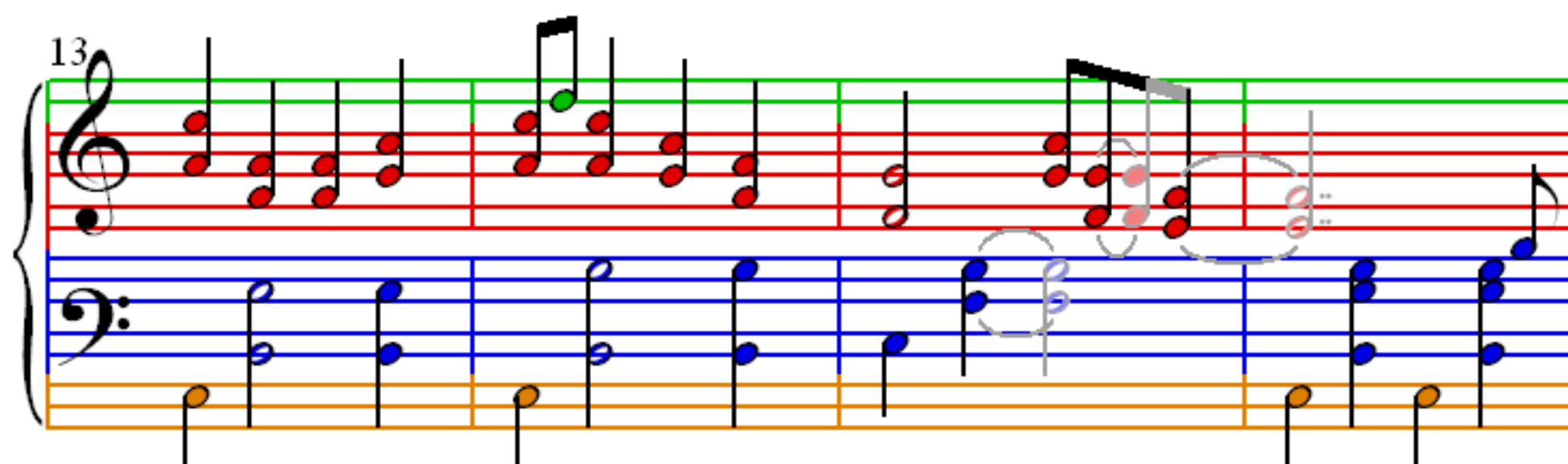
5

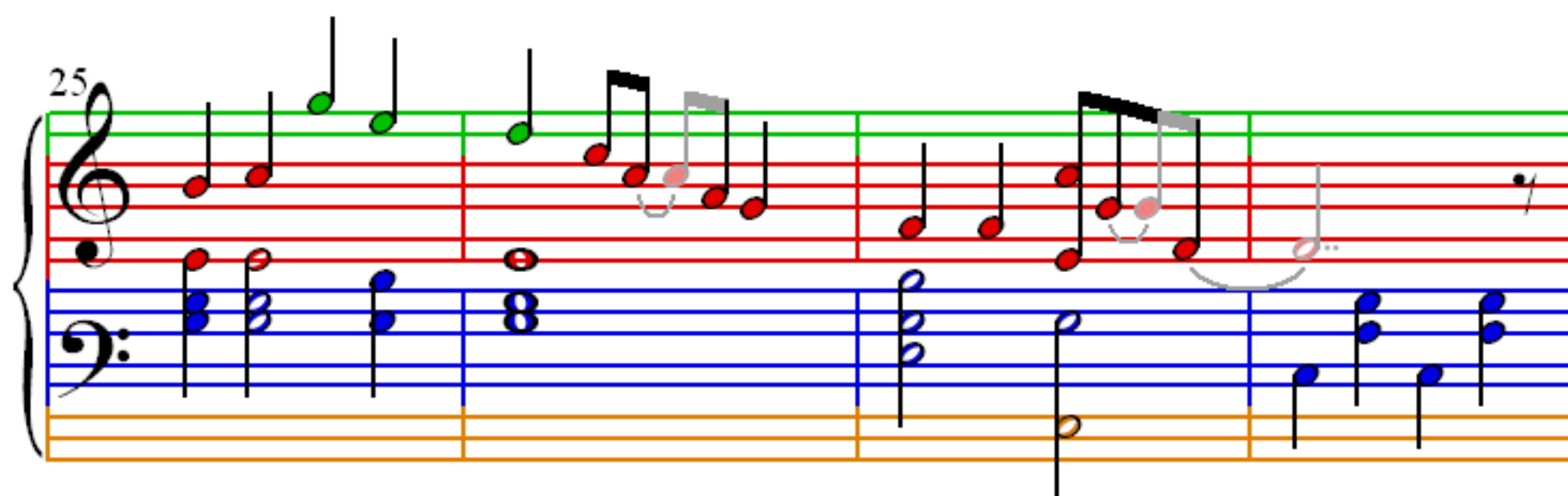
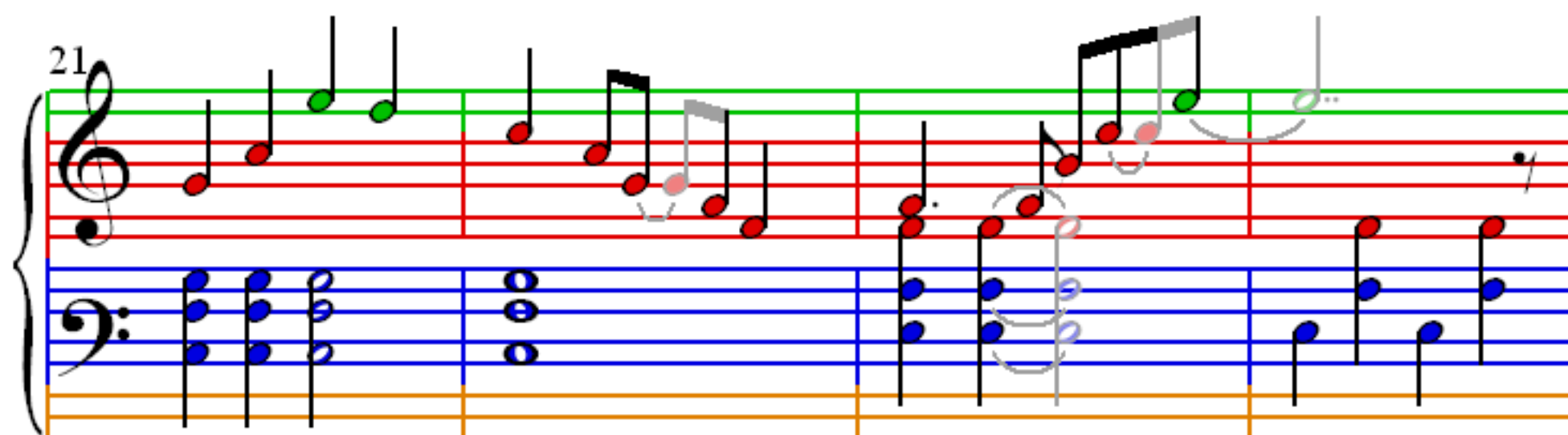
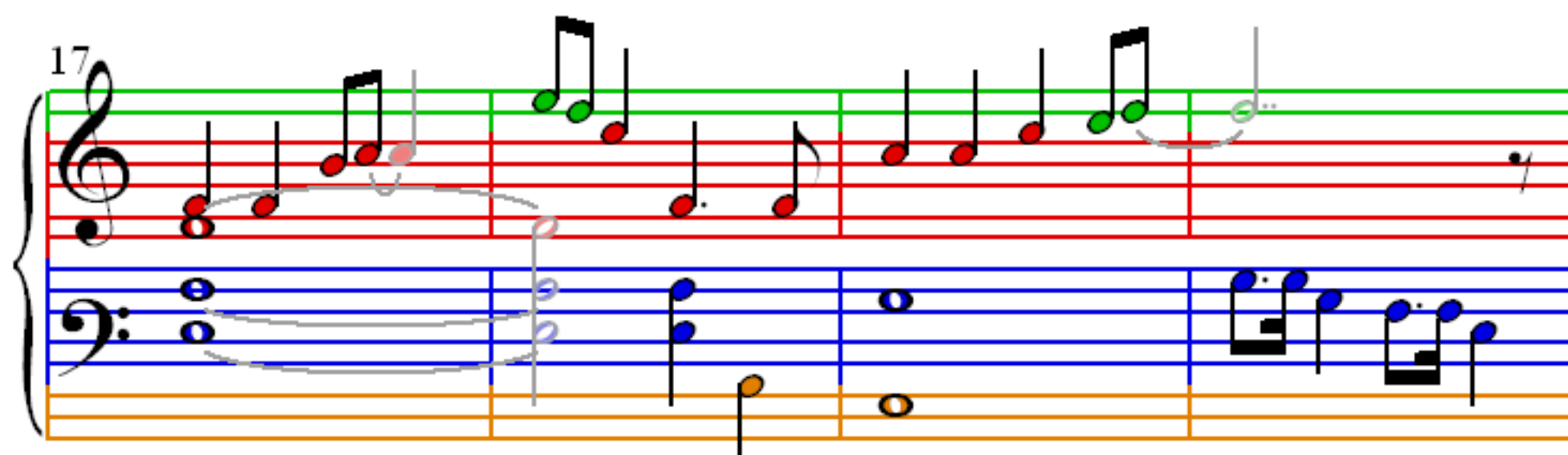


9



13





A musical score for the song 'The Rose Tree'. The score is written for piano and voice. The piano part is in G major and 3/4 time. The melody is in the right hand, and the accompaniment is in the left hand. The score is divided into four measures. The first measure shows the beginning of the melody. The second measure shows the melody continuing. The third measure shows the melody continuing. The fourth measure shows the melody ending with a double bar line. The piano part is written in a grand staff with a treble and bass clef. The melody is in the treble clef, and the accompaniment is in the bass clef. The score is written in a simple, clear style with red and blue ink.

A musical score for the song 'The Rose Tree'. The score is written for a piano, with a treble clef on the top staff and a bass clef on the bottom staff. The key signature is one flat (B-flat), and the time signature is 4/4. The music is in common time. The melody is written in the treble clef, and the accompaniment is written in the bass clef. The melody consists of a series of eighth and sixteenth notes, with some rests. The accompaniment consists of a steady eighth-note pattern in the left hand, and a series of chords and single notes in the right hand. The score is divided into four measures. The first measure contains the first line of the melody and the first line of the accompaniment. The second measure contains the second line of the melody and the second line of the accompaniment. The third measure contains the third line of the melody and the third line of the accompaniment. The fourth measure contains the fourth line of the melody and the fourth line of the accompaniment. The score is written in a simple, clear style, with a focus on the melody and the accompaniment.

A musical score for the song 'The Rose Tree'. The score is written for a piano and voice. The piano part is in 2/4 time and consists of two staves: a treble staff with a key signature of one sharp (F#) and a bass staff with a key signature of one flat (Bb). The melody is in the treble staff, starting on a middle C (C4) and moving up stepwise to a G4 (the fifth line of the staff). The bass staff provides a simple harmonic accompaniment, mostly using whole and half notes. The voice part is written in a single staff with a treble clef and a key signature of one sharp (F#). The melody is in the voice staff, starting on a middle C (C4) and moving up stepwise to a G4 (the fifth line of the staff). The lyrics are written below the voice staff. The score is divided into four measures by vertical bar lines. The first measure contains the first line of the melody and the first line of the piano accompaniment. The second measure contains the second line of the melody and the second line of the piano accompaniment. The third measure contains the third line of the melody and the third line of the piano accompaniment. The fourth measure contains the fourth line of the melody and the fourth line of the piano accompaniment. The score ends with a double bar line and a repeat sign.

49

53

57

61

65

Measures 65-68. Treble clef: Measure 65 (red quarter, red quarter, red quarter, red quarter), Measure 66 (red quarter, red quarter, red quarter, red quarter), Measure 67 (red quarter, red quarter, red quarter, red quarter), Measure 68 (red quarter, red quarter, red quarter, red quarter). Bass clef: Measure 65 (blue quarter, blue quarter, blue quarter, blue quarter), Measure 66 (blue quarter, blue quarter, blue quarter, blue quarter), Measure 67 (blue quarter, blue quarter, blue quarter, blue quarter), Measure 68 (blue quarter, blue quarter, blue quarter, blue quarter).

69

Measures 69-71. Treble clef: Measure 69 (red quarter, red quarter, red quarter, red quarter), Measure 70 (red quarter, red quarter, red quarter, red quarter), Measure 71 (red quarter, red quarter, red quarter, red quarter). Bass clef: Measure 69 (blue quarter, blue quarter, blue quarter, blue quarter), Measure 70 (blue quarter, blue quarter, blue quarter, blue quarter), Measure 71 (blue quarter, blue quarter, blue quarter, blue quarter).

72

Measures 72-74. Treble clef: Measure 72 (red quarter, red quarter, red quarter, red quarter), Measure 73 (red quarter, red quarter, red quarter, red quarter), Measure 74 (red quarter, red quarter, red quarter, red quarter). Bass clef: Measure 72 (blue quarter, blue quarter, blue quarter, blue quarter), Measure 73 (blue quarter, blue quarter, blue quarter, blue quarter), Measure 74 (blue quarter, blue quarter, blue quarter, blue quarter).

75

Measures 75-77. Treble clef: Measure 75 (red quarter, red quarter, red quarter, red quarter), Measure 76 (red quarter, red quarter, red quarter, red quarter), Measure 77 (red quarter, red quarter, red quarter, red quarter). Bass clef: Measure 75 (blue quarter, blue quarter, blue quarter, blue quarter), Measure 76 (blue quarter, blue quarter, blue quarter, blue quarter), Measure 77 (blue quarter, blue quarter, blue quarter, blue quarter).

78

Measures 78-80. Treble clef: Measure 78 has a red quarter note (G4), a red quarter note (A4), a red quarter note (B4), and a green half note (C5). Measure 79 has a red quarter note (B4), a red quarter note (A4), a red quarter note (G4), and a green half note (F#4). Measure 80 has a red quarter note (E4), a red quarter note (D4), a red quarter note (C4), and a green half note (B3). Bass clef: Measure 78 has a blue quarter note (F3), a blue quarter note (E3), and a blue quarter note (D3). Measure 79 has a blue quarter note (C3), a blue quarter note (B2), and a blue quarter note (A2). Measure 80 has a blue quarter note (G2), a blue quarter note (F2), and a blue quarter note (E2).

81

Measures 81-83. Treble clef: Measure 81 has a red quarter note (D4), a red quarter note (E4), and a green half note (F#4). Measure 82 has a red quarter note (G4), a red quarter note (A4), a red quarter note (B4), and a green half note (C5). Measure 83 has a red quarter note (B4), a red quarter note (A4), a red quarter note (G4), and a green half note (F#4). Bass clef: Measure 81 has a blue quarter note (F3), a blue quarter note (E3), and a blue quarter note (D3). Measure 82 has a blue quarter note (C3), a blue quarter note (B2), and a blue quarter note (A2). Measure 83 has a blue quarter note (G2), a blue quarter note (F2), and a blue quarter note (E2).

84

Measures 84-87. Treble clef: Measure 84 has a red quarter note (D4), a red quarter note (E4), and a green half note (F#4). Measure 85 has a red quarter note (G4), a red quarter note (A4), a red quarter note (B4), and a green half note (C5). Measure 86 has a red quarter note (B4), a red quarter note (A4), a red quarter note (G4), and a green half note (F#4). Measure 87 has a red quarter note (E4), a red quarter note (D4), a red quarter note (C4), and a green half note (B3). Bass clef: Measure 84 has a blue quarter note (F3), a blue quarter note (E3), and a blue quarter note (D3). Measure 85 has a blue quarter note (C3), a blue quarter note (B2), and a blue quarter note (A2). Measure 86 has a blue quarter note (G2), a blue quarter note (F2), and a blue quarter note (E2). Measure 87 has a blue quarter note (D2), a blue quarter note (C2), and a blue quarter note (B1).

88

Measures 88-90. Treble clef: Measure 88 has a red quarter note (D4), a red quarter note (E4), and a red quarter note (F#4). Measure 89 has a red quarter note (G4), a red quarter note (A4), and a red quarter note (B4). Measure 90 has a red quarter note (C5), a red quarter note (B4), and a red quarter note (A4). Bass clef: Measure 88 has a blue quarter note (F3), a blue quarter note (E3), and a blue quarter note (D3). Measure 89 has a blue quarter note (C3), a blue quarter note (B2), and a blue quarter note (A2). Measure 90 has a blue quarter note (G2), a blue quarter note (F2), and a blue quarter note (E2).