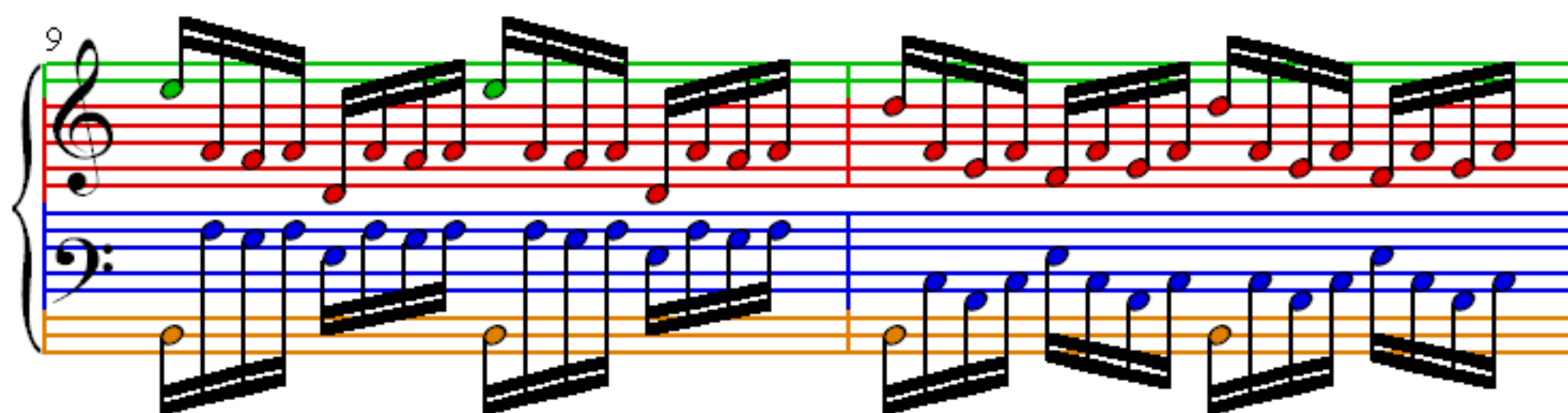


Prelude in C Minor

J S Bach

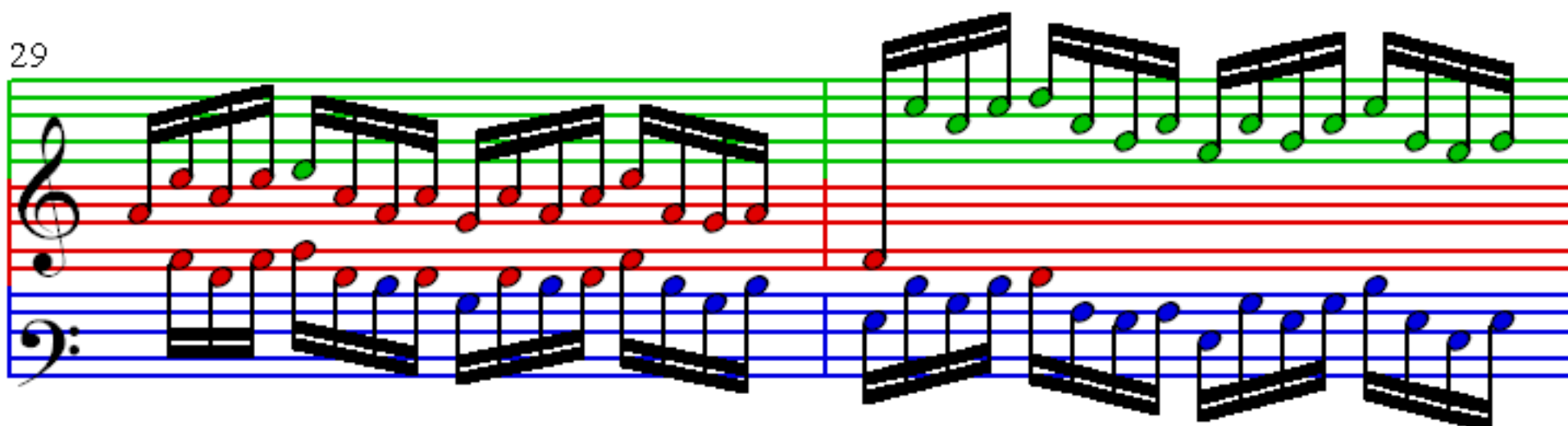
$\text{♩} = 90$

The image displays the first seven measures of the Prelude in C Minor by J.S. Bach. The score is written for piano in 4/4 time, with a tempo marking of quarter note = 90. The key signature is C minor, indicated by three flats (B-flat, E-flat, and A-flat) on the treble clef staff. The music is presented in four systems, each containing a grand staff (treble and bass clefs). The notes are color-coded: red for the treble staff and blue for the bass staff. The first system (measures 1-2) begins with a treble staff measure number '1'. The second system (measures 3-4) begins with a treble staff measure number '3'. The third system (measures 5-6) begins with a treble staff measure number '5'. The fourth system (measures 7-8) begins with a treble staff measure number '7'. The bass staff in the fourth system shows an orange-colored note on the first line (C4) in the first measure.



This image displays a musical score for the 'Prelude in C Minor' by Frédéric Chopin, specifically measures 19 through 28. The score is written for piano and is organized into five systems, each containing a grand staff (treble and bass clefs). The notation is color-coded: red for the right hand (treble clef) and blue for the left hand (bass clef). The key signature is one flat (B-flat), and the time signature is 4/4. The first four systems (measures 19-24) feature a continuous, flowing melody in the right hand, while the left hand provides a steady, rhythmic accompaniment. The fifth system (measures 25-28) shows a more complex texture, with the right hand playing a series of chords and the left hand continuing its accompaniment. The score is presented in a clear, legible format, suitable for educational or performance purposes.

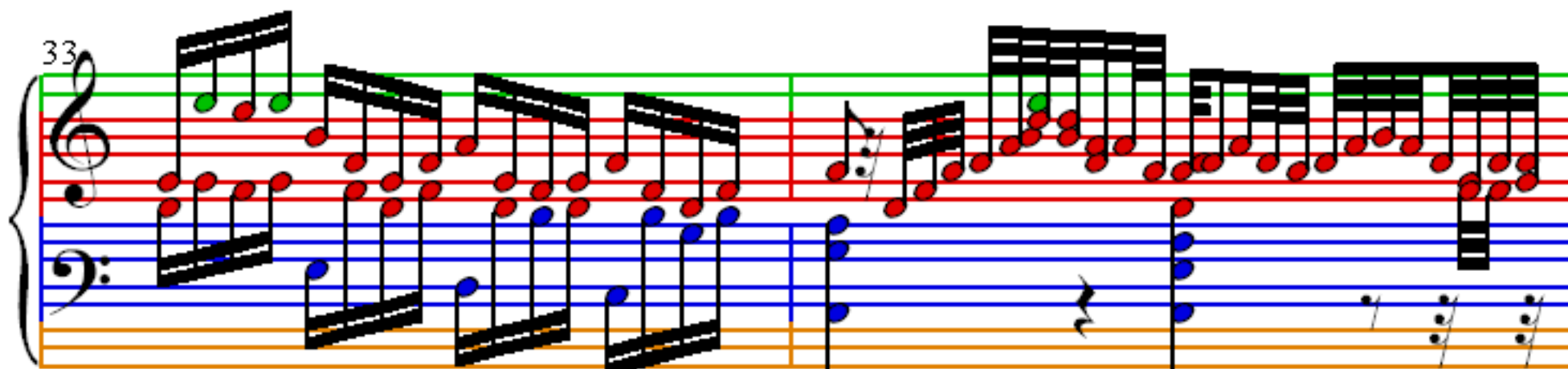
29



31



33



35



37

