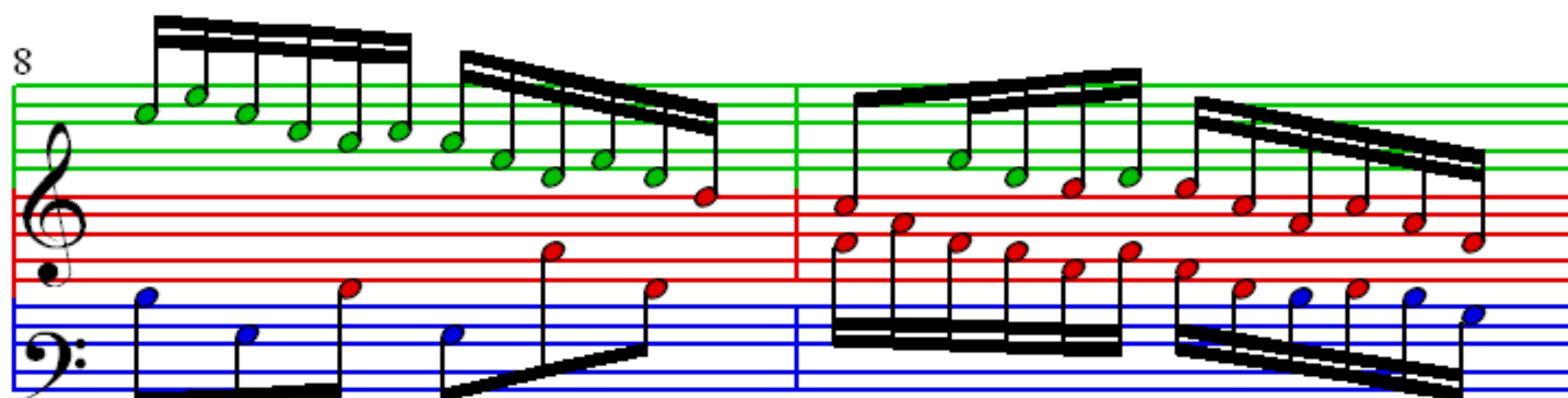
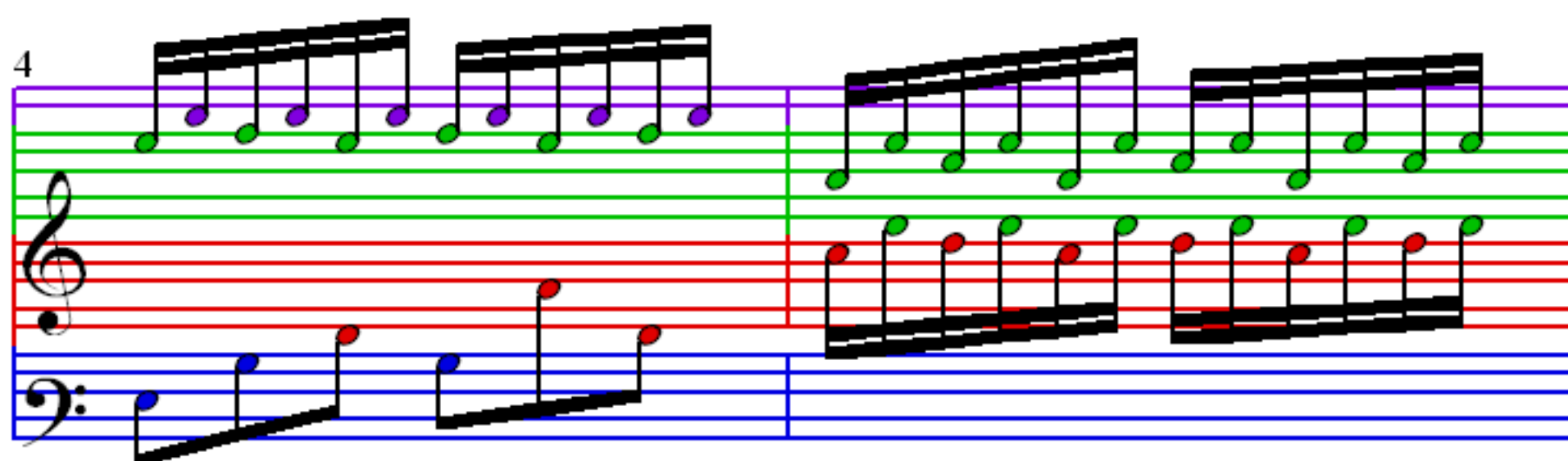
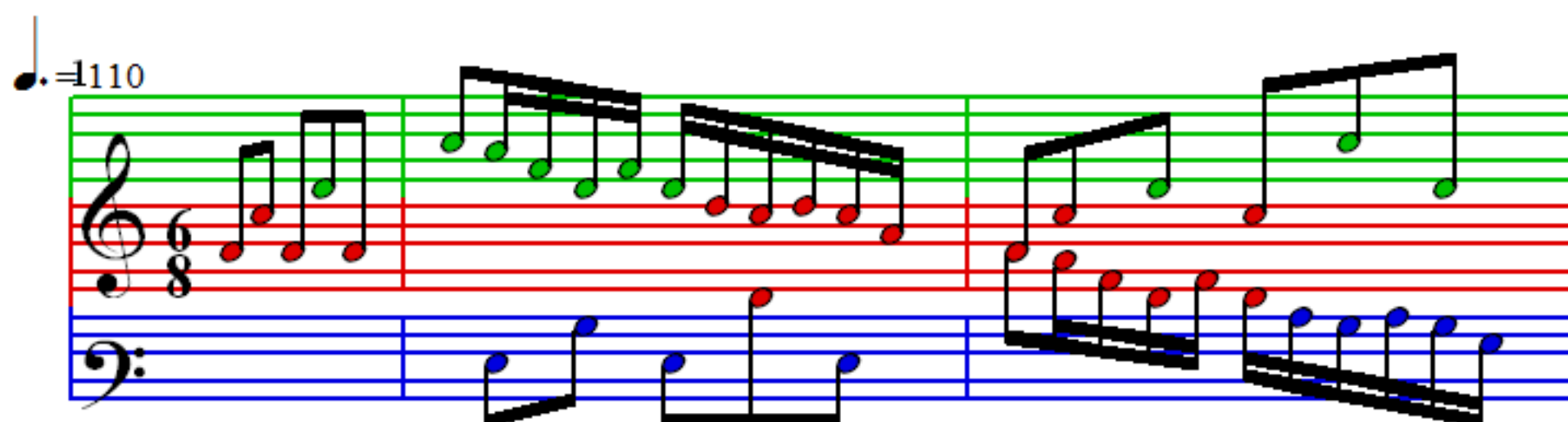
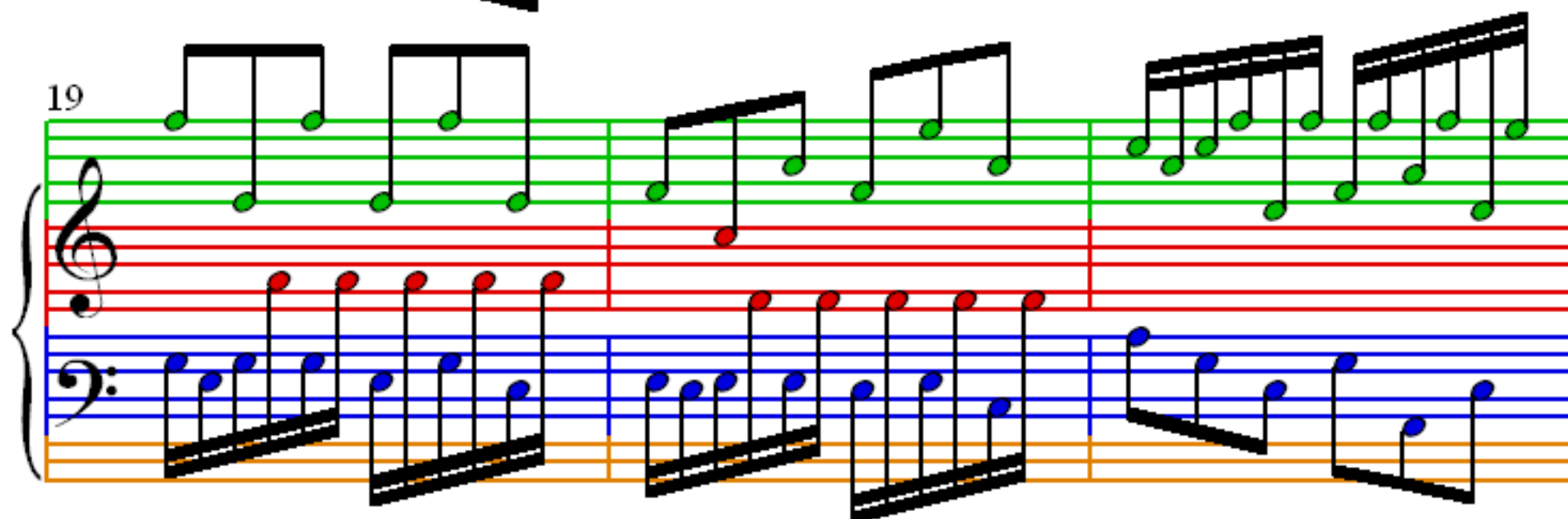
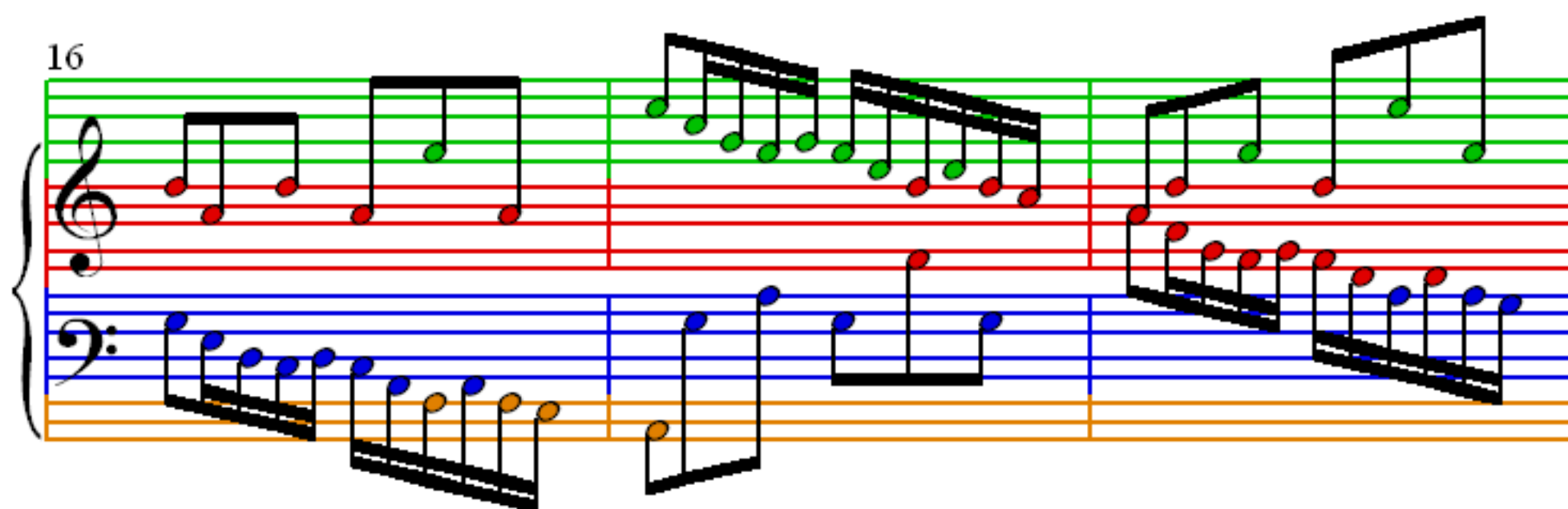
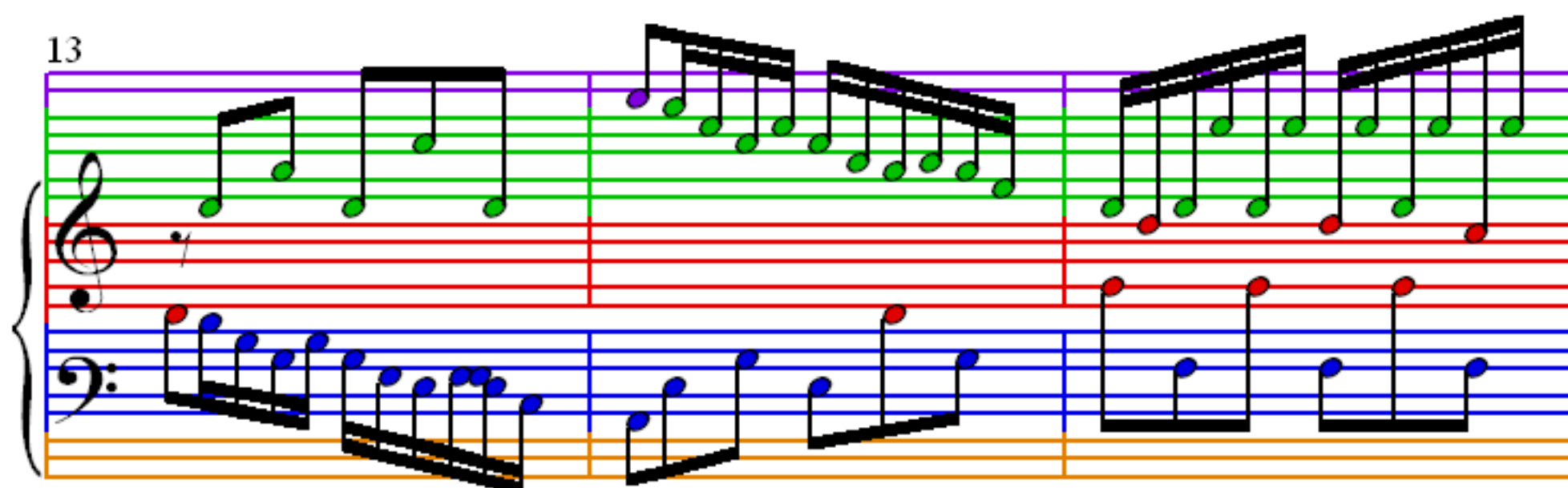
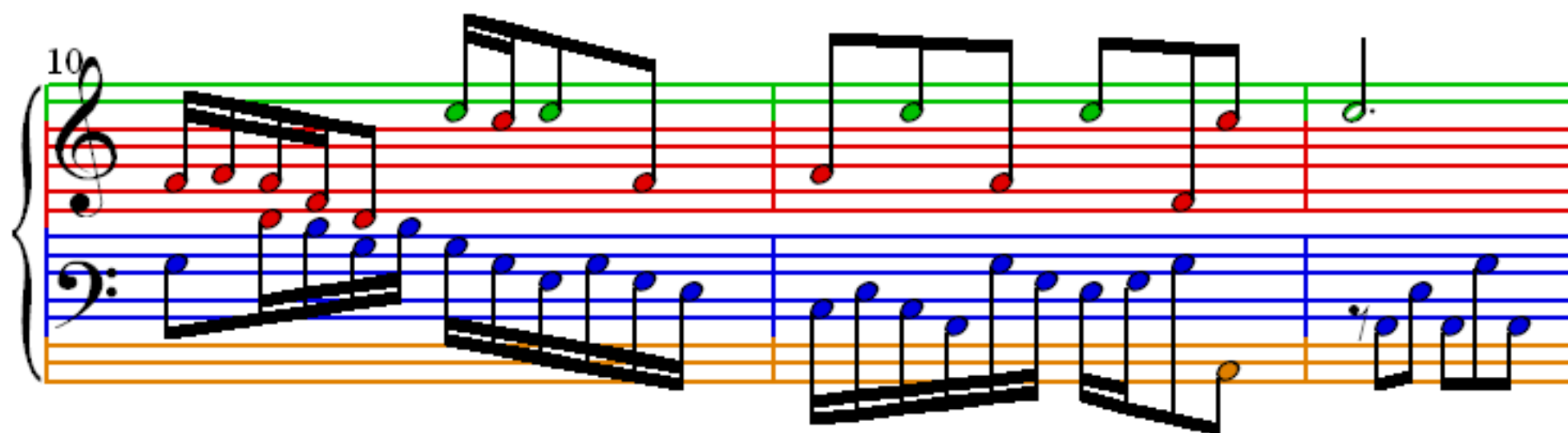


Invention No. 8

J S Bach





22

Measures 22-24 of Invention No. 8. The treble staff (green and red lines) features a melody of eighth and sixteenth notes, with some notes beamed in groups. The bass staff (blue and orange lines) provides a harmonic accompaniment with eighth and sixteenth notes, including some beamed groups. The notation is color-coded: treble notes are green or red, and bass notes are blue or orange.

25

Measures 25-27 of Invention No. 8. The treble staff continues the melodic line with eighth and sixteenth notes. The bass staff features a more active accompaniment with beamed eighth and sixteenth notes. The notation remains color-coded by staff.

28

Measures 28-30 of Invention No. 8. The treble staff shows a continuation of the melodic pattern. The bass staff has a steady accompaniment of beamed eighth notes. The notation is color-coded by staff.

31

Measures 31-34 of Invention No. 8. The treble staff features a melodic line with some beamed eighth notes. The bass staff provides a harmonic accompaniment with beamed eighth and sixteenth notes. The notation is color-coded by staff.