

Big Spender

$\bullet = 120$

Shirley Bassey

1

Measures 1-3 of the piano introduction. The treble clef staff has a key signature of one sharp (F#) and a 4/4 time signature. The melody consists of eighth and quarter notes. The bass clef staff provides a harmonic accompaniment with eighth and quarter notes. Measure 3 ends with a double bar line.

4

Measures 4-6 of the piano introduction. The treble clef staff continues the melody with eighth and quarter notes. The bass clef staff continues the accompaniment. Measure 6 ends with a double bar line.

7

Measures 7-9 of the piano introduction. The treble clef staff continues the melody. The bass clef staff continues the accompaniment. Measure 9 ends with a double bar line.

10

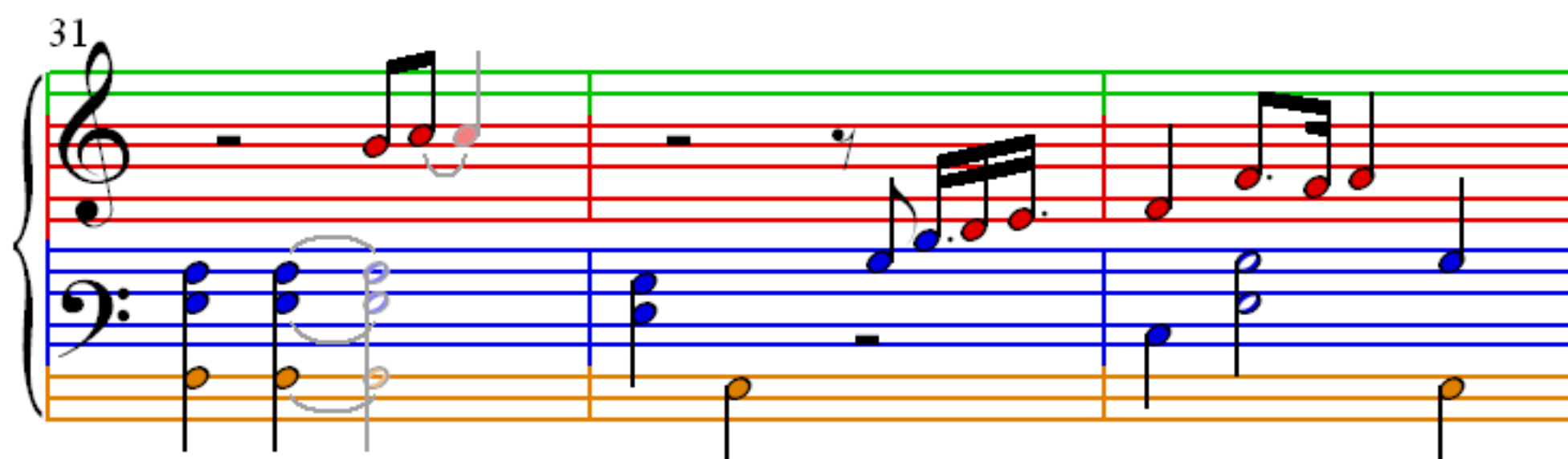
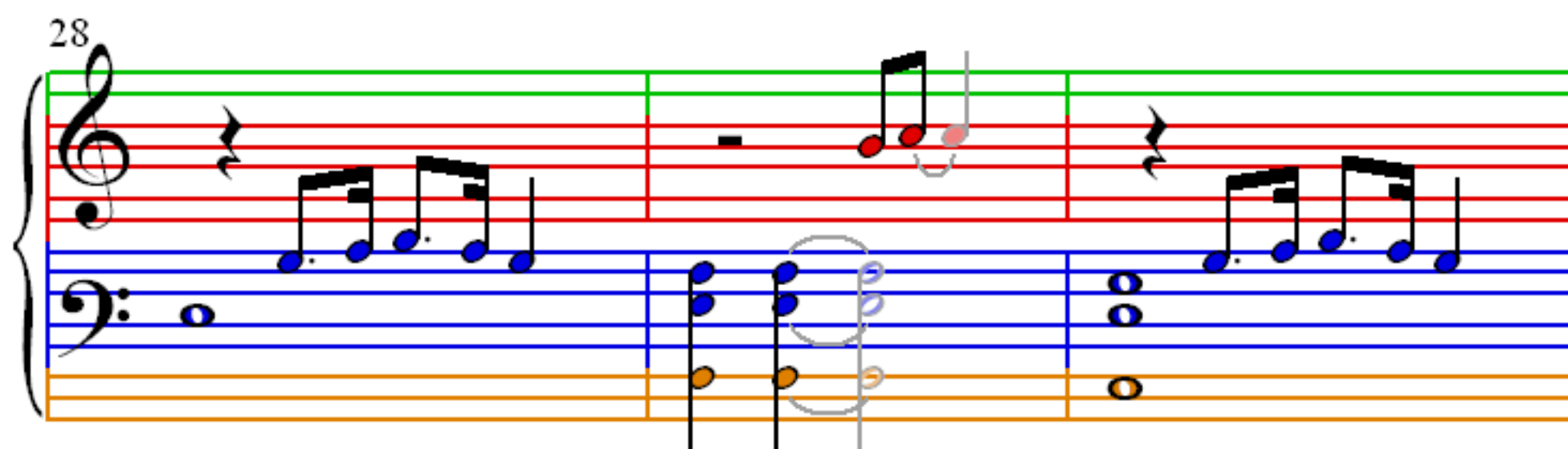
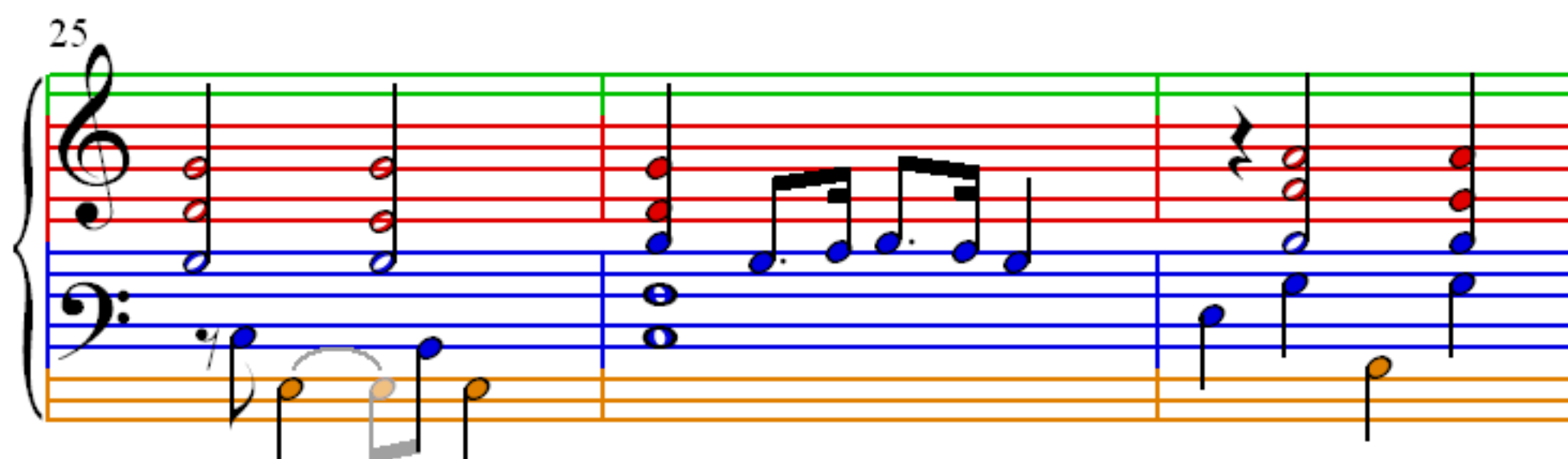
Measures 10-12 of the piano introduction. The treble clef staff continues the melody. The bass clef staff continues the accompaniment. Measure 12 ends with a double bar line.

12

14

16

19



34

34

43

The musical score for Example 1, measures 43-45, is shown. The score is in 3/4 time and features a treble and bass staff. The treble staff has a green line and red lines. The bass staff has blue and orange lines. The music includes various notes, rests, and a fermata.

46

49

52

55