

Allemande

French Suite no. 5 in G major, BWV 816

J. S. Bach (1685–1750)

♩ = 60

3

5

7

Measure 7: Treble staff has eighth-note chords (F4, A4, C5). Bass staff has eighth notes (G3, F3, E3, D3).
 Measure 8: Treble staff has a half-note chord (F4, A4). Bass staff has a half-note chord (G3, F3).

9

Measure 9: Treble staff has a half-note chord (F4, A4). Bass staff has eighth notes (G3, F3, E3, D3).
 Measure 10: Treble staff has a half-note chord (F4, A4). Bass staff has a half-note chord (G3, F3).

11

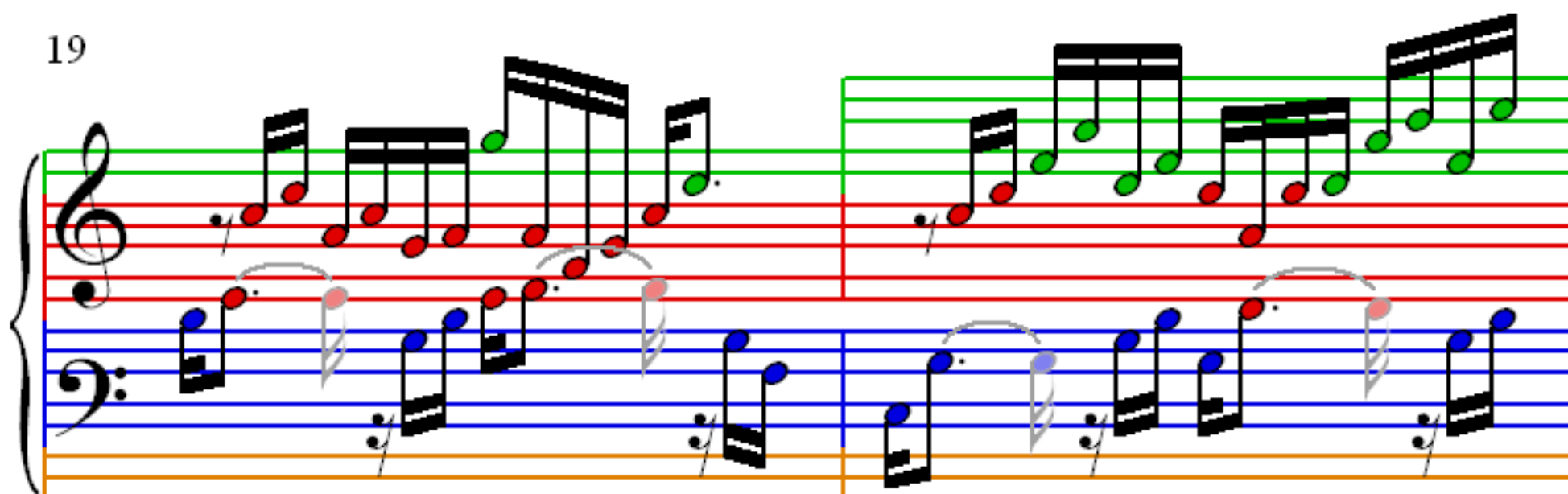
Measure 11: Treble staff has eighth-note chords (F4, A4, C5). Bass staff has eighth notes (G3, F3, E3, D3).
 Measure 12: Treble staff has a half-note chord (F4, A4). Bass staff has a half-note chord (G3, F3).

13

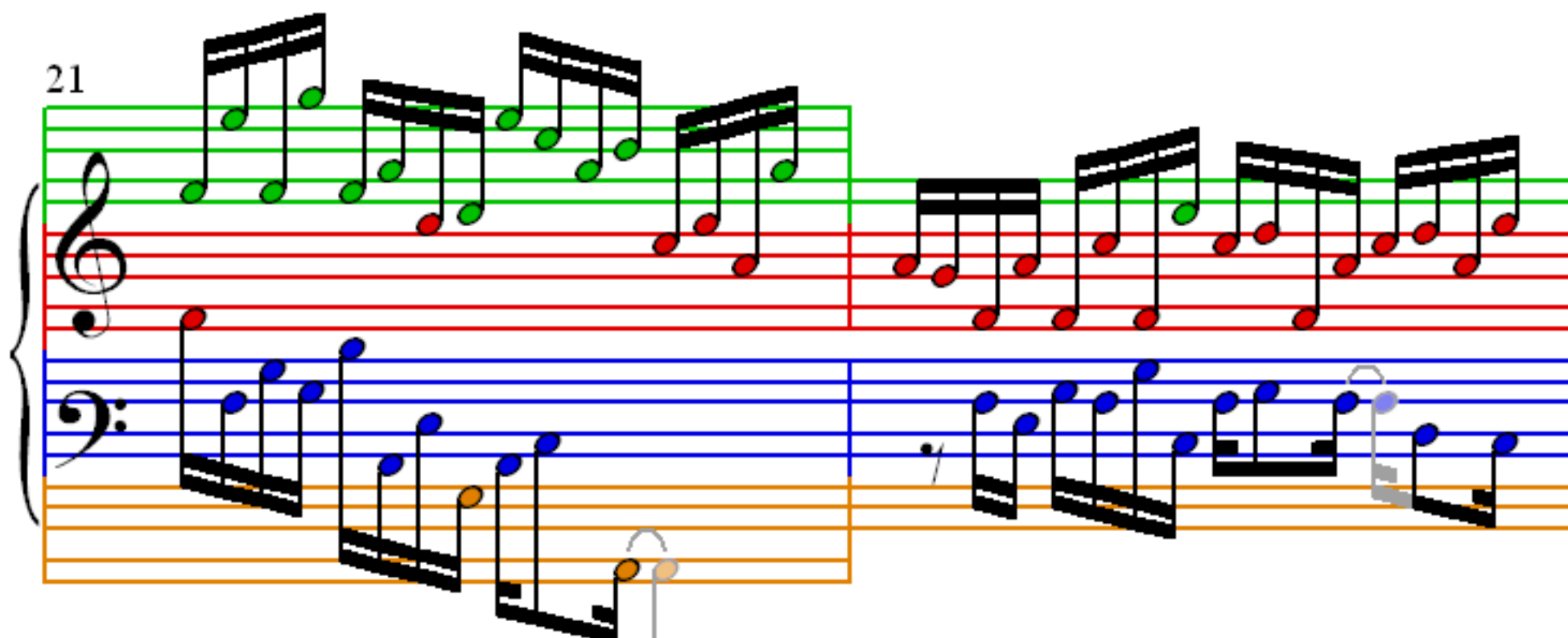
15

17

19



21



23

