

# Invention 6

$\text{♩} = 80$

J S Bach

1

Measures 1-2 of Invention 6. The treble clef staff (top) contains a series of eighth notes, with the first four measures of the first system highlighted in green. The bass clef staff (bottom) contains a series of eighth notes, with the first four measures of the first system highlighted in blue. The key signature is one flat (B-flat), and the time signature is 4/4.

3

Measures 3-4 of Invention 6. The treble clef staff (top) contains a series of eighth notes, with the first four measures of the second system highlighted in green. The bass clef staff (bottom) contains a series of eighth notes, with the first four measures of the second system highlighted in blue. The key signature is one flat (B-flat), and the time signature is 4/4.

5

Measures 5-6 of Invention 6. The treble clef staff (top) contains a series of eighth notes, with the first four measures of the third system highlighted in green. The bass clef staff (bottom) contains a series of eighth notes, with the first four measures of the third system highlighted in blue. The key signature is one flat (B-flat), and the time signature is 4/4.

7

9

11

13

Measures 13-14 of Invention 6. The treble staff has a green line and the bass staff has a blue line. The right hand plays a sequence of eighth notes, and the left hand plays a sequence of eighth notes. The notation is color-coded: red for the first measure, blue for the second, and green for the third.

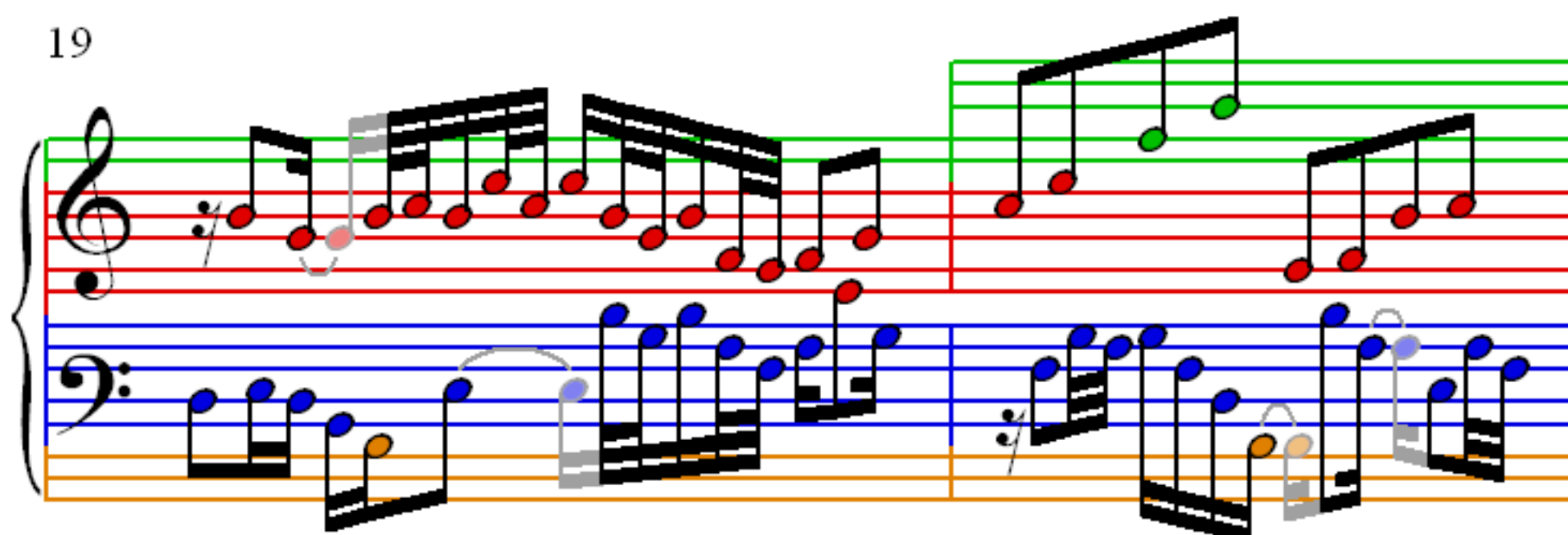
15

Measures 15-16 of Invention 6. The treble staff has a green line and the bass staff has a blue line. The right hand plays a sequence of eighth notes, and the left hand plays a sequence of eighth notes. The notation is color-coded: red for the first measure, blue for the second, and green for the third.

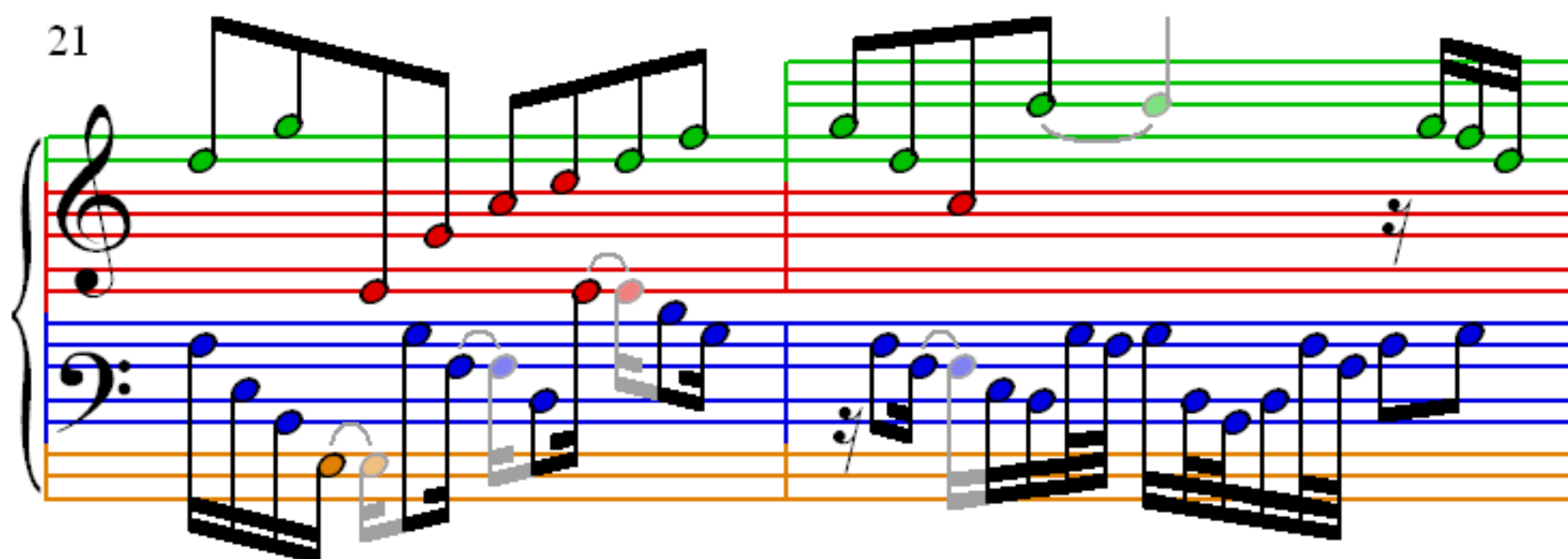
17

Measures 17-18 of Invention 6. The treble staff has a green line and the bass staff has a blue line. The right hand plays a sequence of eighth notes, and the left hand plays a sequence of eighth notes. The notation is color-coded: red for the first measure, blue for the second, and green for the third.

19



21



23

