

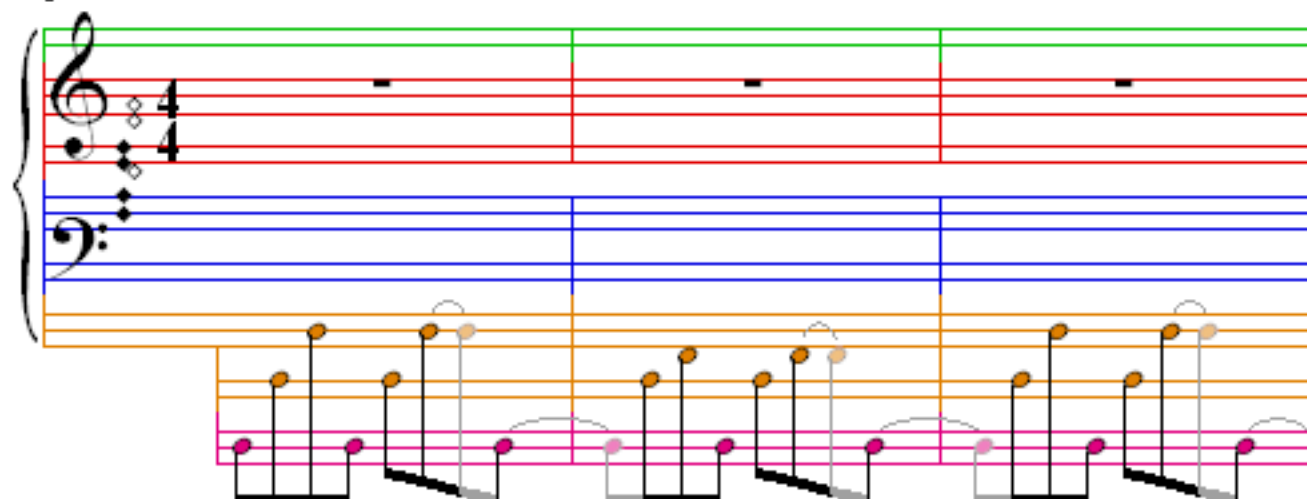
Peanuts Theme

Linus and Lucy

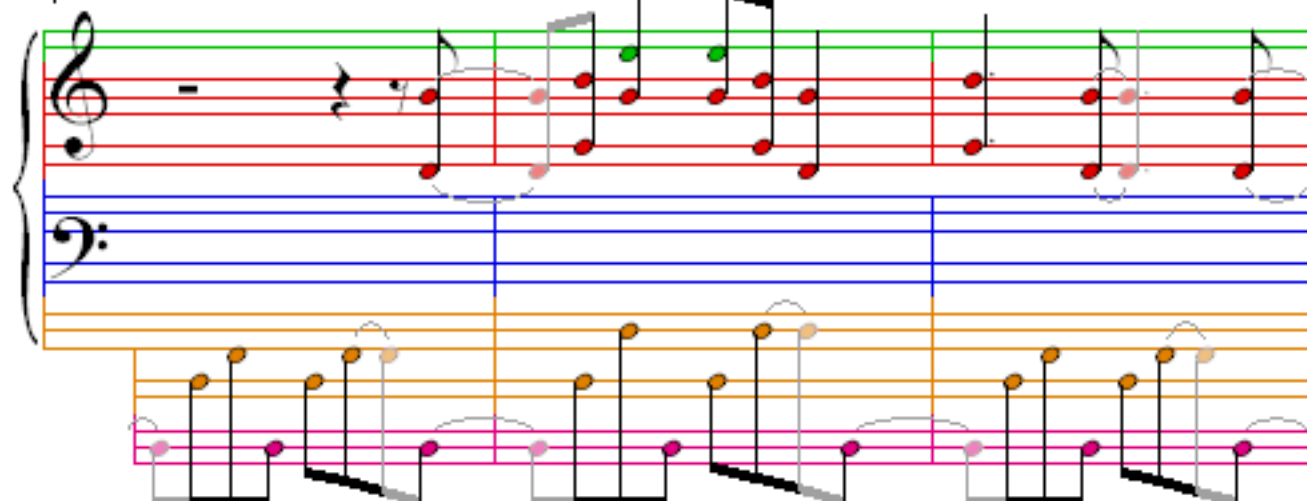
Vince" Guaraldi

$\text{♩} = 175$

1



4



7

The image shows a musical score for the song 'The Rose Tree'. It consists of three staves. The top staff is a treble clef with a key signature of one flat (B-flat) and a 4/4 time signature. The melody is written in black ink with red and green accents. The middle staff is a bass clef with a blue line. The bottom staff is a piano accompaniment with orange and pink notes. The score is divided into four measures by vertical bar lines. The first measure contains a treble clef, a key signature of one flat, and a 4/4 time signature. The second measure contains a treble clef, a key signature of one flat, and a 4/4 time signature. The third measure contains a treble clef, a key signature of one flat, and a 4/4 time signature. The fourth measure contains a treble clef, a key signature of one flat, and a 4/4 time signature.

[illegible]

13

The musical score for Example 13 consists of two staves. The upper staff is a treble clef staff with a green line at the top and a red line at the bottom. It contains several measures of music, including a half note, a quarter note, and a half note, with some notes tied across measures. The lower staff is a bass clef staff with a blue line at the top and a pink line at the bottom. It contains several measures of music, including a half note, a quarter note, and a half note, with some notes tied across measures. The score is written in a standard musical notation style with various note values and rests.

16

Measures 16-18 of the Peanuts Theme. The system consists of three staves. The top staff is a treble clef with a red key signature and a green line. It contains a melody of eighth and quarter notes, with some notes highlighted in green. The middle staff is a bass clef with a blue key signature and a blue line. It contains a bass line of eighth and quarter notes, with some notes highlighted in blue. The bottom staff is a grand staff with a pink key signature and a pink line. It contains a bass line of eighth and quarter notes, with some notes highlighted in pink. The measures are grouped by vertical bar lines.

19

Measures 19-21 of the Peanuts Theme. The system consists of three staves. The top staff is a treble clef with a red key signature and a green line. It contains a melody of eighth and quarter notes, with some notes highlighted in green. The middle staff is a bass clef with a blue key signature and a blue line. It contains a bass line of eighth and quarter notes, with some notes highlighted in blue. The bottom staff is a grand staff with a pink key signature and a pink line. It contains a bass line of eighth and quarter notes, with some notes highlighted in pink. The measures are grouped by vertical bar lines.

22

Measures 22-24 of the Peanuts Theme. The system consists of three staves. The top staff is a treble clef with a red key signature and a green line. It contains a melody of eighth and quarter notes, with some notes highlighted in green. The middle staff is a bass clef with a blue key signature and a blue line. It contains a bass line of eighth and quarter notes, with some notes highlighted in blue. The bottom staff is a grand staff with a pink key signature and a pink line. It contains a bass line of eighth and quarter notes, with some notes highlighted in pink. The measures are grouped by vertical bar lines.

25

Measures 25-27 of the Peanuts Theme. The treble clef staff features a melody of eighth notes, with measures 25 and 27 containing beamed sixteenth notes. The bass clef staff provides a harmonic accompaniment with eighth notes and rests. The notes are color-coded: purple for the melody, green for the treble accompaniment, blue for the bass melody, and orange for the bass accompaniment.

28

Measures 28-30 of the Peanuts Theme. The treble clef staff continues the melody with eighth notes and beamed sixteenth notes. The bass clef staff features a more active accompaniment with eighth notes and rests. The notes are color-coded: purple for the melody, green for the treble accompaniment, blue for the bass melody, and orange for the bass accompaniment.

31

Measures 31-33 of the Peanuts Theme. The treble clef staff features a melody of eighth notes, with measures 31 and 33 containing beamed sixteenth notes. The bass clef staff provides a harmonic accompaniment with eighth notes and rests. The notes are color-coded: purple for the melody, green for the treble accompaniment, blue for the bass melody, and orange for the bass accompaniment.

34

This system contains measures 34, 35, and 36. The treble clef staff features a melody with eighth and quarter notes, some marked with green dots. The bass clef staff has a steady eighth-note accompaniment. A pink line of notes is visible below the bass staff, and a series of orange notes is written on a separate staff below that.

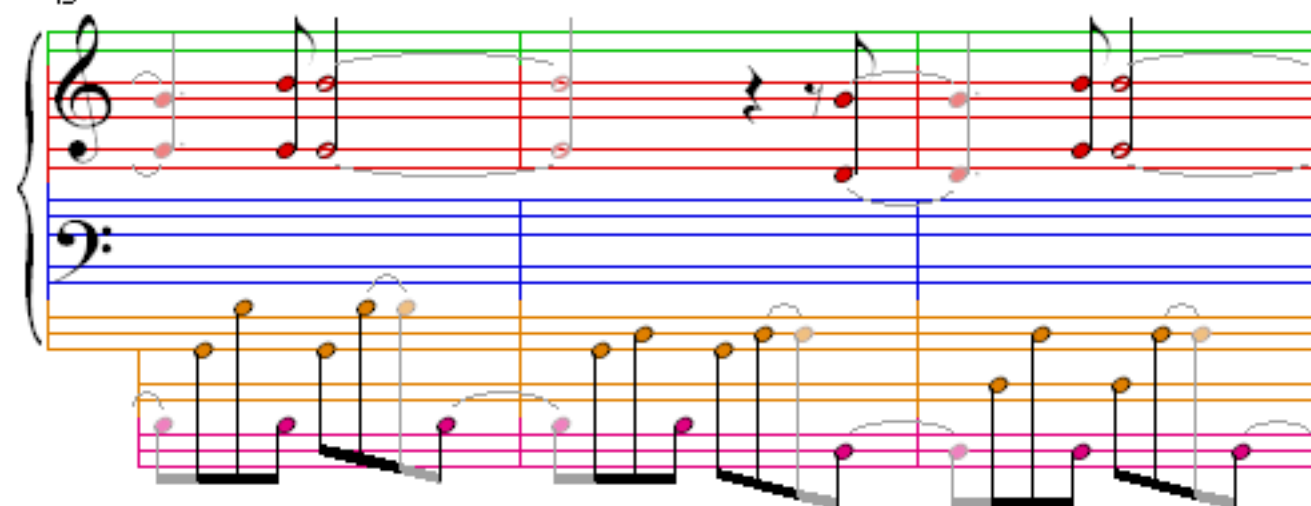
37

This system contains measures 37, 38, and 39. The treble clef staff continues the melody with various note values and rests. The bass clef staff maintains the eighth-note accompaniment. The pink line and the lower orange staff continue their respective parts.

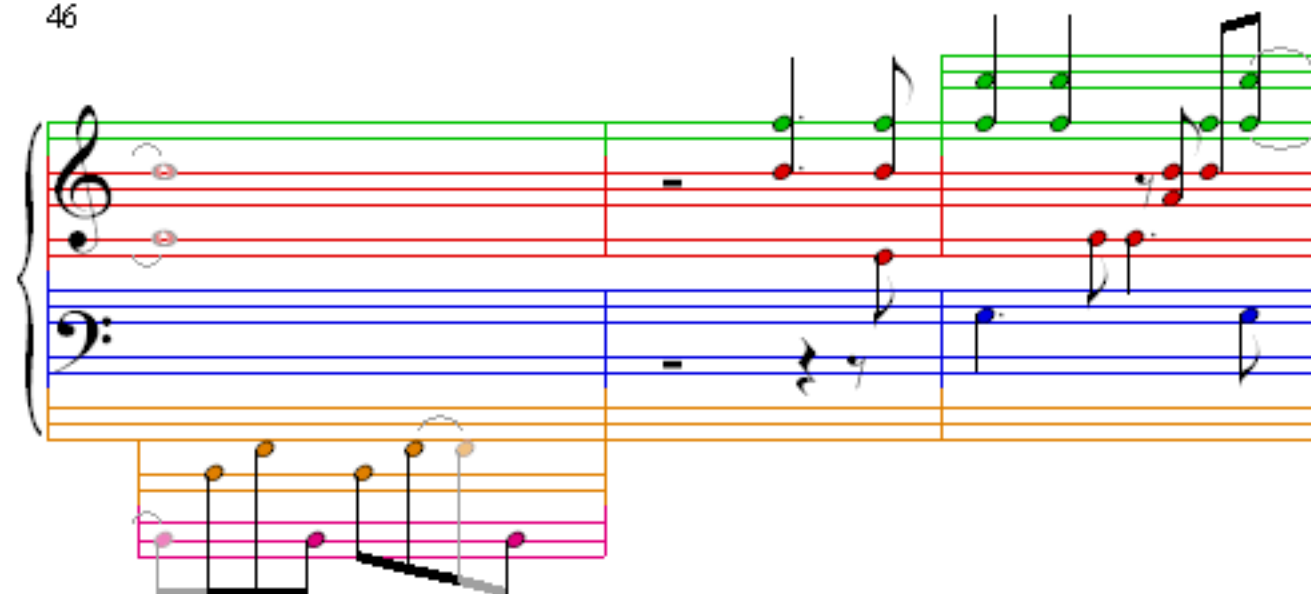
40

This system contains measures 40, 41, and 42. The treble clef staff shows the final notes of the system, including some rests. The bass clef staff continues the accompaniment. The pink line and the lower orange staff conclude their parts in this system.

43



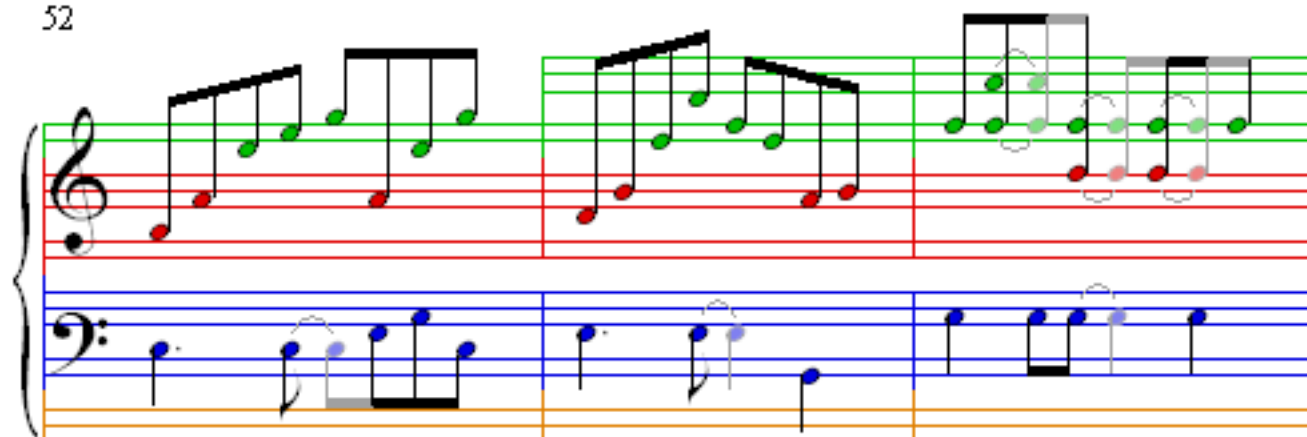
46



49



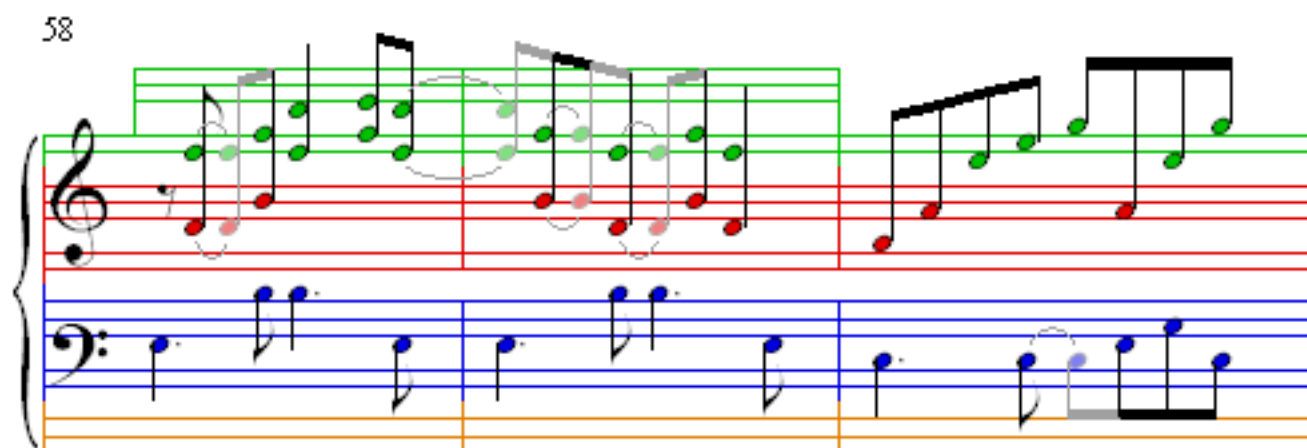
52



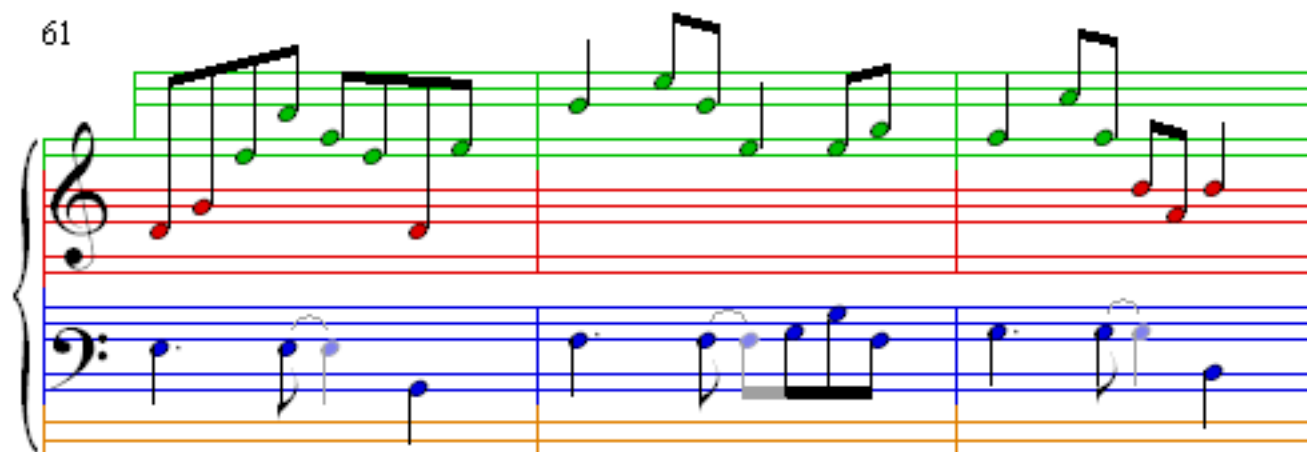
55



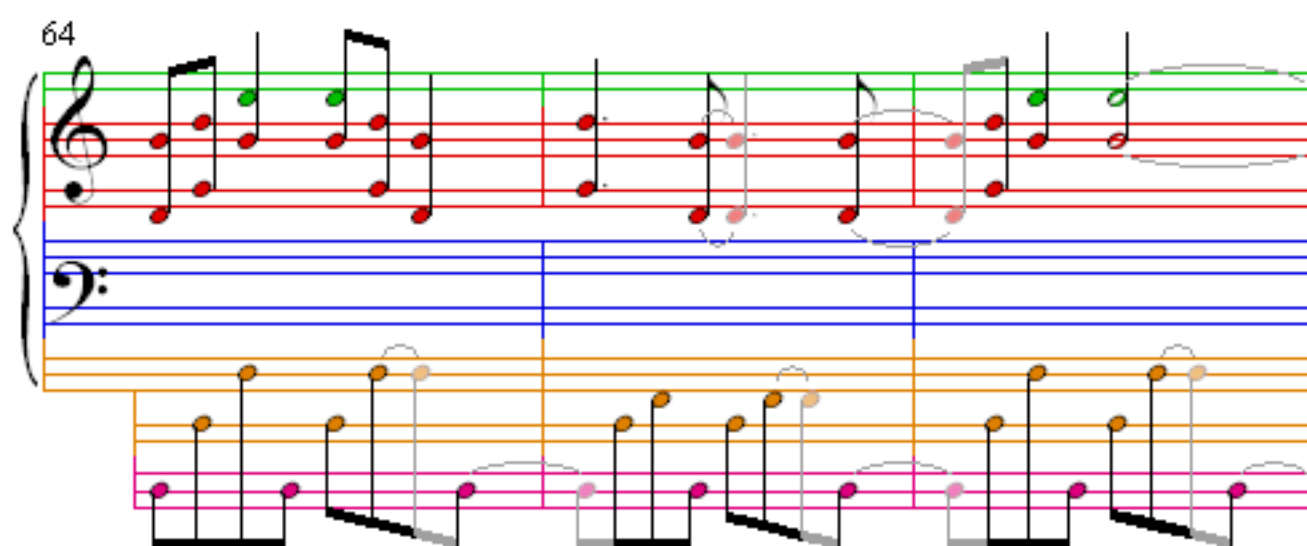
58



61



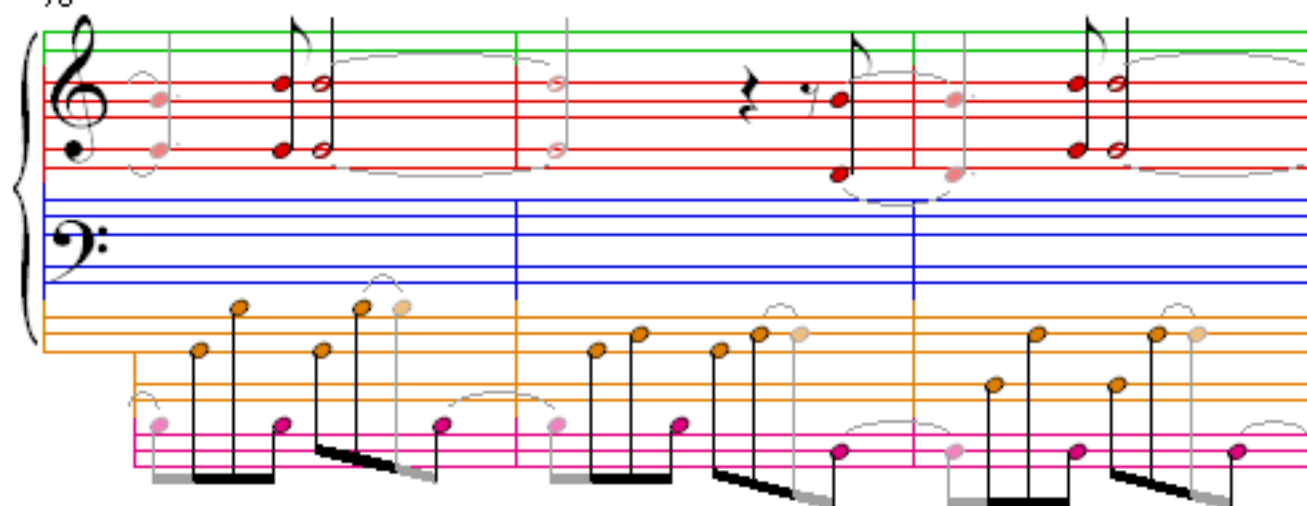
64



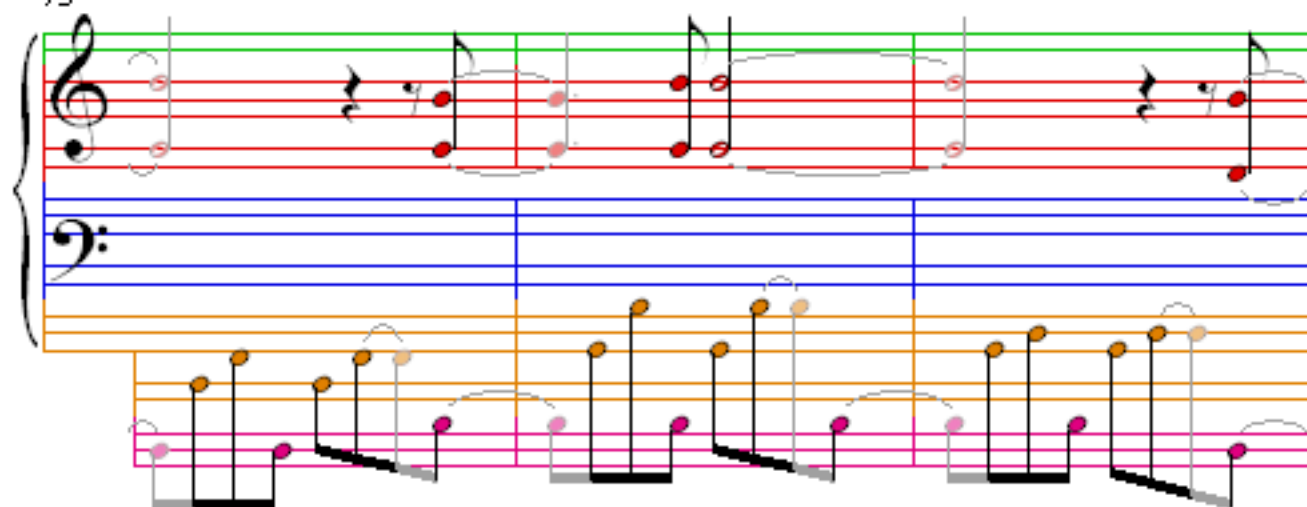
67



70



73



76

