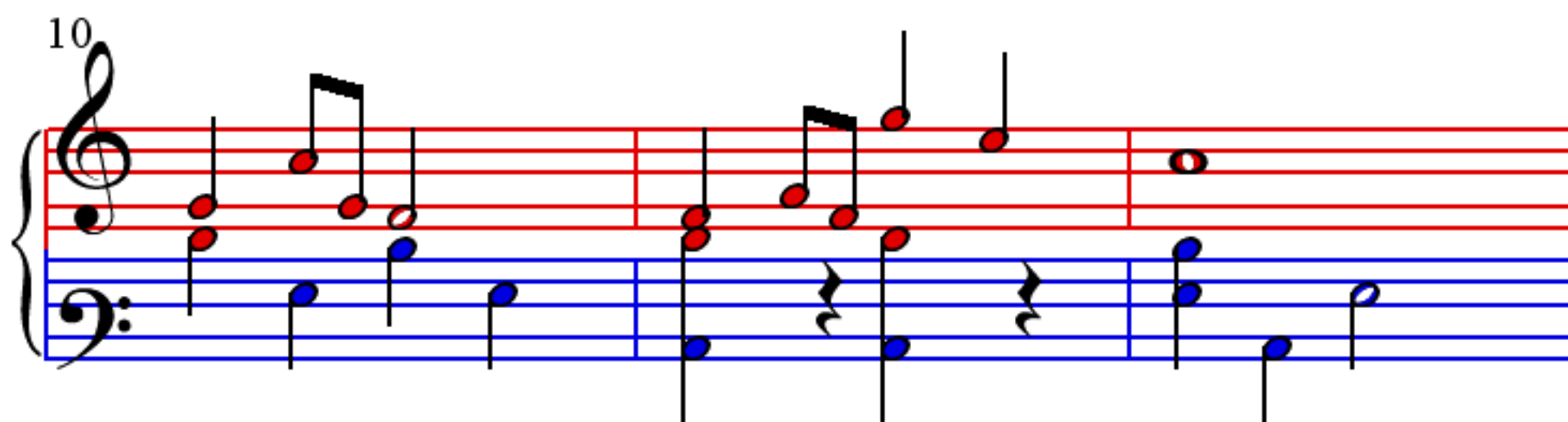
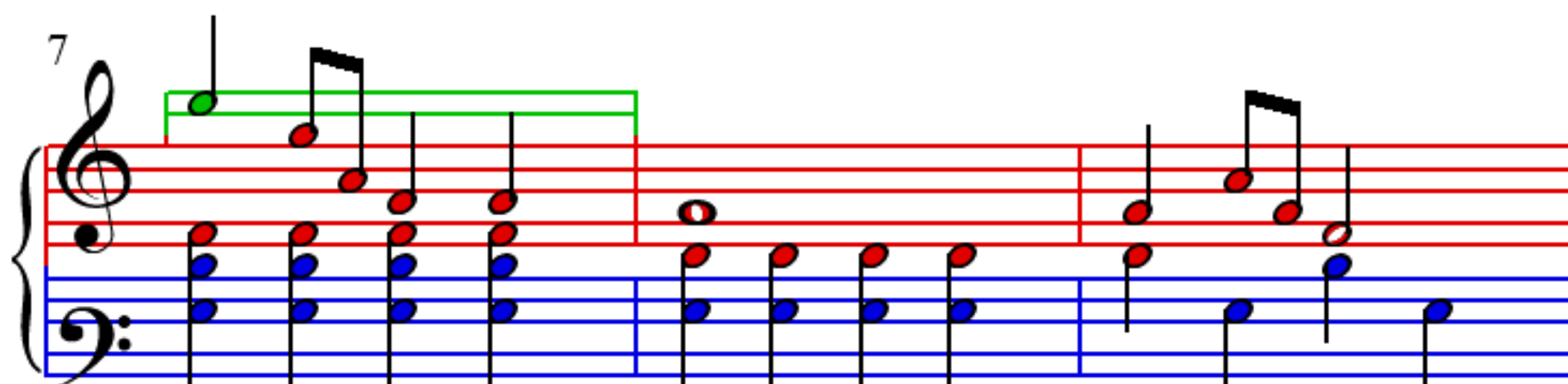
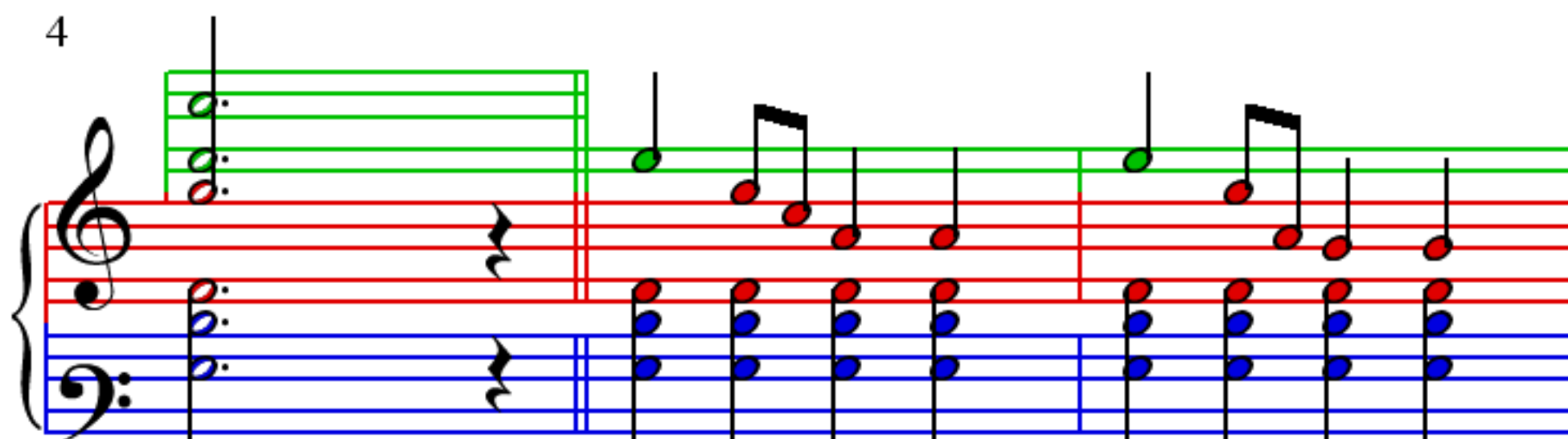
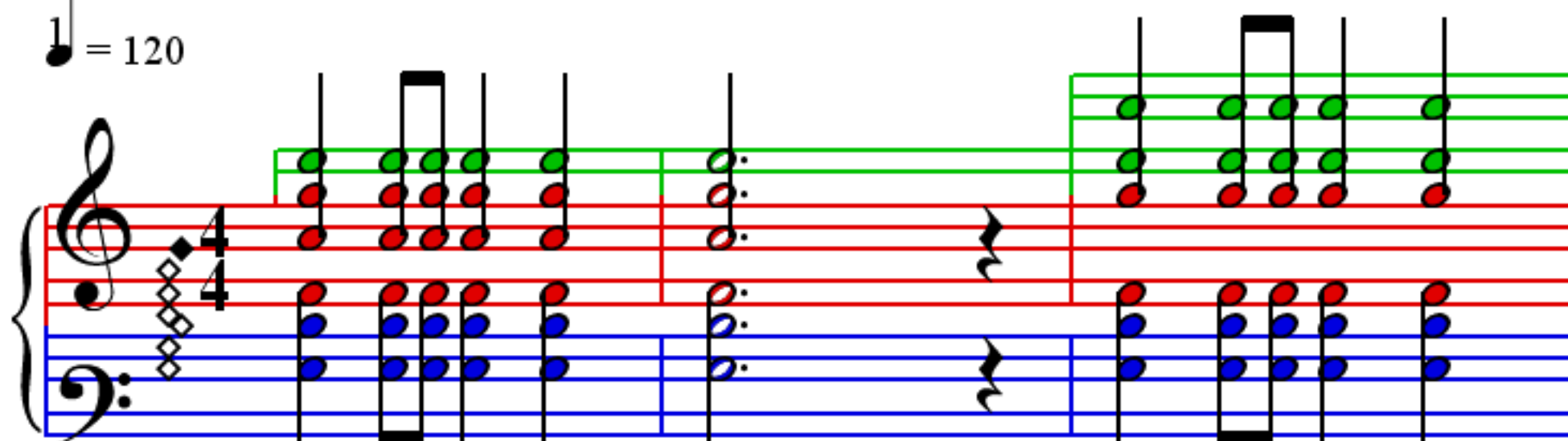


# Olympic Games

$\text{♩} = 120$



13

Measures 13-16. Treble clef has a green line above the staff. Bass clef has an orange line below the staff. Notes are colored red and blue.

17

Measures 17-20. Treble clef has a green line above the staff. Bass clef has an orange line below the staff. Notes are colored red and blue.

21

Measures 21-24. Treble clef has a green line above the staff. Bass clef has an orange line below the staff. Notes are colored red and blue.

25

Measures 25-28. Treble clef has a green line above the staff. Bass clef has an orange line below the staff. Notes are colored red and blue.