

Allegro Vivace

Stephen Heller

1

Measures 1-3 of the piece. The key signature is one sharp (F#) and the time signature is 2/4. The first system shows the beginning of the melody in the right hand and a supporting bass line in the left hand. The notes are color-coded: red for the melody and blue for the bass line. An orange bracket highlights the first two measures of the bass line.

3

Measures 4-6. The melody continues with a rising eighth-note pattern. The right hand features a series of eighth notes, some of which are color-coded green. The left hand continues with a steady eighth-note accompaniment. An orange bracket highlights the first two measures of the bass line.

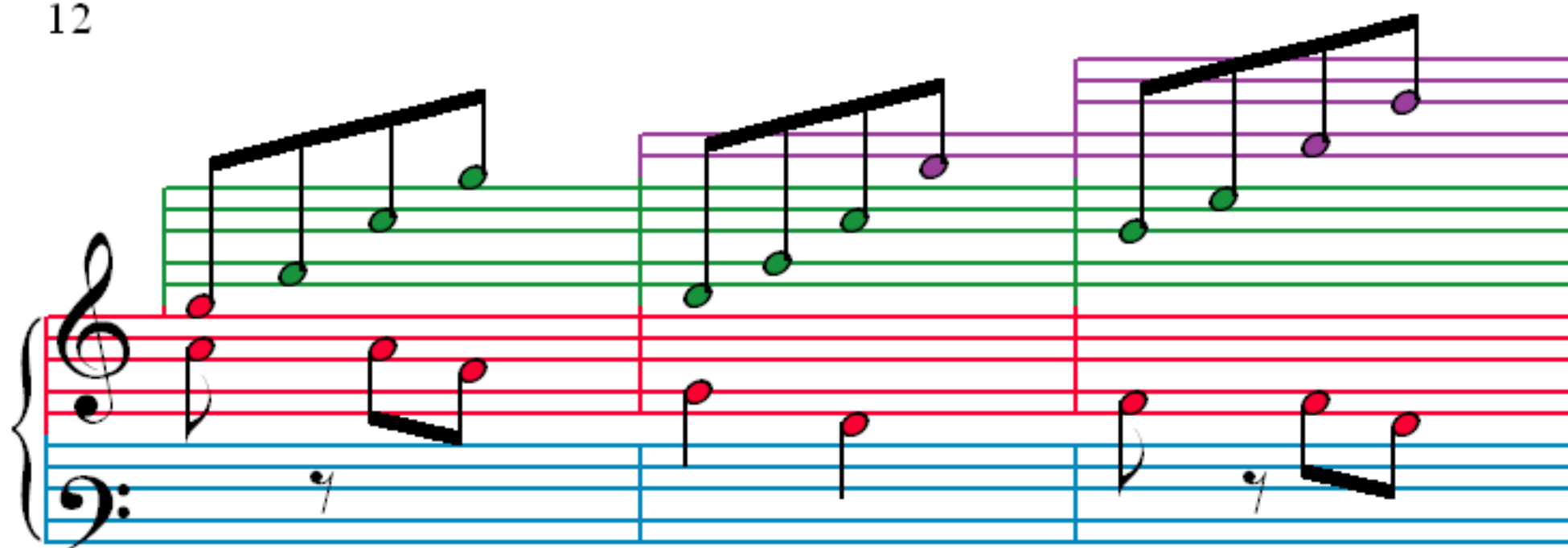
6

Measures 7-9. The melody continues with a rising eighth-note pattern. The right hand features a series of eighth notes, some of which are color-coded green. The left hand continues with a steady eighth-note accompaniment. An orange bracket highlights the first two measures of the bass line.

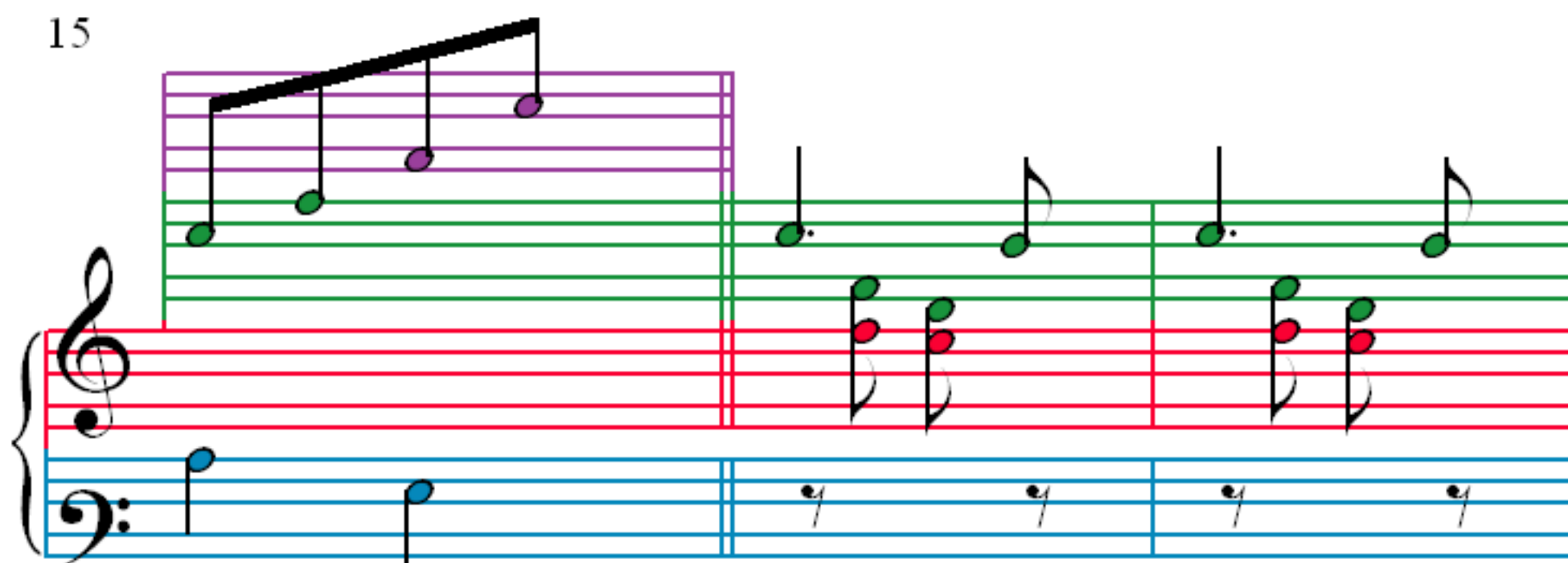
9

Measures 10-12. The melody continues with a rising eighth-note pattern. The right hand features a series of eighth notes, some of which are color-coded green. The left hand continues with a steady eighth-note accompaniment.

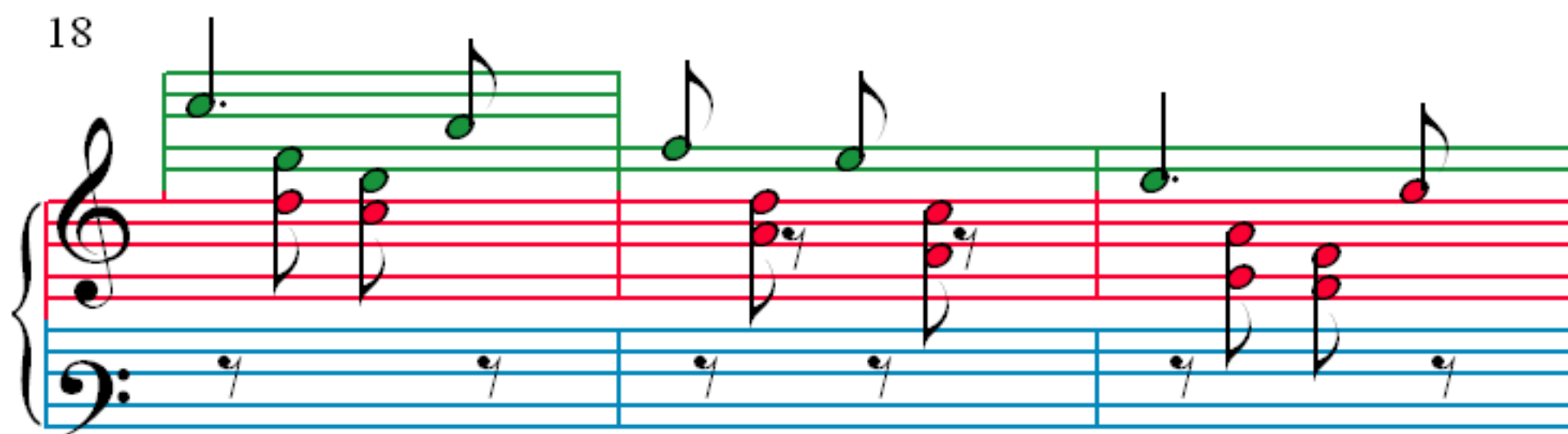
12



15

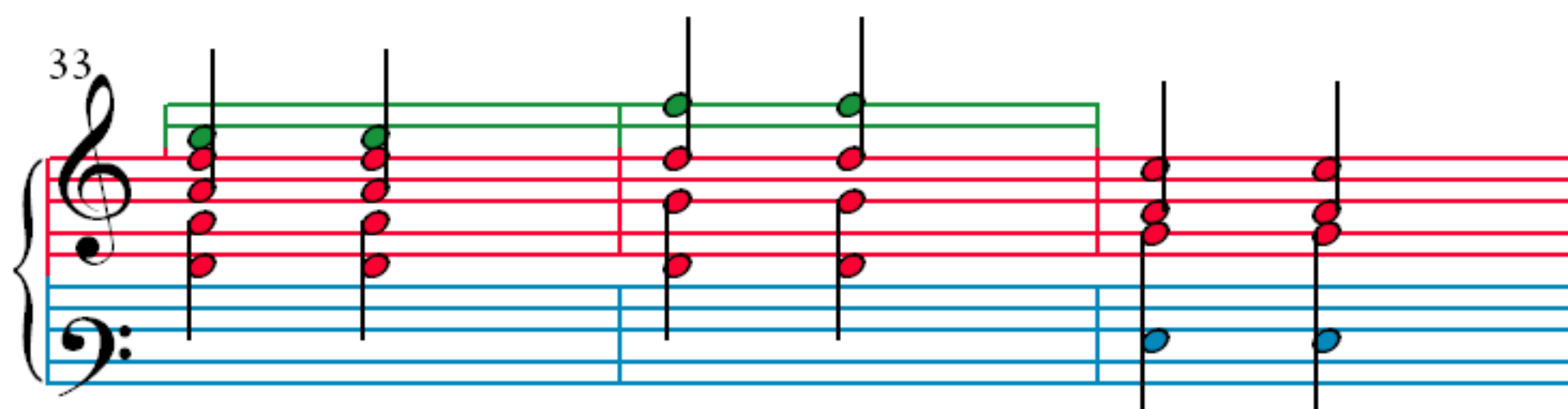
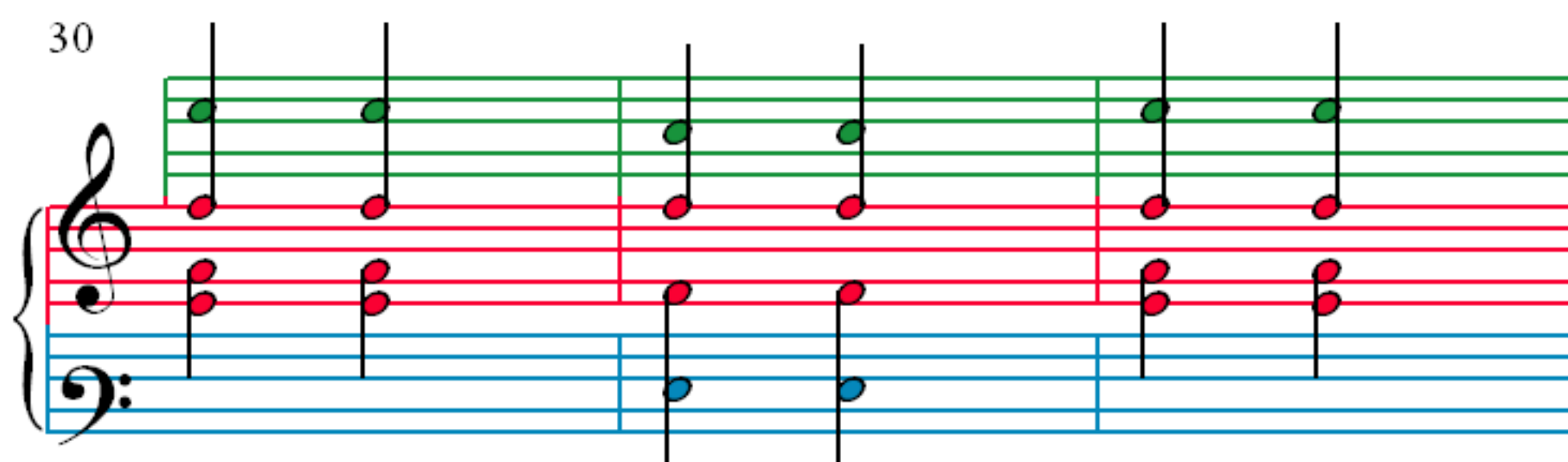
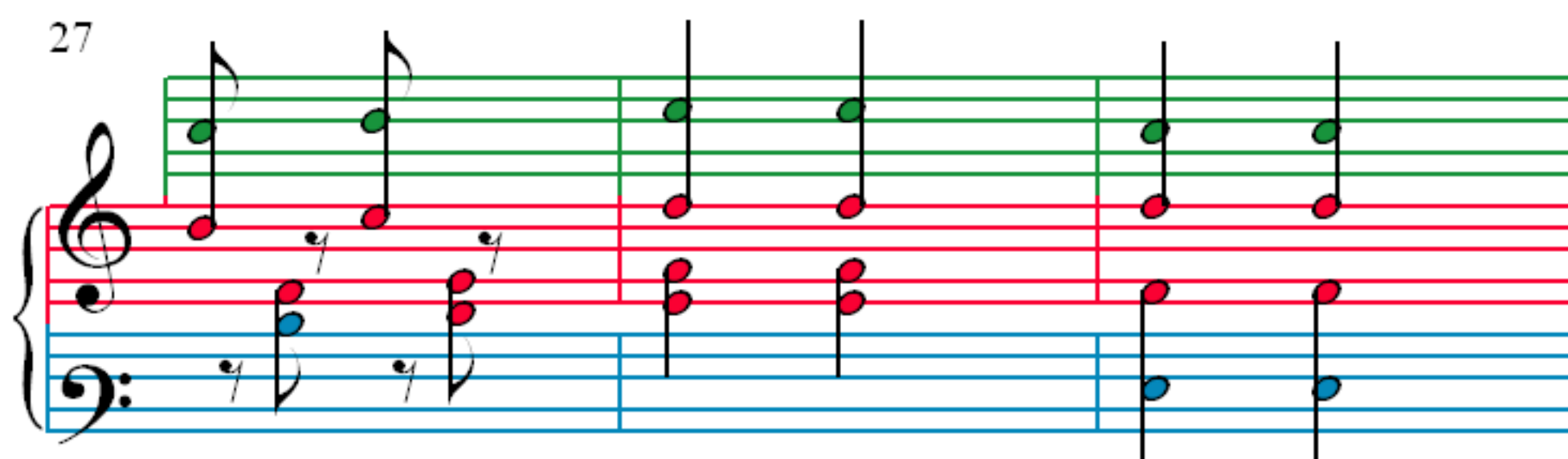


18



21





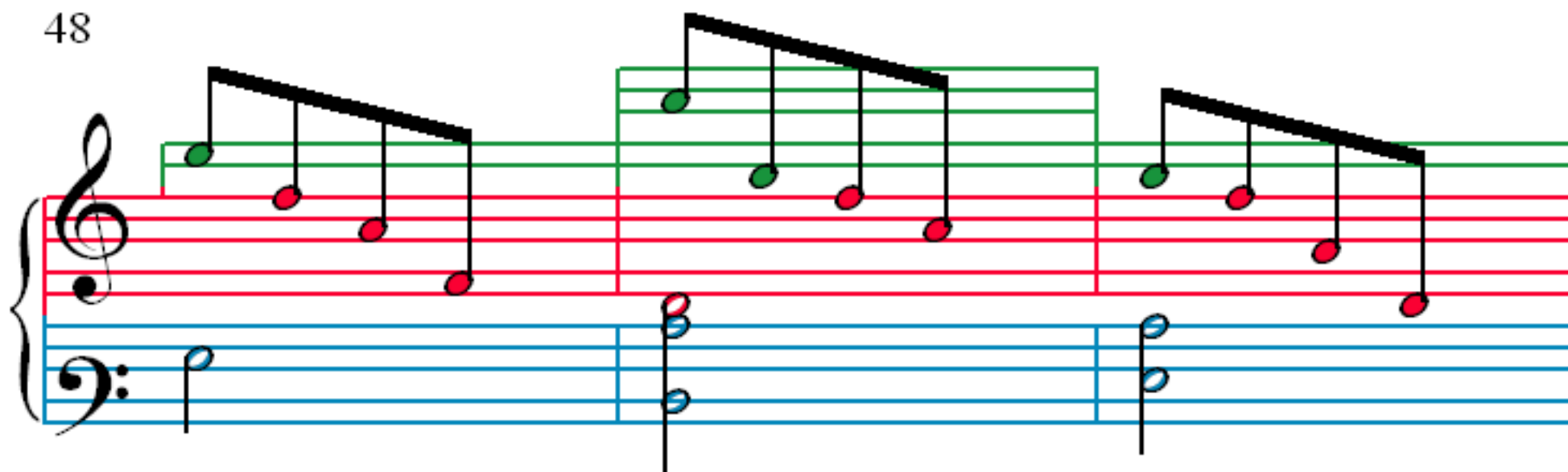
36

39

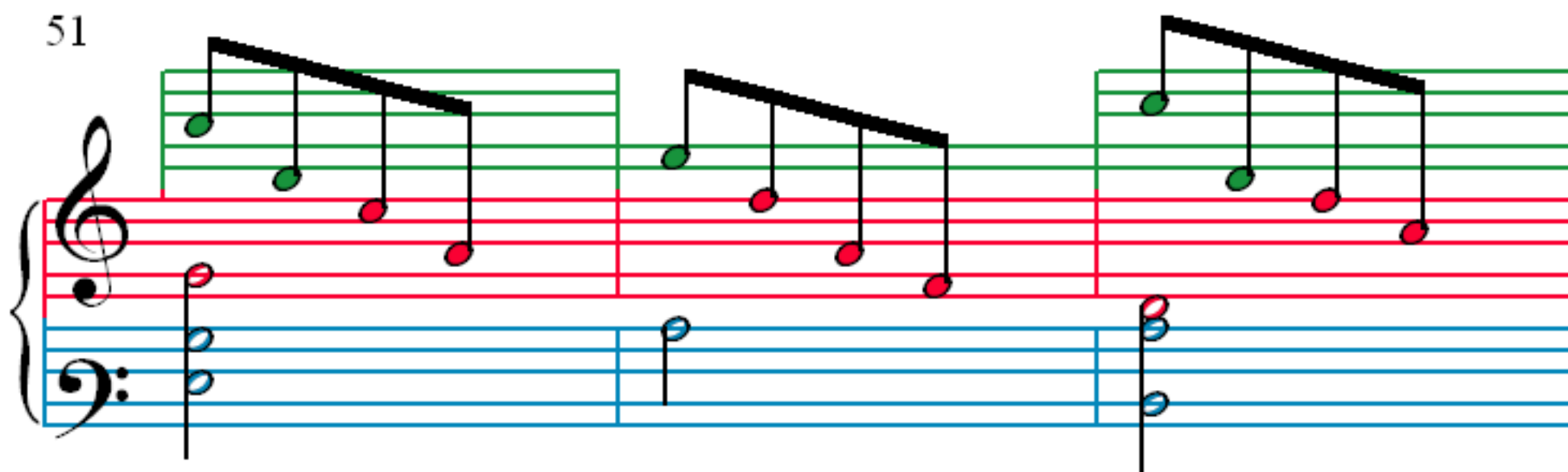
42

45

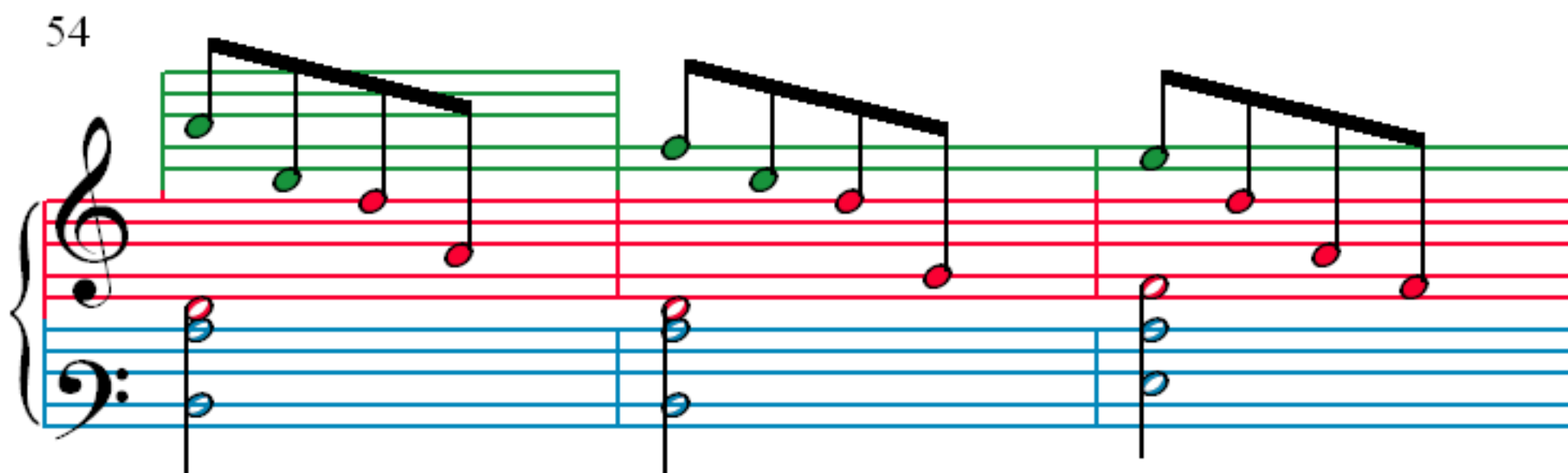
48



51

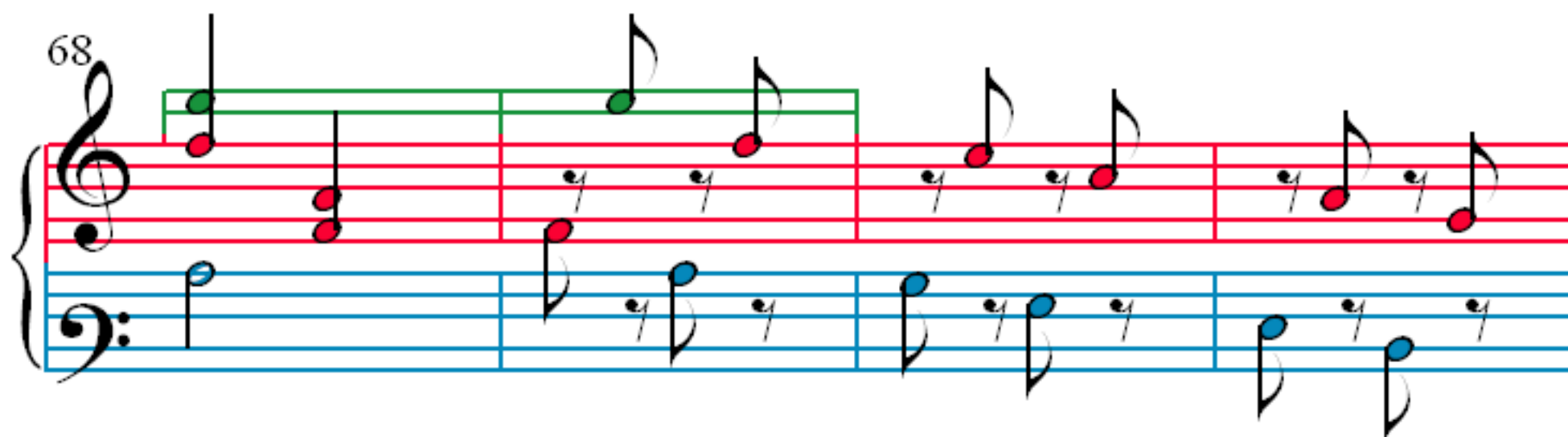
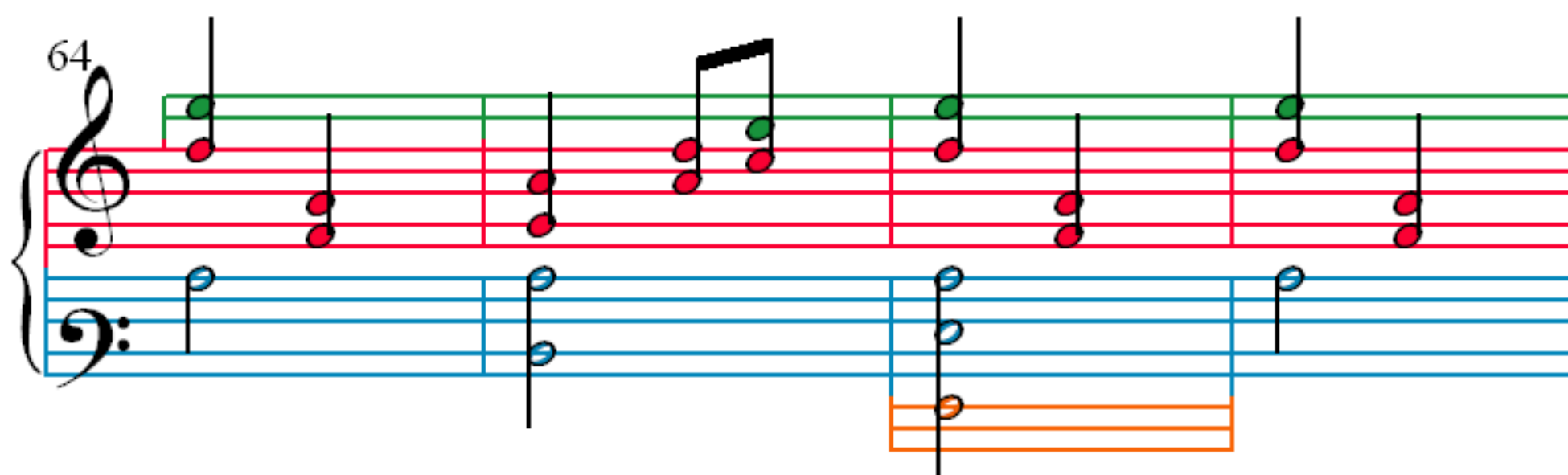
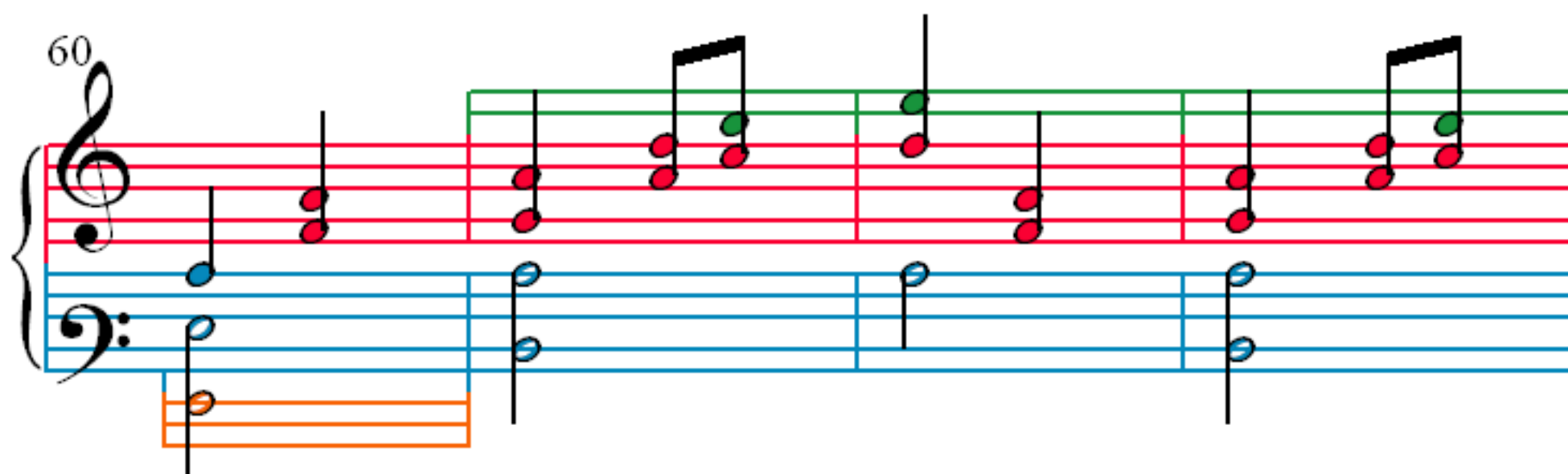


54



57





76

Measures 76-78. Treble clef has red notes, bass clef has blue notes. Measure 77 has an orange staff below the bass line.

79

Measures 79-81. Treble clef has red notes, bass clef has blue notes. Measure 80 has an orange staff below the bass line.

82

Measures 82-84. Treble clef has red notes, bass clef has blue notes. Measure 83 has an orange staff below the bass line.

85

Measures 85-87. Treble clef has red notes, bass clef has blue notes.

88

Measures 88-90 of a musical score. The system consists of a grand staff with a treble clef and a bass clef. The treble staff has a green staff line above it. The bass staff has a blue staff line below it. The treble staff contains a melodic line with green and purple notes, some of which are beamed together. The bass staff contains a bass line with red and blue notes, including some beamed eighth notes. The measures are separated by vertical bar lines.

91

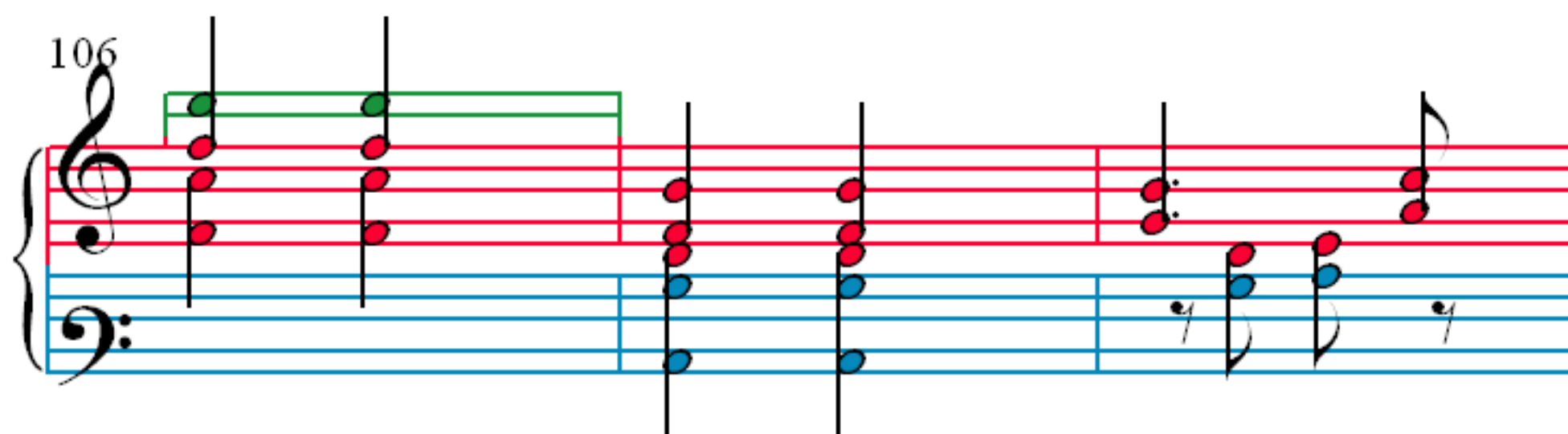
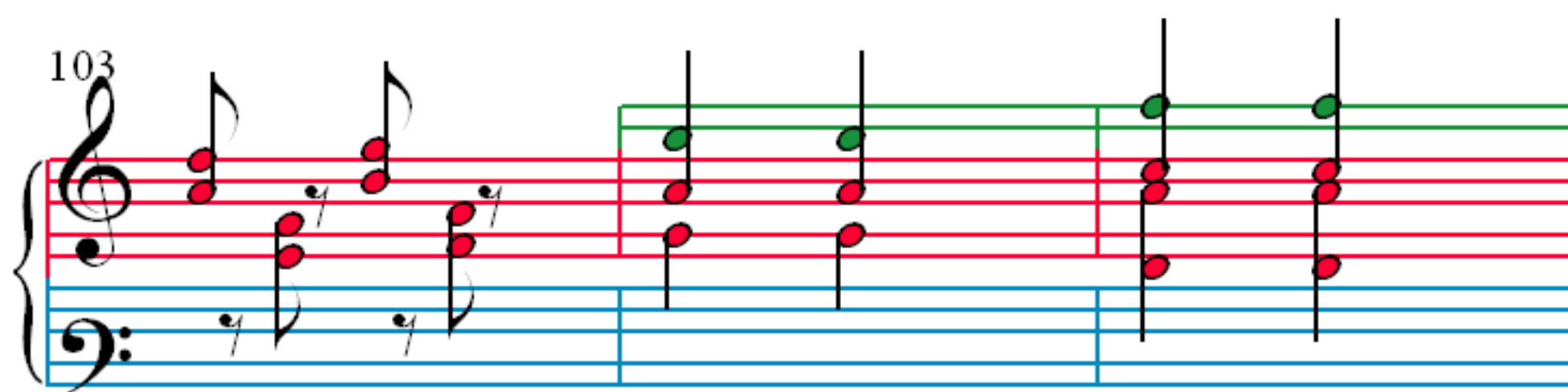
Measures 91-93 of a musical score. The system consists of a grand staff with a treble clef and a bass clef. The treble staff has a green staff line above it. The bass staff has a blue staff line below it. The treble staff contains a melodic line with green and purple notes, some of which are beamed together. The bass staff contains a bass line with red and blue notes, including some beamed eighth notes. The measures are separated by vertical bar lines.

94

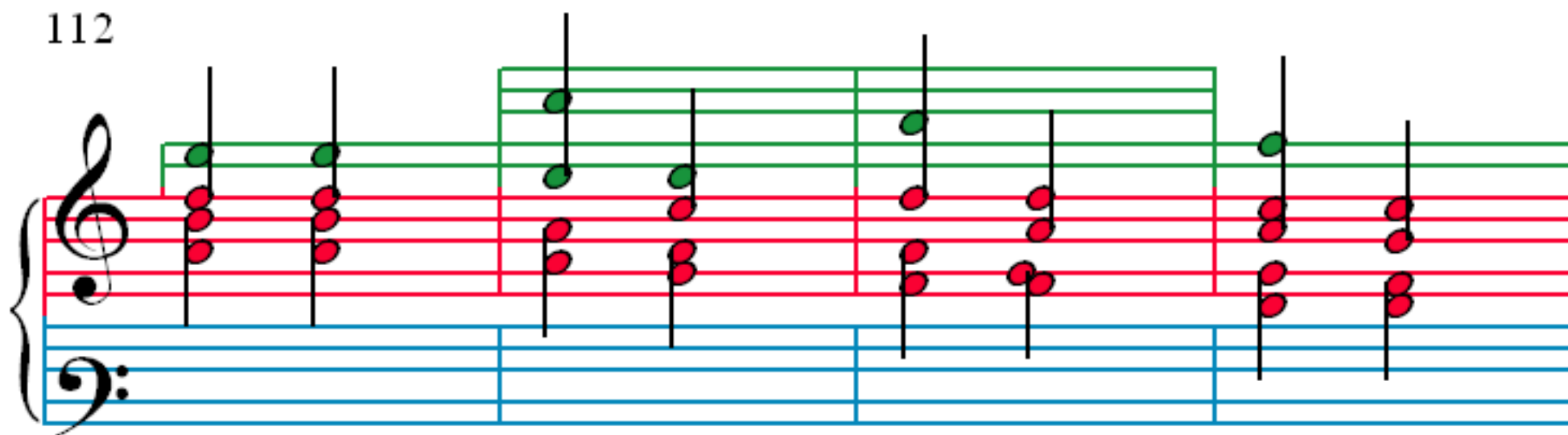
Measures 94-96 of a musical score. The system consists of a grand staff with a treble clef and a bass clef. The treble staff has a green staff line above it. The bass staff has a blue staff line below it. The treble staff contains a melodic line with green and red notes, some of which are beamed together. The bass staff contains a bass line with red and blue notes, including some beamed eighth notes. The measures are separated by vertical bar lines.

97

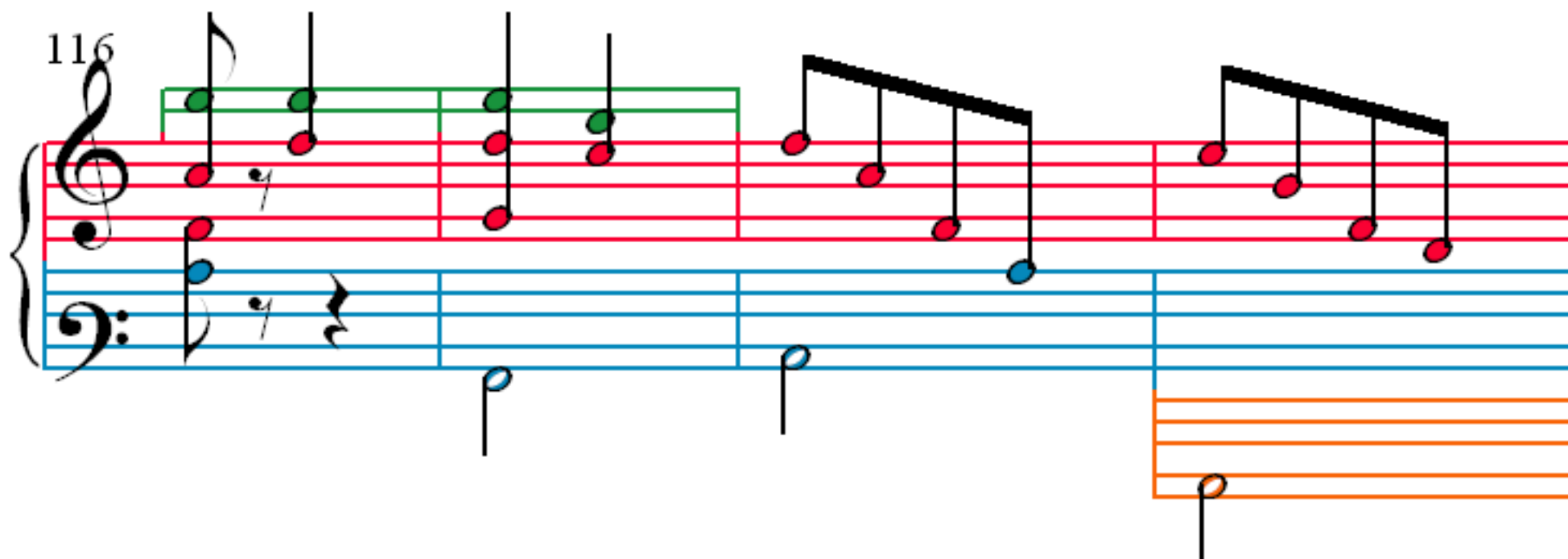
Measures 97-100 of a musical score. The system consists of a grand staff with a treble clef and a bass clef. The treble staff has a green staff line above it. The bass staff has a blue staff line below it. The treble staff contains a melodic line with green and red notes, some of which are beamed together. The bass staff contains a bass line with red and blue notes, including some beamed eighth notes. The measures are separated by vertical bar lines.



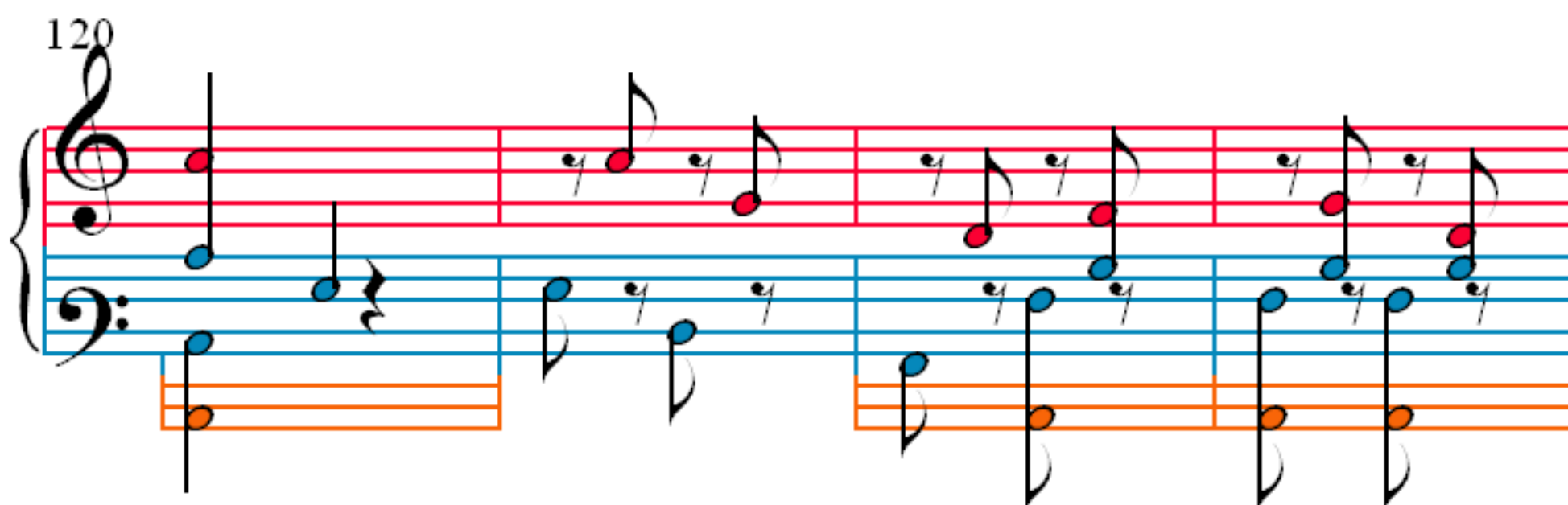
112



116



120



124



128

Measures 128-130. The system features three staves: a grand staff (treble and bass clefs) and a single staff below the bass clef. The grand staff has a red treble staff and a blue bass staff. The single staff below the bass clef is orange. The music consists of eighth and sixteenth notes, with some notes beamed together. The notes are colored red, blue, and green.

131

Measures 131-133. The system features a grand staff with a red treble staff and a blue bass staff. The music consists of eighth and sixteenth notes, with some notes beamed together. The notes are colored red and blue.

134

Measures 134-136. The system features a grand staff with a red treble staff and a blue bass staff, and a single orange staff below the bass clef. The music consists of eighth and sixteenth notes, with some notes beamed together. The notes are colored red, blue, and orange.

137

Measures 137-139. The system features a grand staff with a red treble staff and a blue bass staff, and a single orange staff below the bass clef. The music consists of eighth and sixteenth notes, with some notes beamed together. The notes are colored red, blue, and orange.

140

Measures 140-142. Treble clef: quarter notes. Bass clef: eighth notes. Lower staff: orange half notes.

143

Measures 143-145. Treble clef: quarter notes. Bass clef: eighth notes. Lower staff: orange half notes.

146

Measures 146-149. Treble clef: quarter notes. Bass clef: eighth notes. Lower staff: orange half notes.

150

Measures 150-153. Treble clef: half notes. Bass clef: half notes. Lower staff: orange half notes.