

3rd Part, Nr 8

Traditioner af Swenska Folk-Dansar

Traditional

1

Measures 1-2 of the 3rd Part, Nr 8. The music is in 2/4 time, indicated by a '2' over a '4' in the treble clef. The key signature has one sharp (F#). The notation is written on a grand staff with a treble and bass clef. The melody is in the treble clef, and the bass line is in the bass clef. The notes are colored: red for the first measure and blue for the second measure. A green line is drawn above the treble staff. An orange line is drawn below the bass staff, with a single note in the first measure.

3

Measures 3-4 of the 3rd Part, Nr 8. The notation continues on the grand staff. The melody is in the treble clef, and the bass line is in the bass clef. The notes are colored: red for the first measure and blue for the second measure. A green line is drawn above the treble staff. An orange line is drawn below the bass staff, with a single note in the first measure. A grey line is drawn above the treble staff in the second measure, indicating a continuation of the melody.

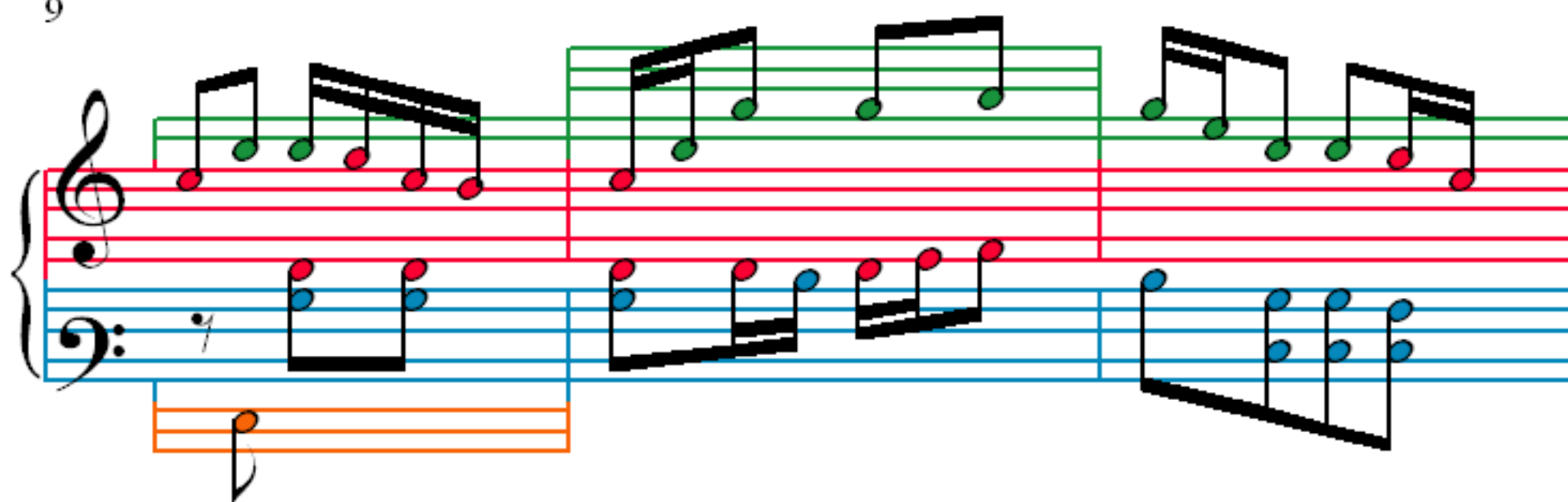
5

Measures 5-6 of the 3rd Part, Nr 8. The notation continues on the grand staff. The melody is in the treble clef, and the bass line is in the bass clef. The notes are colored: red for the first measure and blue for the second measure. A green line is drawn above the treble staff. An orange line is drawn below the bass staff, with a single note in the first measure. A grey line is drawn above the treble staff in the second measure, indicating a continuation of the melody.

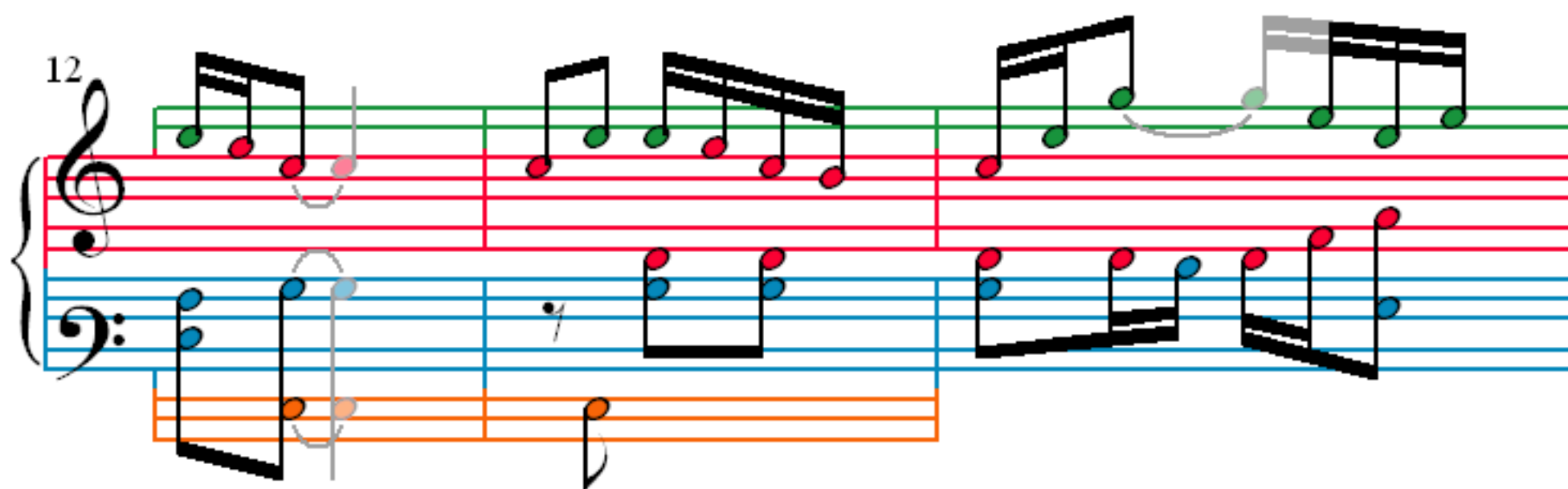
7

Measures 7-8 of the 3rd Part, Nr 8. The notation continues on the grand staff. The melody is in the treble clef, and the bass line is in the bass clef. The notes are colored: red for the first measure and blue for the second measure. A green line is drawn above the treble staff. An orange line is drawn below the bass staff, with a single note in the first measure. A grey line is drawn above the treble staff in the second measure, indicating a continuation of the melody.

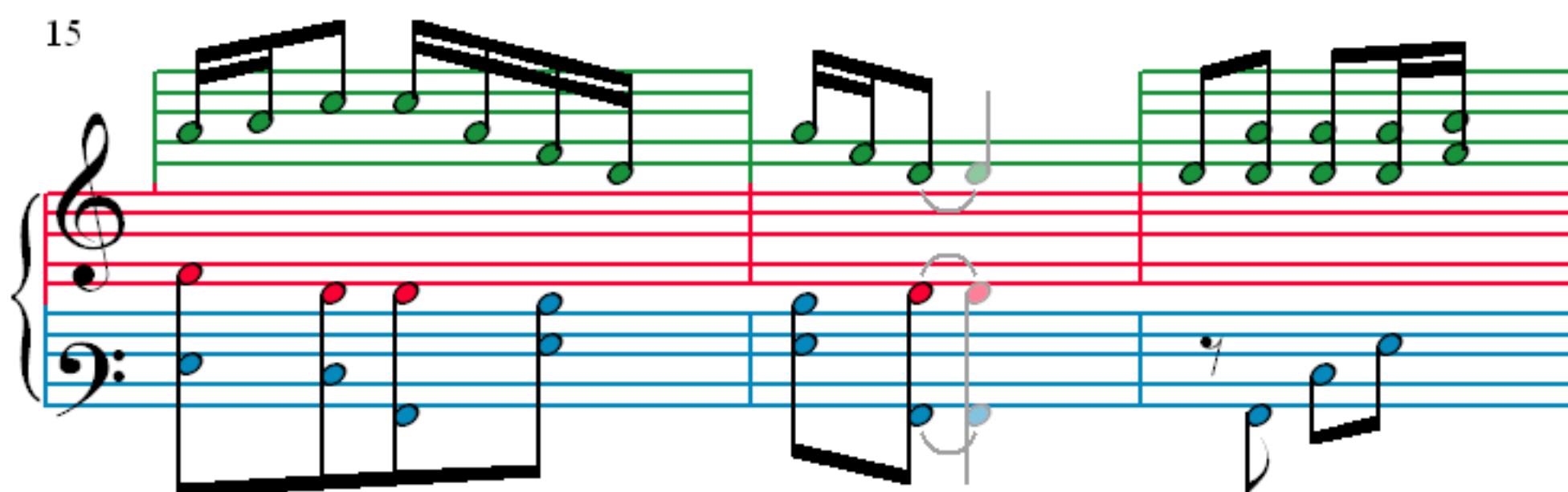
9



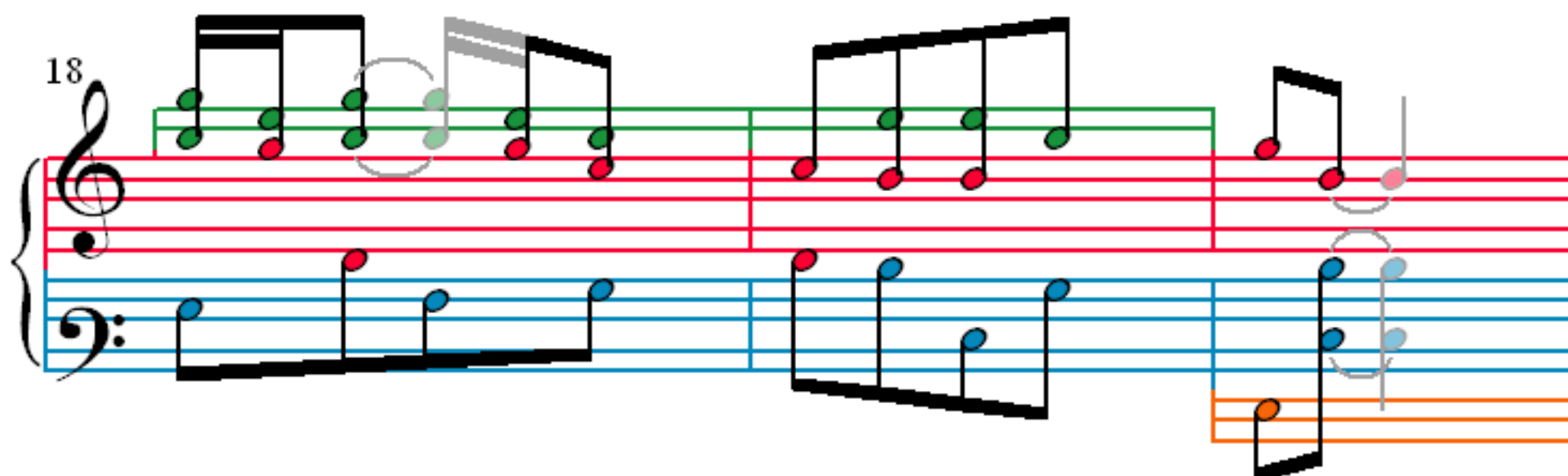
12



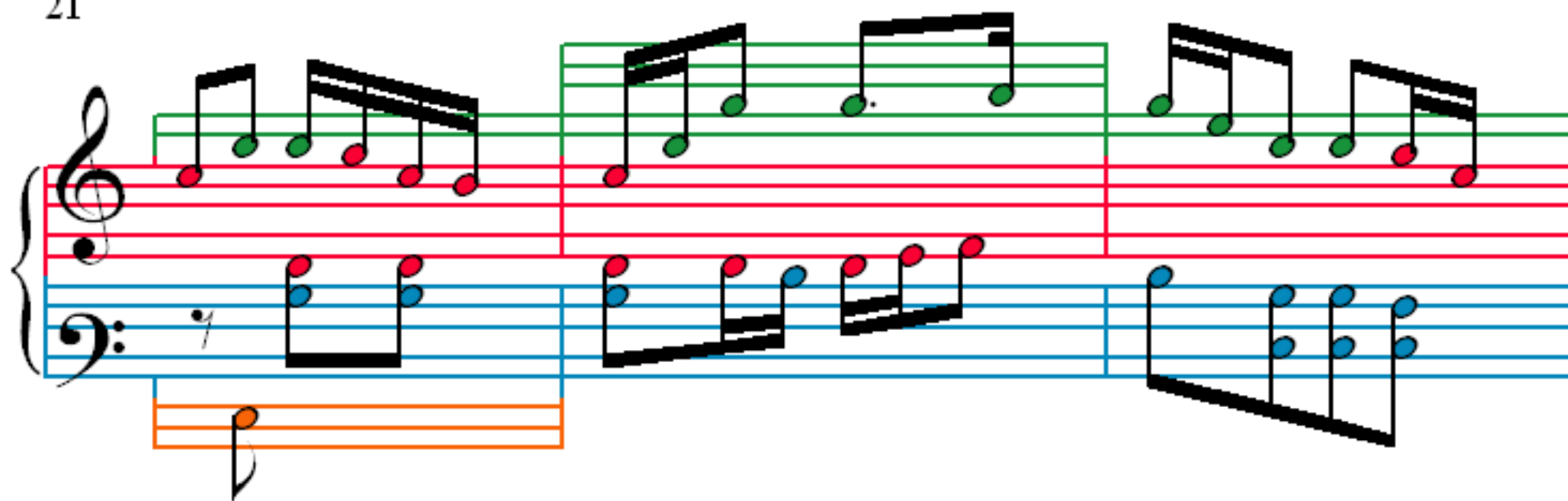
15



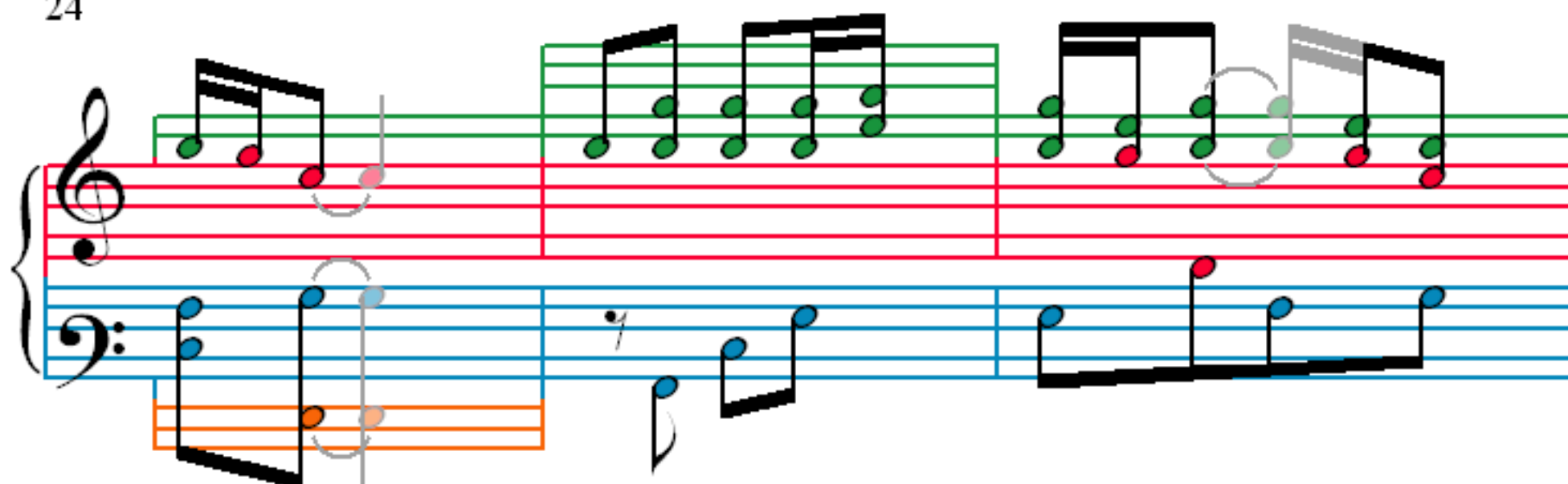
18



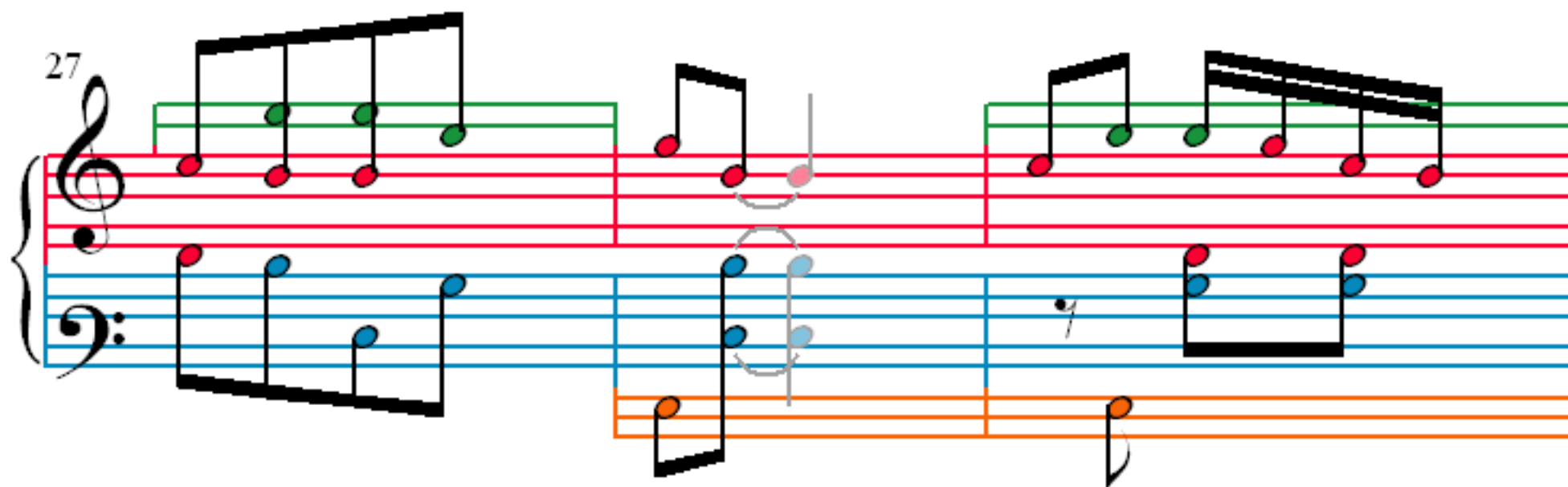
21



24



27



30

