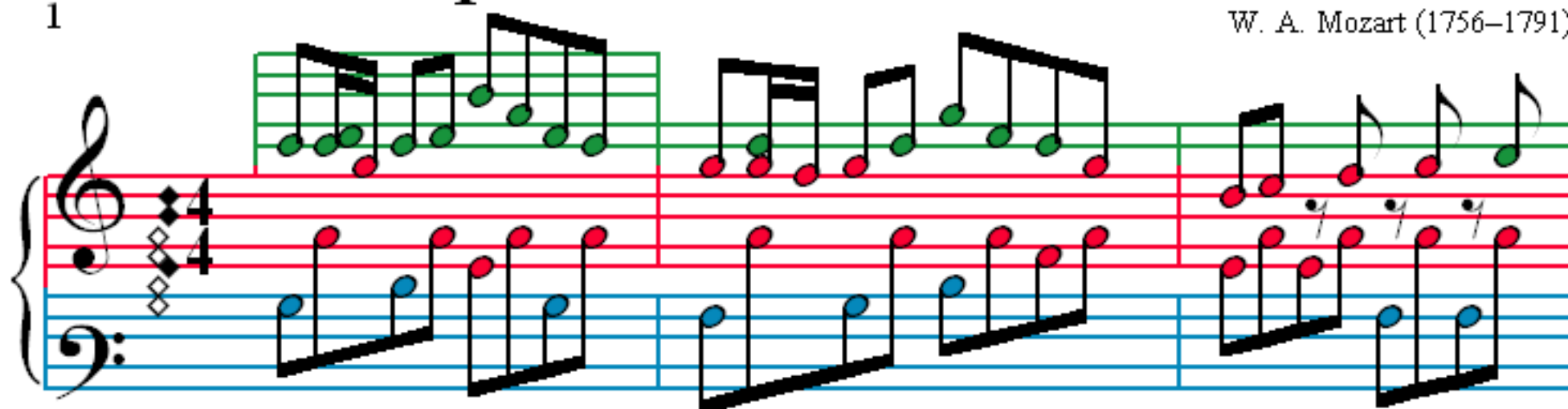


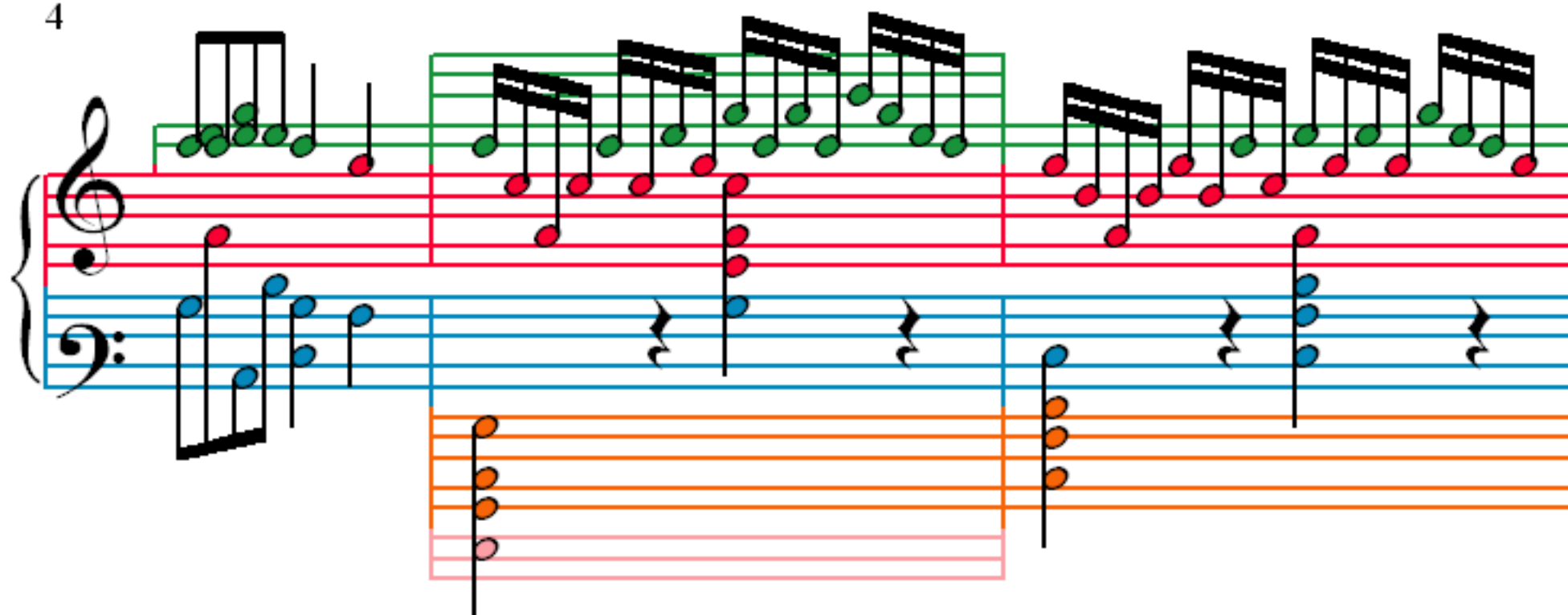
# Sonate Opus KV 331 - Variation 6

W. A. Mozart (1756–1791)

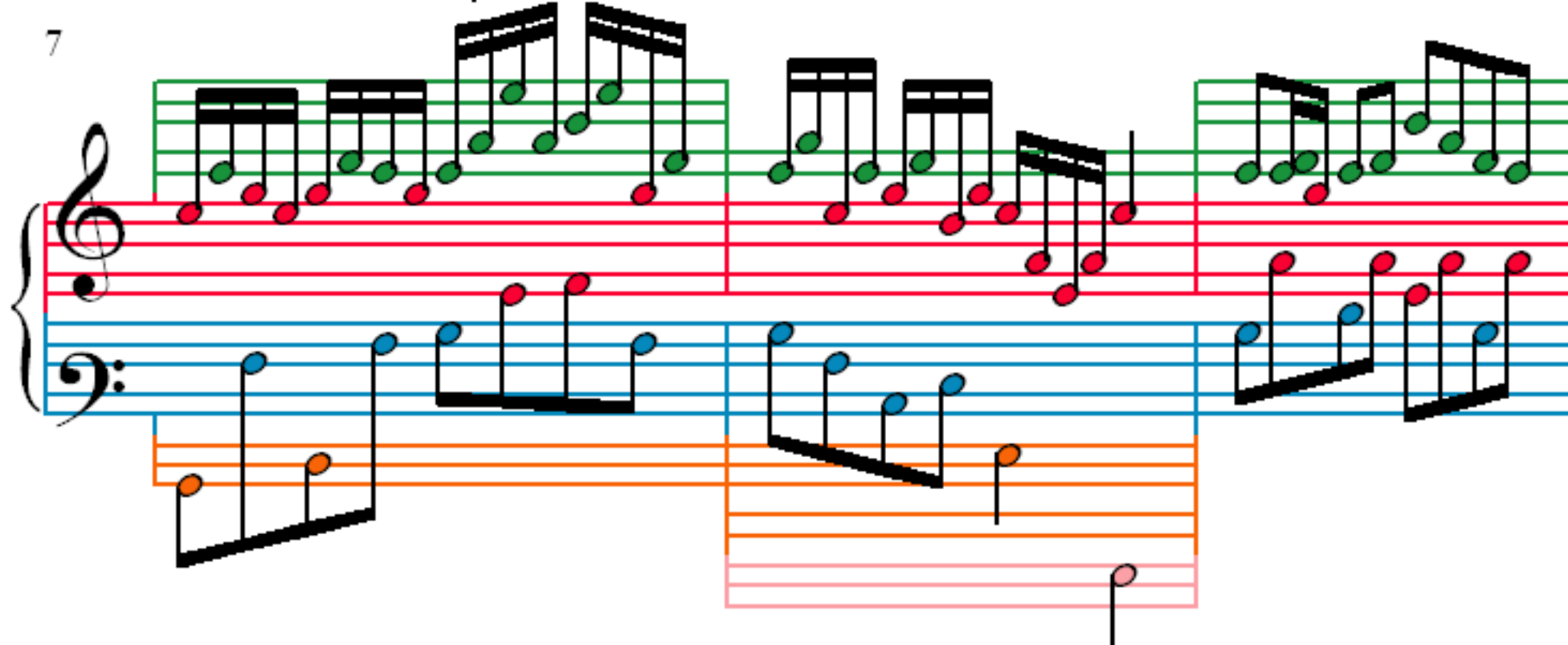
1



4



7



10



13

Measures 13-15: Treble staff has rapid sixteenth-note runs (green and red). Bass staff has blue notes with rests. An orange staff below shows a sequence of notes, and a pink staff shows a single note.

16

Measures 16-18: Treble staff continues with sixteenth-note runs. Bass staff has blue notes. An orange staff below shows a sequence of notes, and a pink staff shows a single note.

19

Measures 19-21: Treble staff has sixteenth-note runs. Bass staff has blue notes. An orange staff below shows a sequence of notes.

22

Measures 22-24: Treble staff has eighth-note runs. Bass staff has blue notes. An orange staff below shows a sequence of notes.

25

Measures 25 and 26 of the piece. The right hand (treble clef) features a continuous eighth-note melody with a green-to-red color gradient. The left hand (bass clef) plays a steady eighth-note accompaniment with a blue-to-orange color gradient. The notation is presented in two systems, each with a grand staff.

27

Measures 27 and 28. The right hand continues with eighth-note patterns, while the left hand maintains the eighth-note accompaniment. The color coding for notes remains consistent with the previous system.

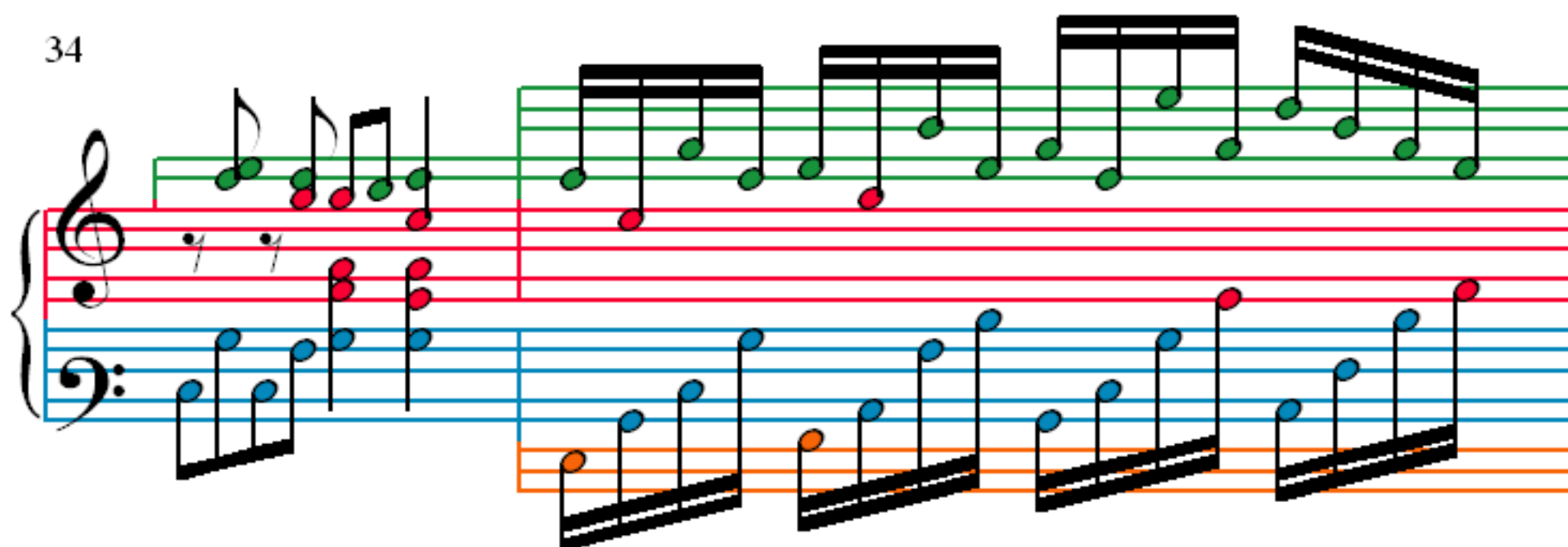
29

Measures 29 and 30. In measure 29, the right hand has a purple note. In measure 30, the right hand features a descending eighth-note scale. The left hand continues with the eighth-note accompaniment. The notation is presented in two systems, each with a grand staff.

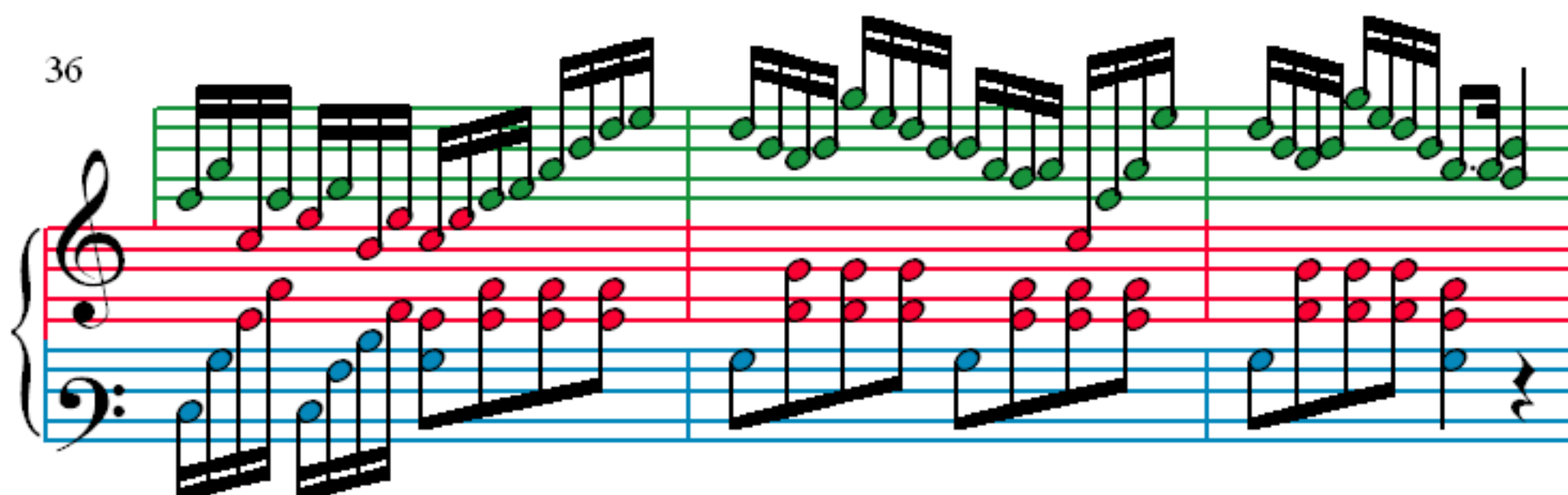
31

Measures 31 and 32. The right hand continues with eighth-note patterns, and the left hand maintains the eighth-note accompaniment. The notation is presented in two systems, each with a grand staff.

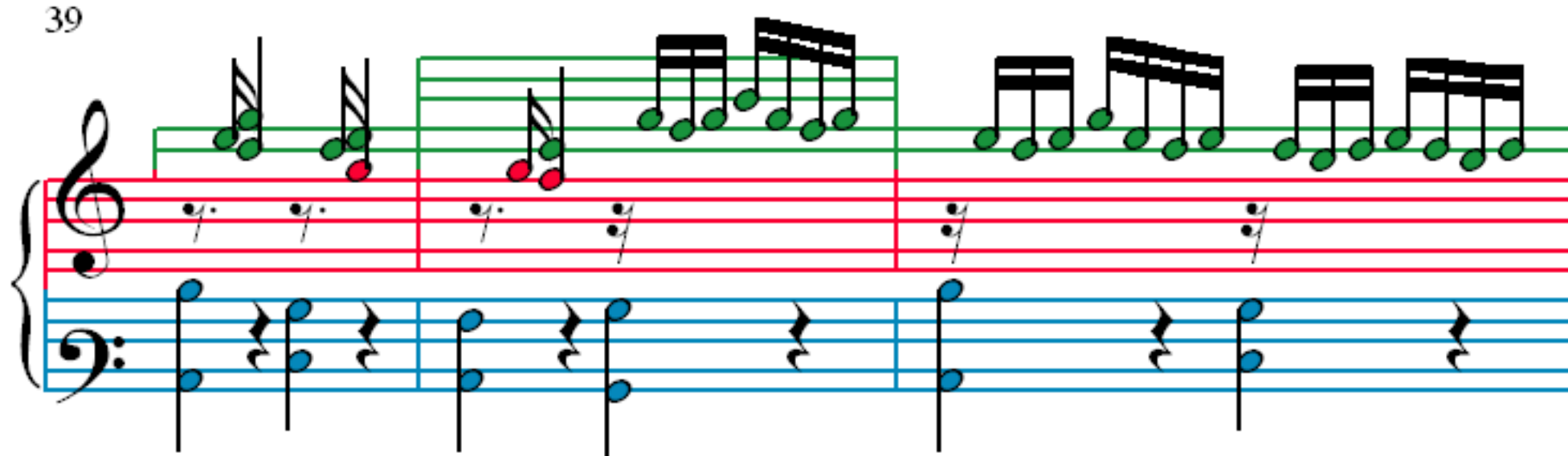
34



36



39



42

