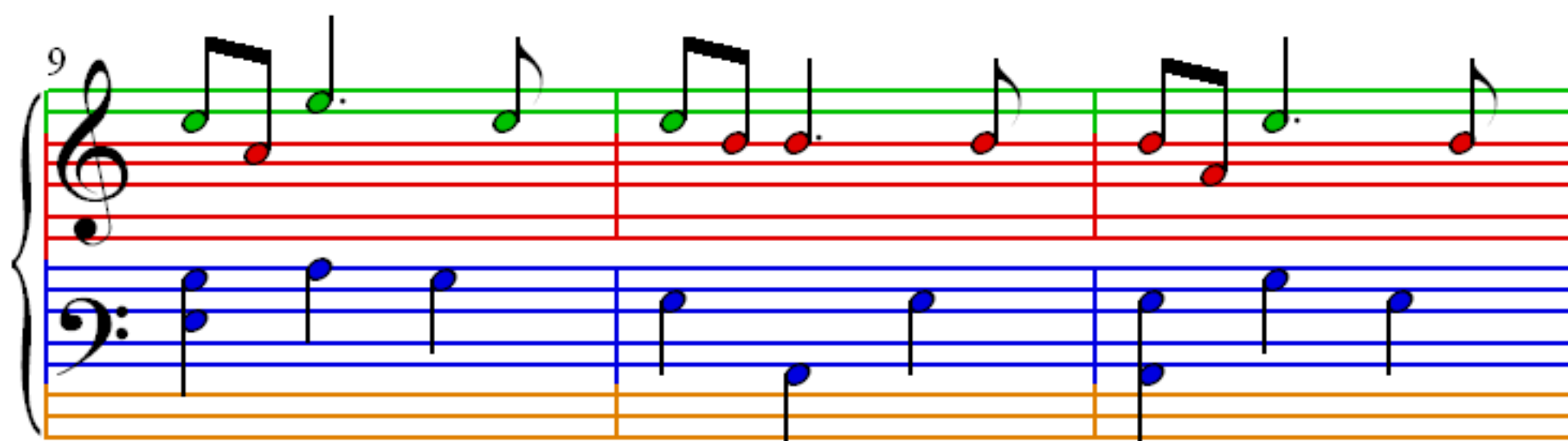
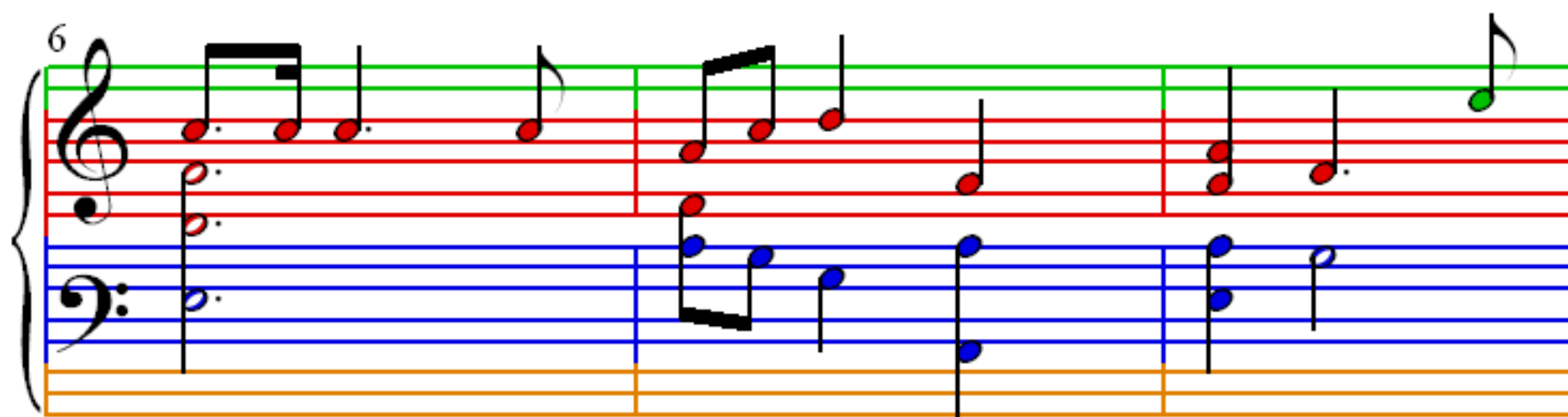
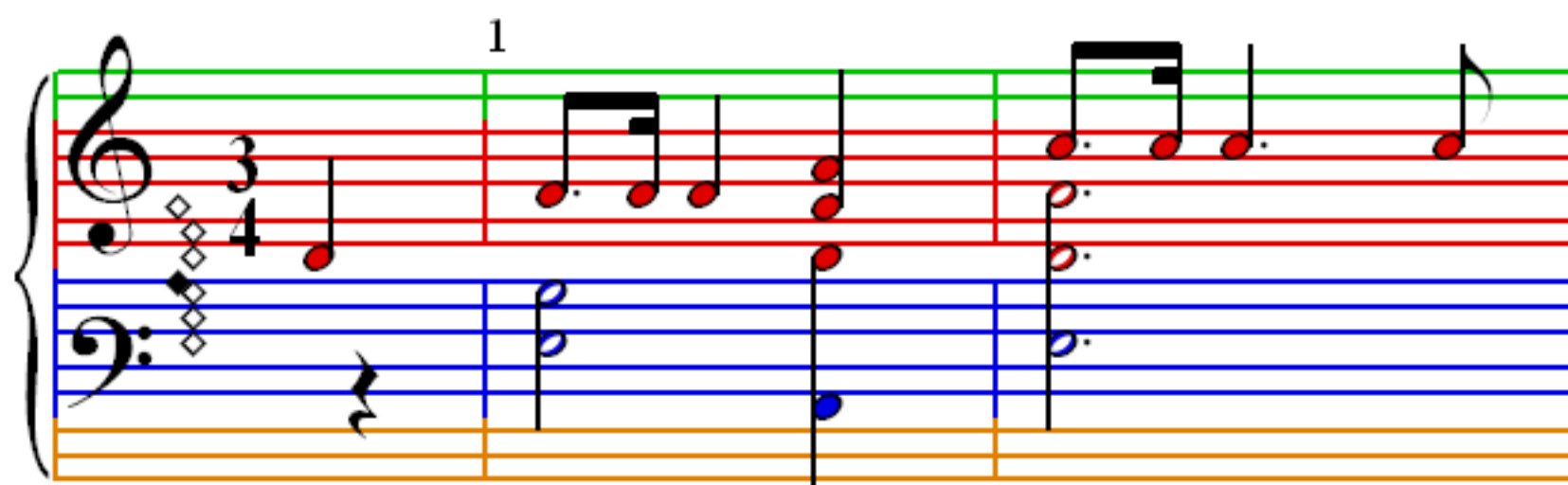
 = 100

Oh Christmas Tree



12

Handwritten musical notation for measures 12, 13, and 14. The system consists of a grand staff with a treble clef on the top staff and a bass clef on the bottom staff. The top staff has a green line at the top and a red line at the bottom. The bottom staff has a blue line at the top and a blue line at the bottom. The music is written in 4/4 time. Measure 12: Treble staff has a quarter note G4, an eighth note A4, and a quarter note B4. Bass staff has a half note C4. Measure 13: Treble staff has a quarter note C5, a quarter note B4, and a quarter note A4. Bass staff has a half note D4. Measure 14: Treble staff has a quarter note G4, a quarter note F4, and a quarter note E4. Bass staff has a half note C4.

15

Handwritten musical notation for measures 15, 16, and 17. The system consists of a grand staff with a treble clef on the top staff and a bass clef on the bottom staff. The top staff has a green line at the top and a red line at the bottom. The bottom staff has a blue line at the top and a blue line at the bottom. The music is written in 4/4 time. Measure 15: Treble staff has a quarter note G4, an eighth note A4, and a quarter note B4. Bass staff has a half note C4. Measure 16: Treble staff has a quarter note C5, a quarter note B4, and a quarter note A4. Bass staff has a half note D4. Measure 17: Treble staff has a quarter rest, a quarter note G4, and a quarter note F4. Bass staff has a half note C4.

18

Handwritten musical notation for measures 18, 19, and 20. The system consists of a grand staff with a treble clef on the top staff and a bass clef on the bottom staff. The top staff has a green line at the top and a red line at the bottom. The bottom staff has a blue line at the top and a blue line at the bottom. The music is written in 4/4 time. Measure 18: Treble staff has a quarter note G4, an eighth note A4, and a quarter note B4. Bass staff has a half note C4. Measure 19: Treble staff has a quarter note C5, a quarter note B4, and a quarter note A4. Bass staff has a half note D4. Measure 20: Treble staff has a quarter note G4, a quarter note F4, and a quarter note E4. Bass staff has a half note C4.

21

Handwritten musical notation for measures 21, 22, and 23. The system consists of a grand staff with a treble clef on the top staff and a bass clef on the bottom staff. The top staff has a green line at the top and a red line at the bottom. The bottom staff has a blue line at the top and a blue line at the bottom. The music is written in 4/4 time. Measure 21: Treble staff has a quarter note G4, an eighth note A4, and a quarter note B4. Bass staff has a half note C4. Measure 22: Treble staff has a quarter note C5, a quarter note B4, and a quarter note A4. Bass staff has a half note D4. Measure 23: Treble staff has a quarter note G4, a quarter note F4, and a quarter note E4. Bass staff has a half note C4.

